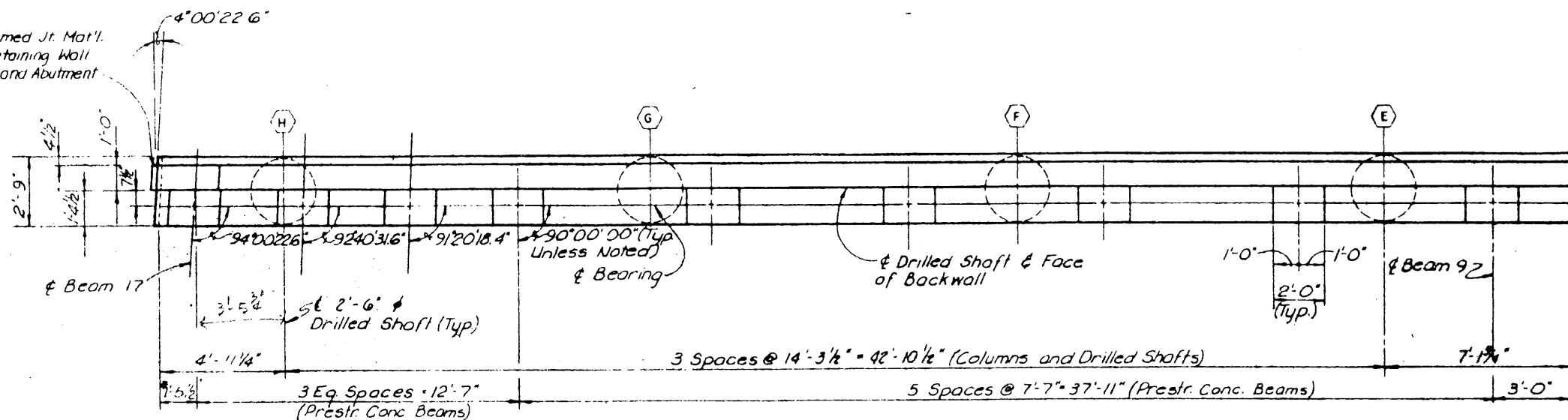


1/2" Preformed Jt. Mat'l.
between Retaining Wall
back face and Abutment

5' Tollway &
& Abutment



*End Dimensions are at
Top of Backwall.

PLAN
Scale: 3/8" = 1'-0"

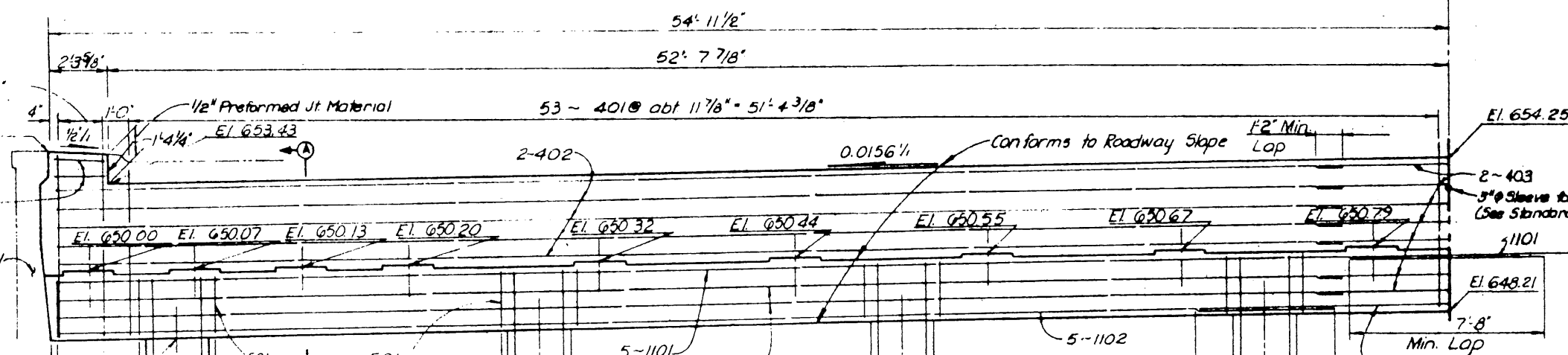
FOUNDATION NOTE:
The Contractor may construct retaining walls and place roadway embankment prior to construction of abutment columns and drilled shaft foundations. If the Contractor elects this option, the drilled shafts will be extended to the bottom of the abutment cap, and the column section shown on the plans will be deleted. The construction procedure for installation of the drilled shafts after embankment and retaining walls are in place shall be submitted to the Engineer for approval, prior to beginning construction operations. Payment for the additional drilled shafts lengths to replace columns will remain as the price bid for the column concrete and reinforcing steel shown in the Plan Quantities.

NOTES

1. See South Abutment Details 1 of 2 for Notes, Estimated Quantities and Details not shown.

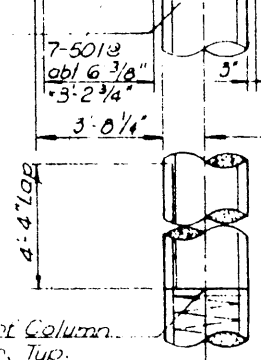
3-404 @ abt.
10 5/8" - 1'-9 1/4"
El. 654.88
2-405
for cast-in-place
retaining wall details
see Std. Drawg. No. 404-41

5' Tollway &
& Abutment

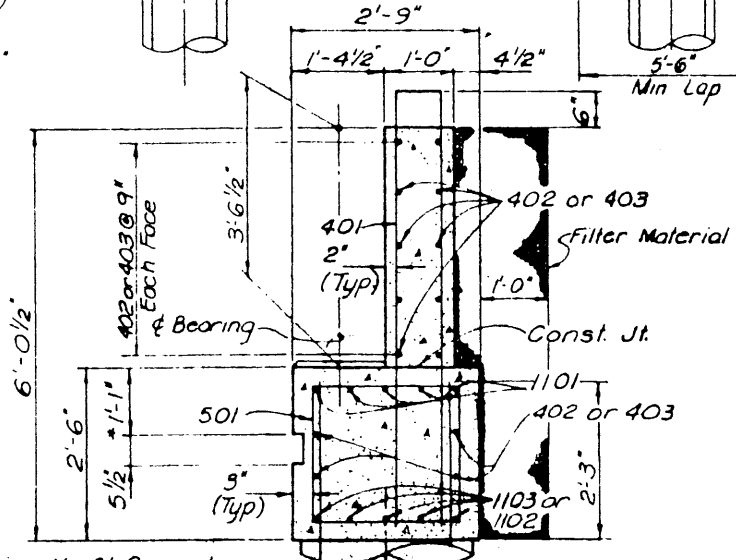


Top of Column
Elevation, Typ.

ELEVATION
Scale: 3/8" = 1'-0"



DRILLED SHAFTS (TYP.)



SECTION A-A
Scale: 3/4" = 1'-0"

COLUMN DESIGNATION	LOCATION	
	TOP	BOTTOM
A	647.43	632.76
B	647.65	632.98
C	647.86	633.19
D	648.10	633.43
E	648.10	633.43
F	647.86	633.19
G	647.65	632.98
H	647.43	632.76

5 #5 Spria with 6" pitch
and 1/2" flat turns top &
bottom.

8-#9 (lap into column included
in the price bid for drilled shafts)

* See Standard Drawing No. 21, Concrete
Riprap, for additional details.

NO.	REVISION	BY	DATE
TEXAS TURNPIKE AUTHORITY DALLAS NORTH TOLLWAY VERDE VALLEY LANE OVERPASS SOUTH ABUTMENT DETAILS			
Turner Collier & Braden Inc. <small>(Consulting Engineers)</small>			SECTION VI
DESIGNED BY BST	DATE 3-83	DRAWN BY FRW	DATE 3-83
CHECKED BY FRW	DATE 3-83	SCALE AS NOTED	
CONTRACT NO. DNT-114 SHEET S-5 OF S-82			