

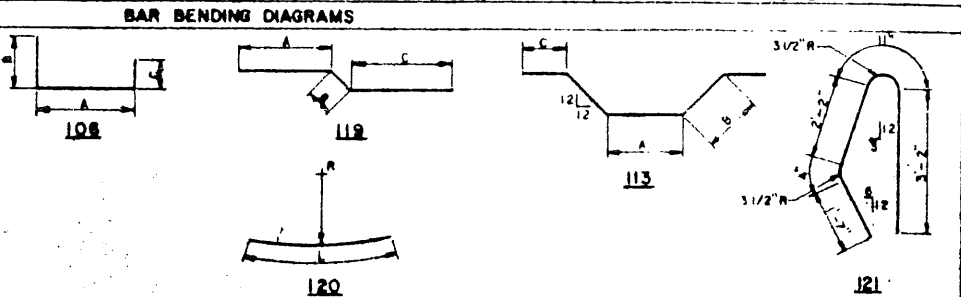
REINFORCEMENT		BAR		SCHEDULE - NORTH				WEIGHT
MARK	NO. REQ'D	LENGTH	TYPE	DIMENSIONS				
				A	B	C	D or R	
401	114	38'-0"	Str.					2894
402	108	38'-9"	Str.					2796
403	65	23'-0"	Str.					499
404	11	26'-0"	Str.					191
405	8	16'-0"	Str.					86
406	11	26'-0"	Str.					191
407	9	16'-0"	Str.					96
408	Omitted							
409	1 Ser.	4'-6" To	106	1'-6" To	1'-6"	1'-6"		23
	7	5'-0"		2'-6" To				
410	1 Ser.	5'-8" To		2'-8" To				53
	10	10'-2"		7'-2" To				
411	1 Ser.	11'-1" To		8'-1" To				45
	5	15'-9"		12'-9" To				
412	2	17'-10"		14'-10"				24
413	1 Ser.	4'-6" To		1'-6" To				28
	8	5'-11"		2'-11" To				
414	1 Ser.	6'-3" To		3'-3" To				66
	11	11'-5"		8'-5" To				
415	1 Ser.	12'-2" To		9'-2" To				47
	5	16'-2"		13'-2" To				
416	2	20'-6"	106	17'-6"	1'-6"	1'-6"		27
417	8	31'-6"	Str.					168
418	2 Ser.	2'-0" To						15
	6	5'-6" To	106					
419	2 Ser.	1'-6" To						12
	6	4'-6" To	106					
420	4	30'-0"						80
421	4	32'-0"						86
422	3 Ser.	17'-10" To						219
	33	2'-0" To	106					
423	3 Ser.	19'-7" To	Str.					243
	33	2'-6" To	106					
501	32	53'-5"	Str.					1783
502	36	55'-7"	Str.					2087
503	68	48'-2"	Str.					3416
504	68	7'-2"	113	5'-8"	0'-9"	0'-0"		508
505	136	3'-8"	Str.					520
506	235	26'-8"	Str.					6536
507	235	29'-10"	Str.					7312
508	136	32'-9"	Str.					4646
509	136	37'-0"	Str.					5248
510	15	34'-0"	Str.					532
511	15	38'-3"	Str.					598
512	1 Ser.	34'-0" To						718
	19	38'-3" To	106					
513	1 Ser.	38'-3" To						803
	19	42'-9" To	106					
514	1 Ser.	39'-0" To						523
	12	44'-6" To	106					
515	1 Ser.	43'-3" To						576
	12	48'-9" To	106					
516	4	46'-5"	Str.					194
517	4	50'-7"	Str.					211
518	16	34'-0"	Str.					567
519	16	38'-3"	Str.					638
520	1 Ser.	34'-3" To						805
	21	39'-3" To	106					
521	1 Ser.	38'-6" To						898
	21	43'-6" To	106					
522	1 Ser.	43'-0" To						229
	5	45'-0" To	106					
523	1 Ser.	47'-2" To						251
	5	49'-2" To	106					
524	4	49'-0"	Str.					204
525	4	53'-2"	Str.					222
526	10	26'-8"	Str.					278
527	10	29'-10"	Str.					311
528	1 Ser.	12'-8" To						82
	4	26'-8" To	106					
529	1 Ser.	19'-0" To						101
	4	29'-6" To	106					
530	1 Ser.	16'-0" To	Str.					186
	6	43'-6" To	106					

REINFORCEMENT		BAR		SCHEDULE - NORTH				WEIGHT
MARK	NO. REQ'D	LENGTH	TYPE	DIMENSIONS				
				A	B	C	D or R	
531	1 Ser.	20'-2" To	Str.					212
	6	47'-8" To	106					
532	263	4'-10"	119	2'-6"	0'-10"	1'-6"		1336
533	See Abutment Details							
534	See Abutment Details							
535	See Abutment Details							
536	See Abutment Details							
537	15	42'-0"	Str.					657
538	119	8'-2"	121					1014
539	1 Ser.	40'-6" To						261
	6	43'-0" To	106					
540	1 Ser.	44'-8" To						287
	6	47'-2" To	106					
541	69	4'-4"	106	1'-4"	1'-6"	1'-6"		312
601	1 Ser.	3'-3" To	Str.					971
	19	22'-9" To	106					
602	1 Ser.	5'-0" To	Str.					412
	20	22'-5" To	106					
701	249	10'-0"	Str.					5090

REINFORCEMENT		BAR		SCHEDULE - SOUTH				WEIGHT
MARK	NO. REQ'D	LENGTH	TYPE	DIMENSIONS				
				A	B	C	D or R	
401	108	39'-7"	Str.					2856
402	114	40'-4"	Str.					3071
403	65	23'-0"	Str.					499
404	8	16'-0"	Str.					86
405	8	26'-0"	Str.					199
406	12	27'-0"	Str.					216
407	10	14'-0"	Str.					94
408	2	18'-5"	106	15'-5"	1'-6"	1'-6"		25
409	1 Ser.	15'-6" To		12'-6" To				75
	9	9'-6"		6'-6" To				
410	1 Ser.	9'-2" To		6'-2" To				49
	10	5'-5"		2'-5" To				
411	1 Ser.	5'-1" To		2'-1" To				26
	8	4'-6"	106	1'-6" To	1'-6"	1'-6"		
412	Omitted							
413	1 Ser.	4'-6" To	106	1'-6" To	1'-6"	1'-6"		26
	8	5'-1"		2'-1" To				
414	1 Ser.	5'-3" To		2'-3" To				25
	6	7'-4"		4'-4" To				
415	1 Ser.	7'-10" To		4'-10" To				34
	5	12'-4"		9'-4" To				
416	2	14'-9"	106	11'-9"	1'-6"	1'-6"		20
417	2 Ser.	4'-0" To	Str.					9
	4	2'-6" To	106					
418	2 Ser.	4'-0" To						9
	4	2'-6" To	106					
419	8	36'-9"	Str.					196
420	4	28'-0"	Str.					75
421	4	32'-0"	Str.					86
422	3 Ser.	19'-11" To						242
	33	2'-0" To	106					
423	3 Ser.	14'-0" To	Str.					135
	24	2'-0" To	106					
501	36	58'-1"	Str.					2181
502	32	59'-10"	Str.					1997
503	68	48'-3"	Str.					3422
504	136	3'-8"	Str.					520
505	68	7'-2"	113	5'-8"	0'-9"	0'-0"		508
506	239	26'-6"	Str.					6606

REINFORCEMENT		BAR		SCHEDULE - SOUTH				WEIGHT
MARK	NO. REQ'D	LENGTH	TYPE	DIMENSIONS				
				A	B	C	D or R	
507	239	38'-3"	Str.					9535
508	1 Ser.	26'-8" To						125
	6	13'-4" To	106					
509	1 Ser.	38'-0" To						171
	6	16'-9" To	106					
510	9	26'-6"	Str.					249
511	9	38'-3"	Str.					359
512	1 Ser.	41'-6" To						210
	5	39'-0" To	106					
513	1 Ser.	36'-4" To						186
	5	34'-10" To	106					
514	4	43'-0"	Str.					179
515	4	38'-10"	Str.					162
516	1 Ser.	37'-0" To						192
	6	24'-6" To	106					
517	1 Ser.	32'-10" To						179
	6	24'-6" To	106					
518	1 Ser.	37'-0" To						485
	13	34'-6" To	106					
519	1 Ser.	32'-10" To						428
	13	30'-4" To	106					
520	16	34'-6"	Str.					526
521	16	30'-2"	Str.					503
522	158	32'-11"	Str.					5424
523	158	28'-8"	Str.					4724
524	16	33'-5"	Str.					558
525	16	29'-2"	Str.					487
526	1 Ser.	33'-9" To						737
	20	36'-11" To	106					
527	1 Ser.	29'-6" To						648
	20	32'-8" To	106					
528	1 Ser.	43'-7" To						658
	18	47'-10" To	106					
529	1 Ser.	39'-4" To						781
	18	43'-11" To	106					
530	4	46'-2"	Str.					193
531	4	42'-0"	Str.					175
532	272	4'-10"	119	2'-6"	0'-10"	1'-6"		1371
533	See Abutment Details							
534	See Abutment Details							
535	See Abutment Details							
536	See Abutment Details							
537	15	43'-0"	Str.					673
538	126	8'-2"	121					1073
539	79	4'-4"	106	1'-4"	1'-6"	1'-6"		357
601	1 Ser.	2'-0" To	Str.					384
	22	21'-3" To	106					
602	1 Ser.	1'-0" To	Str.					264
	16	21'-0" To	106					
701	249	10'-0"	Str.					5090

SUMMARY NORTH SLAB		SUMMARY SOUTH SLAB	
BAR SIZE	TOTAL	BAR SIZE	TOTAL
#4	8387	#4	8493
#5	42062	#5	46832
#6	783	#6	648
#7	5090	#7	5090
Total	59324	Total	61063



ESTIMATED QUANTITY SUMMARY - NORTH			
ITEM NO.	DESCRIPTION	UNIT	QUANTITY
425	Prestr. Conc. Beams (ASHTO Type III)	L.F.	894.27
422	Reinforced Concrete Slab	S.F.	7505
442	Struct. Steel (HYC)	Lb.	2751
442	Struct. Steel (HYC) (Armor Jt.)	Lb.	7643
#430	Reinforcing Steel	Lb.	59324
#421	Class "C" Concrete (Slab)	C.Y.	2344
450	Type C4 Railing	L.F.	107.8

ESTIMATED QUANTITY SUMMARY - SOUTH			
ITEM NO.	DESCRIPTION	UNIT	QUANTITY
425	Prestr. Conc. Beams (ASHTO Type III)	L.F.	923.61
422	Reinforced Concrete Slab	S.F.	7774