

**GENERAL NOTES:**

The approach slab shall be finished as required for the structure or as directed by the Engineer.

Reinforcing steel shall conform to ASTM designation A-615, Grade 60. Splices shall be a minimum of 20 times the nominal diameter of the bar.

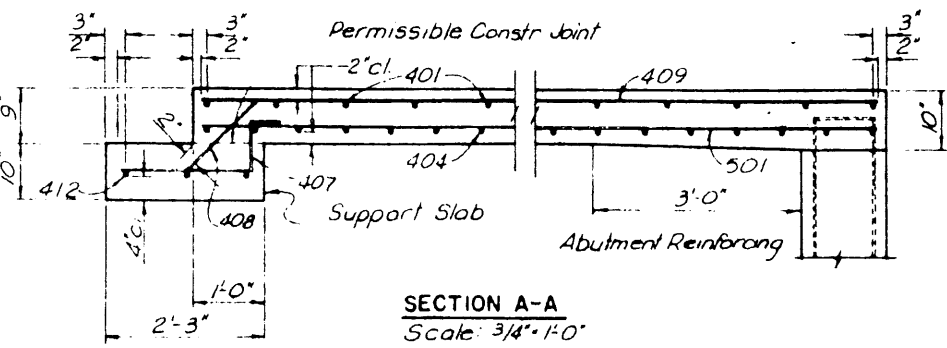
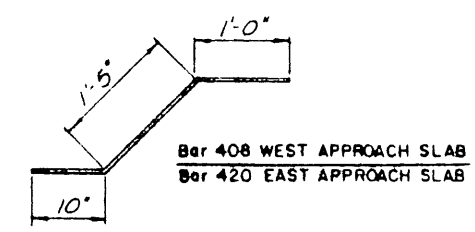
The chair used to support the bar mat shall be of sufficient structural quality and number to hold the mat within the placement height tolerances, and shall be of a type approved by the Engineer.

Payment for the variable thickness approach slab and support slab, shall be made at the unit price bid for "Concrete Pavement (Water Cement Ratio)(Approach Slab)(9)". Joint seals, reinforcing steel, and any excavation and backfill required for the approach slab and support slab shall be considered subsidiary to the bid item.

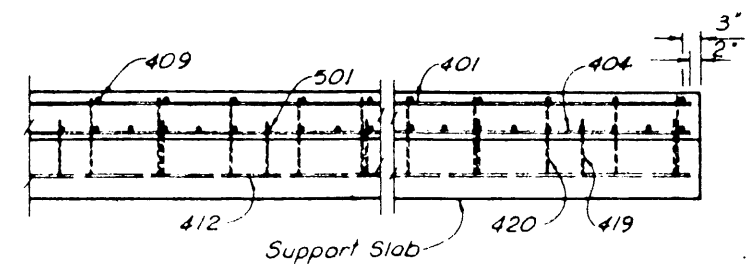
For roadway pavement details, see Standard Drawings No 12 and 15.

**WEST APPROACH SLAB**  
Scale: 1/4" = 1'-0"

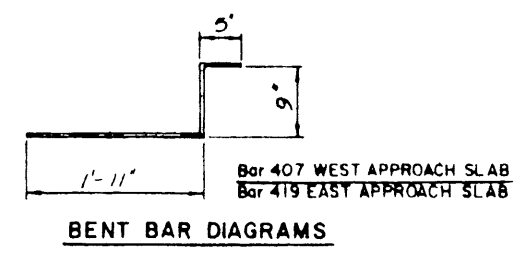
**EAST APPROACH SLAB**  
Scale: 1/4" = 1'-0"



**SECTION A-A**  
Scale: 3/4" = 1'-0"  
West Approach Slab Shown;  
East Approach Slab Similar



**SECTION B-B**  
Scale: 3/4" = 1'-0"  
West Approach Slab Shown;  
East Approach Slab Similar



**BENT BAR DIAGRAMS**

NO.	REVISION	BY	DATE
TEXAS TURNPIKE AUTHORITY DALLAS NORTH TOLLWAY			
ARAPAHO ROAD UNDERPASS APPROACH SLAB DETAILS			
Turner Collie & Braden Inc. <small>(Consulting Engineers)</small>			SECTION VI
DESIGNED BY	BST	DATE	6-83
DRAWN BY	JRA	DATE	6-83
CHECKED BY	JRA	DATE	6-83
SCALE	AS NOTED		
CONTRACT NO. DNT-114 SHEET S-54 OF S-82			