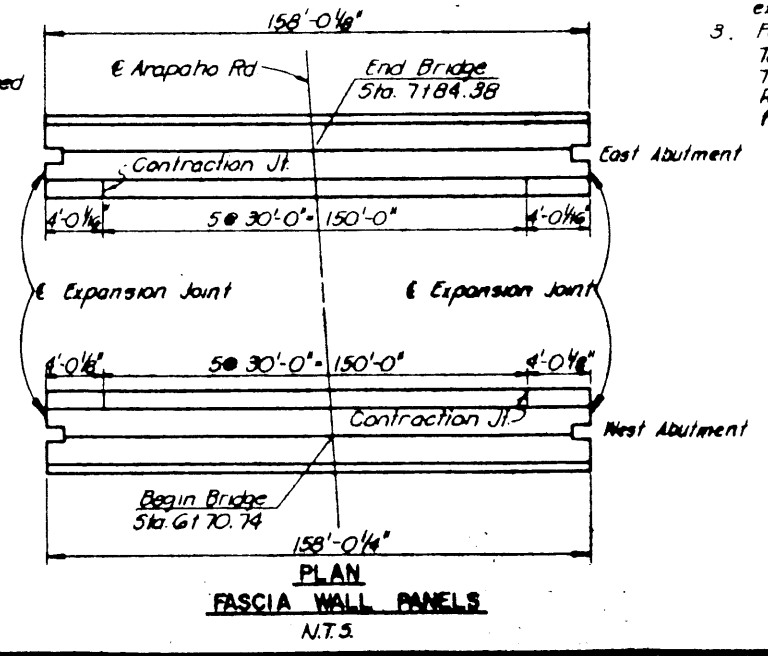
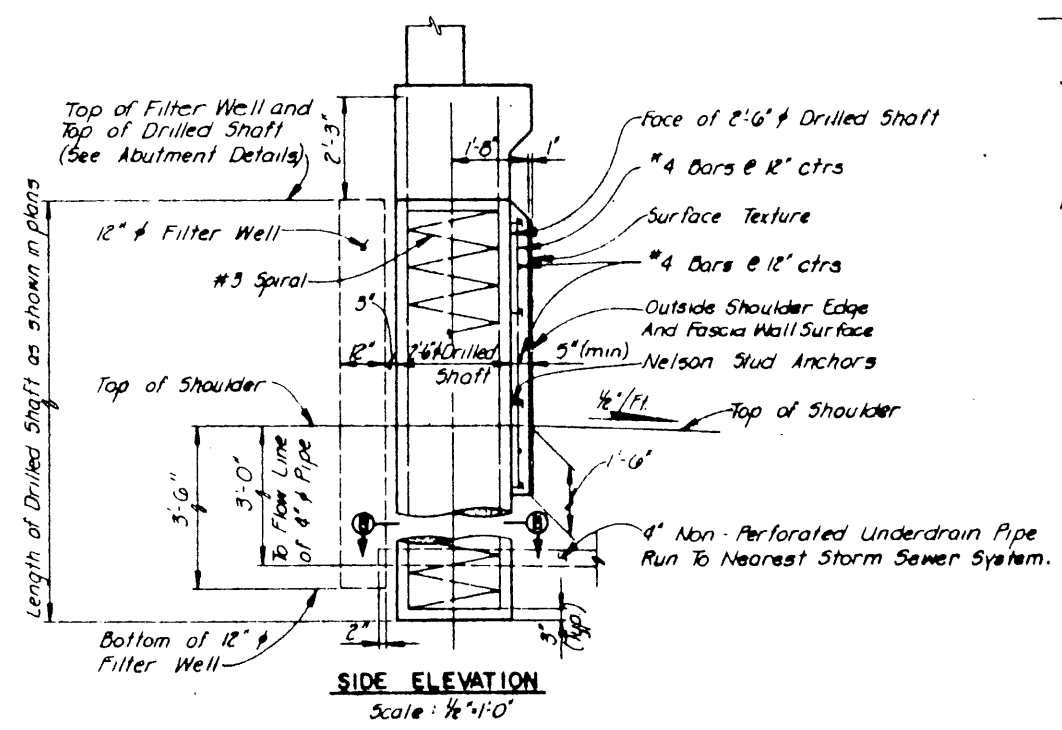


NOTE:  
Forming details shown are diagrammatic only, Contractor shall select type of form ties, etc., subject to approval of Engineer.

ESTIMATED QUANTITY SUMMARY			
ITEM NO.	DESCRIPTION	UNIT	QUANTITY
#421	Class C Concrete (Fascia Wall)	CY	0.10
#430	Reinforcing Steel (Fascia Wall)	Lb	2.67
556	Pipe Underdrains (4in - Non Perf.)	L.F	105

\* For Contractors' Information only.  
▲ Quantities For 1'-0" Height Fascia Wall Per Shaft Space.



General Notes:  
1. All concrete for drilled shafts and concrete fascia walls shall be Class "C".  
2. All reinforcing steel shall be ASTM A-615, Grade 60, except spiral bars.  
3. For details and dimensions of Surface Texture, see Standard Dwg. No. 41. The Contractor shall develop a Rustication Layout for each Abutment for Approval by the Engineer.

NO.	REVISION	BY	DATE
TEXAS TURNPIKE AUTHORITY			
DALLAS NORTH TOLLWAY			
ARAPAHO ROAD UNDERPASS			
DRILLED SHAFT AND FASCIA WALL DETAILS			
Turner Collier & Braden Inc. Consulting Engineers			SECTION VII
DRW	DATE 6-83	PREPARED BY FRW	DATE 6-83
CHECKED JRA	DATE 6-83	SCALE AS NOTED	
CONTRACT NO. DNT-114 SHEET S-55 OF S-82			