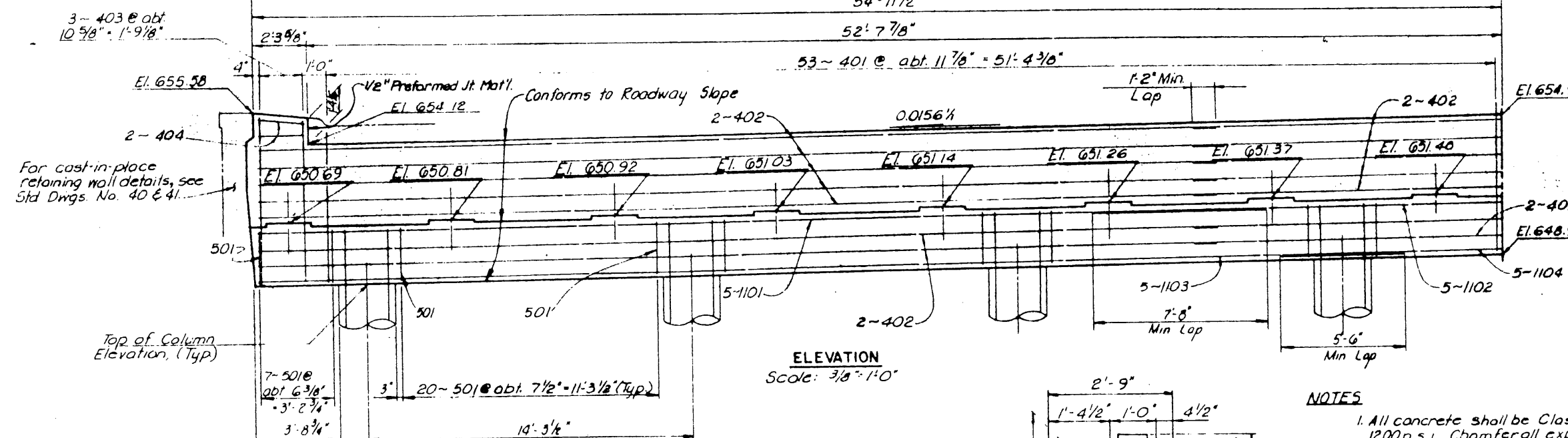
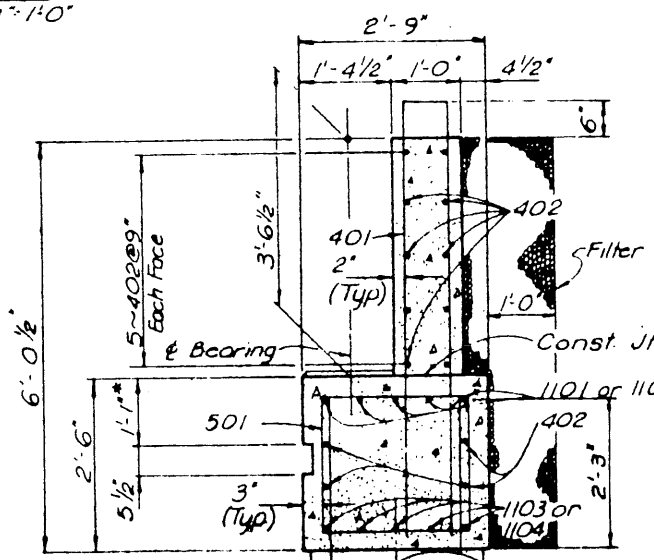
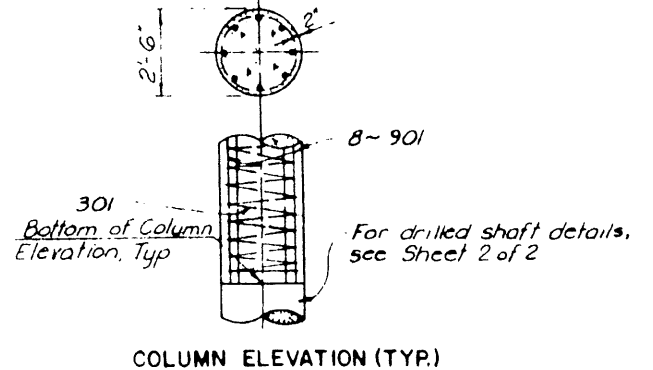


PLAN
Scale: 3/8" = 1'-0"



ELEVATION
Scale: 3/8" = 1'-0"



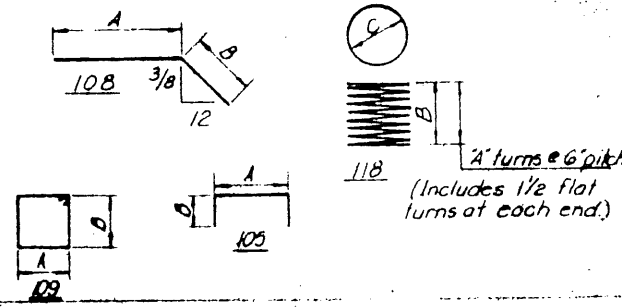
NOTES

- All concrete shall be Class "C" design fc = 1200 p.s.i. Chamfer all exposed corners 3/4" unless otherwise noted.
- All reinforcing steel shall be ASTM A615, Grade 60, fy = 60,000 p.s.i.
- Dimensions relating to reinforcing steel are to outside dimension of bar, with radii shown to be inside of bar.
- See General Plan and Elevation drawing for expansion or fixed end condition of spans.
- Average calculated drilled shaft load = 85 Tons/Shaft.
- See South Abutment Details, Sheet 2 of 2, for Foundation Note.

* See Standard Drawing No. 21, Concrete Riprap, for additional details.

REINFORCEMENT		BAR		SCHEDULE				WEIGHT
MARK	NO.	LENGTH	TYPE	DIMENSIONS			D or R	
401	121	19'-4"	105	0'-8"	6'-4"			1078
402	42	42'-7"	51r					1195
403	6	14'-4"	105	0'-8"	6'-10"			57
404	8	2'-0"	51r					11
							Total	2341
501	174	9'-4"	109	2'-3"	2'-0"			1694
1101	10	44'-5"	51r					2360
1102	5	51'-8"	108	18'-1 1/2"	35'-6 1/2"			1373
1103	10	50'-6"	51r					2683
1104	5	35'-2"	108	9'-11"	25'-2"			934
							Total	7250
301	9	202'-11"	118	31	13'-7"	2'-1/4"		687
							Total	4080
801	72	16'-8"	51r					16152
							Total	16152

BAR BENDING DIAGRAMS



ESTIMATED QUANTITY SUMMARY

ITEM NO.	DESCRIPTION	UNIT	QUANTITY
416	Drilled Shaft (30" dia)	L.F.	81
421	Class "C" Concrete (Abutment)	C.Y.	72.2
440	Reinforcing Steel	Lb.	16152
526	Filter Material (Type D)	C.Y.	34

Note: Armor Jt. at Abutment is included in Slab Details - Span 3 Drawing, Item No. 442 Quantity

TEXAS TURNPIKE AUTHORITY
DALLAS NORTH TOLLWAY
 VERDE VALLEY LANE OVERPASS
 NORTH ABUTMENT DETAILS

Turner Collier & Braden Inc.
 Consulting Engineers

SECTION VI

DATE: 3-83
 DRAWN: FRW
 CHECKED: FRW
 SCALE: AS NOTED

CONTRACT NO. DNT-114 SHEET S-6 OF S-82