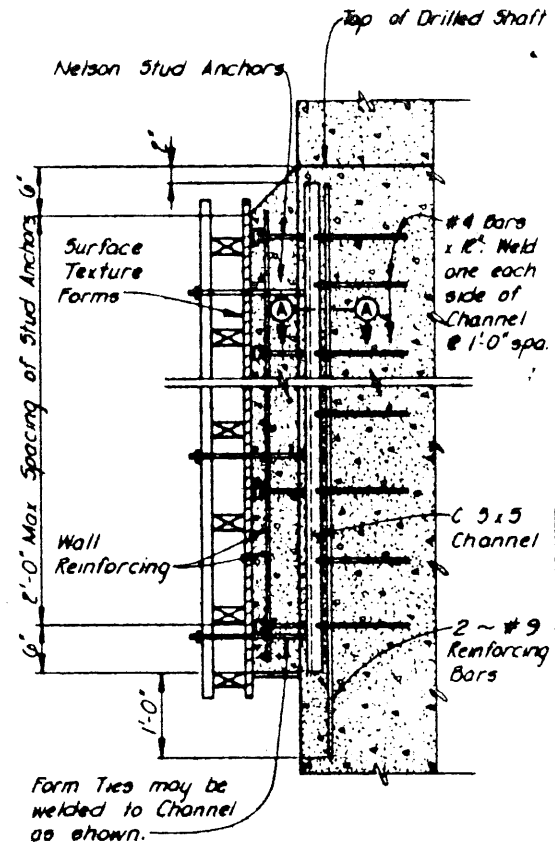
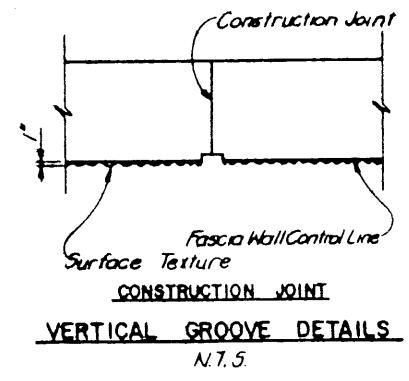
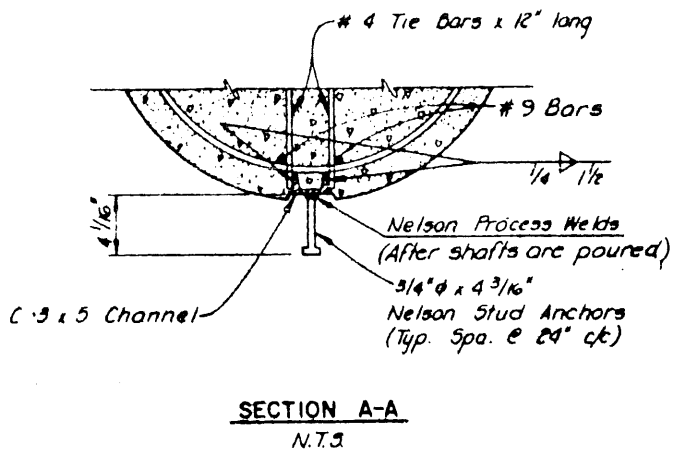


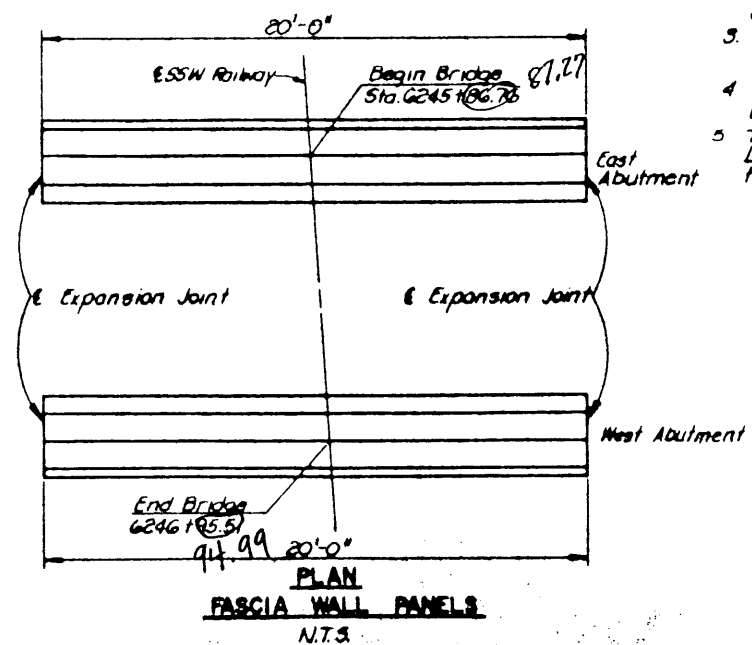
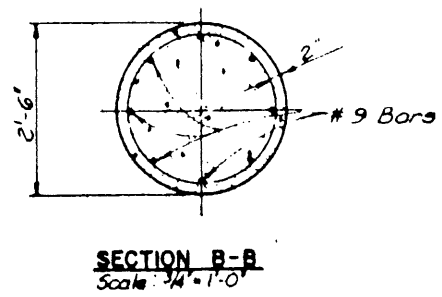
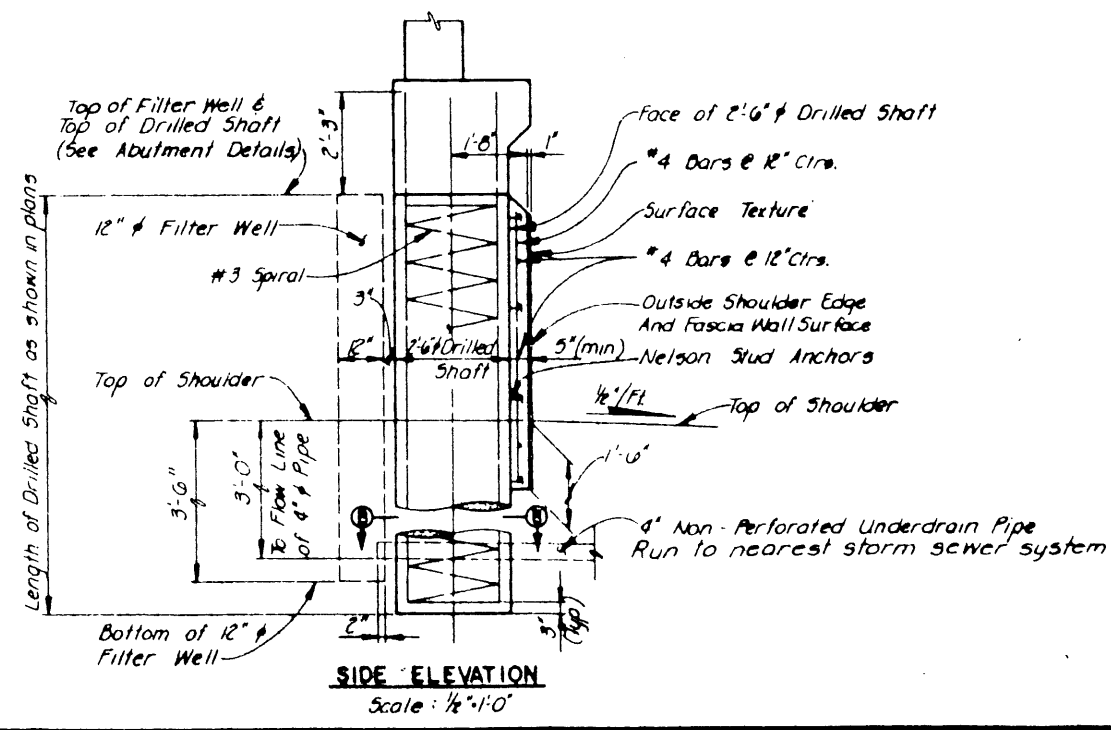
*Can be varied to accommodate drilled shaft vertical alignment construction tolerances, as per Specifications.
PLAN
 Scale: 1/4" = 1'-0"



NOTE:
 Forming details shown are diagrammatic only, Contractor shall select type of form ties, etc., subject to approval of Engineer.

| ESTIMATED QUANTITY SUMMARY* | | | |
|-----------------------------|---------------------------------|------|----------|
| ITEM NO. | DESCRIPTION | UNIT | QUANTITY |
| # 421 | Class C Concrete (Fascia Wall) | CY | 0.10 |
| # 430 | Reinforcing Steel (Fascia Wall) | Lb | 2.67 |
| 556 | Pipe Underdrains (4in Non-Perf) | L.F. | 7.2 |
| | | | |
| | | | |
| | | | |

* For Contractors' Information only.
 * Quantities For 1'-0" Height Fascia Wall For Shaft Space.



- General Notes:**
- All concrete for drilled shafts and concrete fascia walls shall be Class C.
 - All reinforcing steel shall be ASTM A-615, Grade 60 except spiral bars.
 - For details and dimensions of Surface Texture, see Standard Dwg. No. 41
 - For Fascia Wall End Detail, See Detail 1, Abutment Details Sheet No.
 - The Contractor shall develop a Rustication Layout for each Abutment for approval by the Engineer.

| | | | |
|---|----------|------|-------------|
| NO. | REVISION | BY | DATE |
| TEXAS TURNPIKE AUTHORITY DALLAS NORTH TOLLWAY | | | |
| SSW RAILWAY UNDERPASS DRILLED SHAFT AND FASCIA WALL DETAILS | | | |
| Turner Collier & Braden Inc. Consulting Engineers | | | SECTION VII |
| DESIGNED | DRD | DATE | 6-83 |
| CHECKED | JRA | DATE | 6-83 |
| ENGINEER | FRW | DATE | 6-83 |
| SCALE | AS NOTED | | |
| CONTRACT NO. DNT-114 SHEET S-63 OF S-82 | | | |