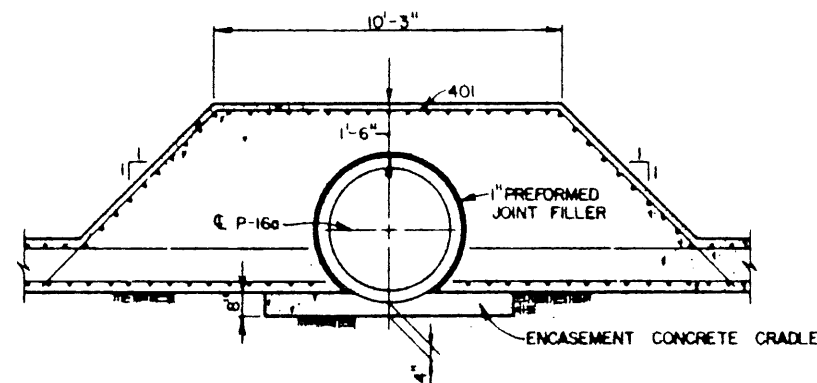
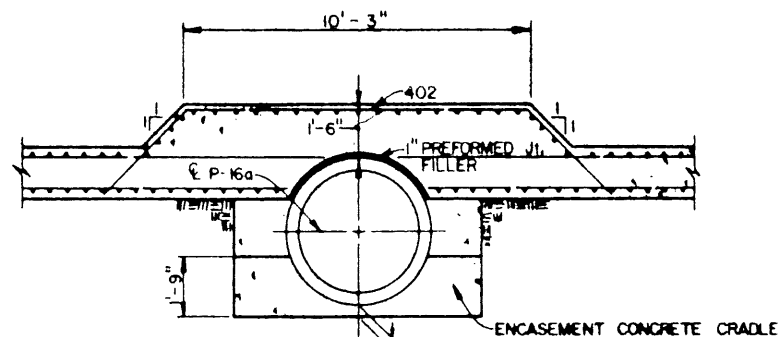


SCALE = $\frac{1"}{30' - 0"} = \text{PLAN}$

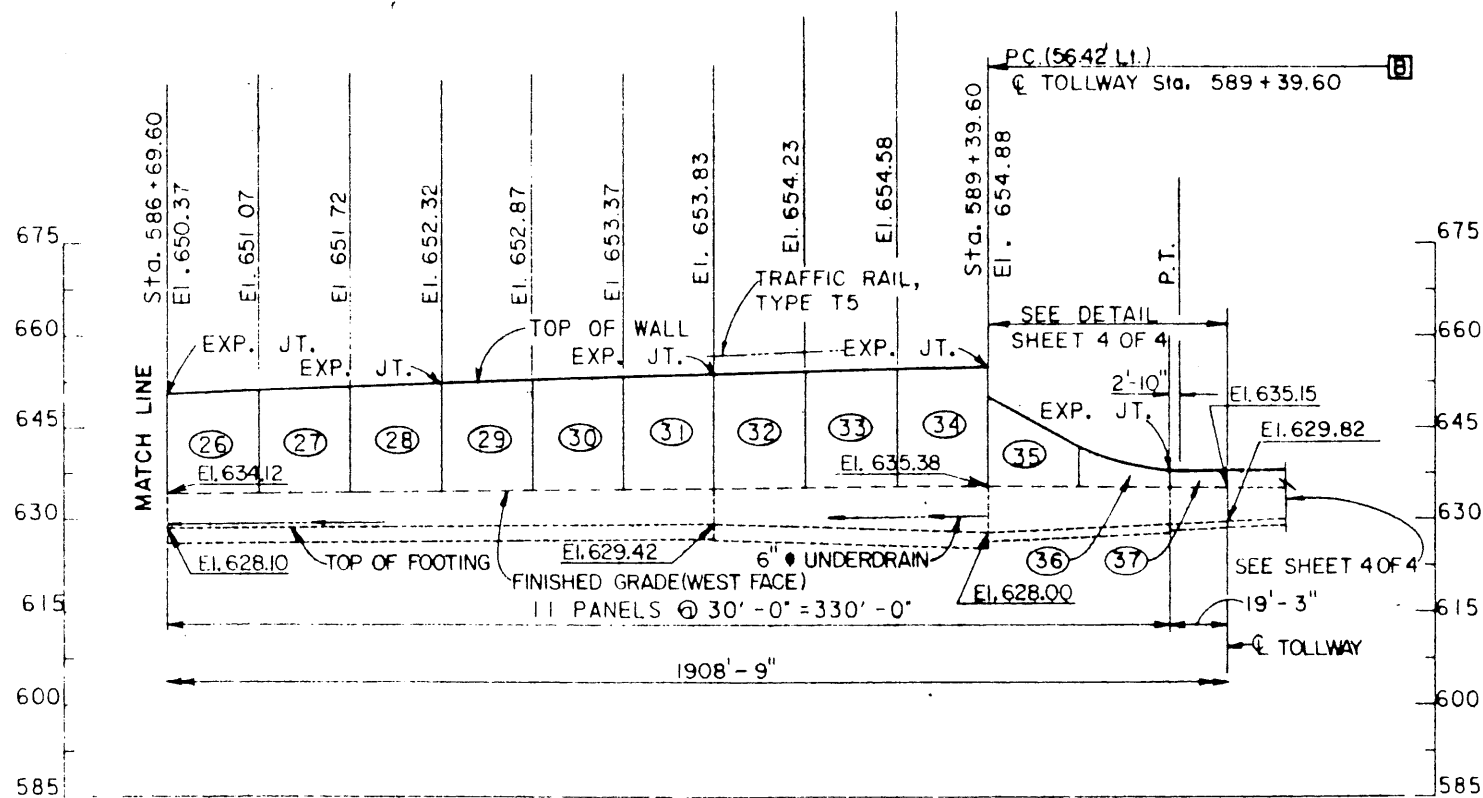


DETAIL 1
SCALE = $\frac{3}{8}" = 1' - 0"$

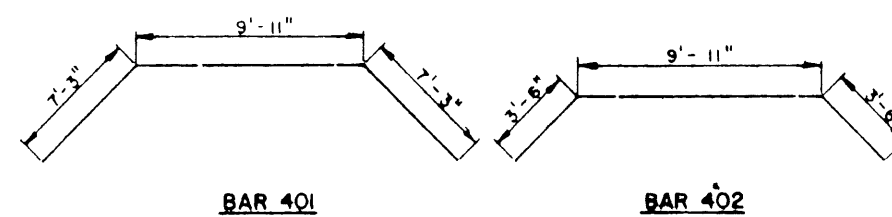


DETAIL 2
SCALE = $\frac{3}{8}" = 1' - 0"$

- GENERAL NOTES:
- FOR RETAINING WALL DESIGN AND DETAILS, SEE STANDARD DRAWING NUMBERS 40 AND 41
 - FOR CONCRETE RIPRAP DETAILS, SEE STANDARD DRAWING NUMBER 21.
 - FOR ABUTMENT DETAILS, SEE SHEET NUMBER
 - EXPANSION JOINTS ARE NOTED. ALL OTHER JOINTS SHALL BE CONTRACTION.
 - DENOTES PANEL NUMBER.
 - DENOTES MATCH POINT
 - FOR CONCRETE TRAFFIC RAIL, TYPE T5, SEE STANDARD DRAWING NUMBER 30.



ELEVATION
(LOOKING WEST)
SCALE = $\frac{1"}{30' - 0"} = \text{HORIZ.}$
 $\frac{1"}{15' - 0"} = \text{VERT.}$



NO.	REVISION	BY	DATE
TEXAS TURNPIKE AUTHORITY			
DALLAS NORTH TOLLWAY			
VERDE VALLEY LANE ~ SOUTH RETAINING WALLS			
PLAN AND ELEVATION			
TurnerCollieBraden Inc. <small>Consulting Engineers</small>			SECTION VI
DRAWN RGD	DATE 8-83	DESIGNED TJR	DATE 7-83
CHECKED TJR	DATE 8-83	SCALE AS NOTED	
CONTRACT NO. DNT-114 SHEET S-65 OF S-82			