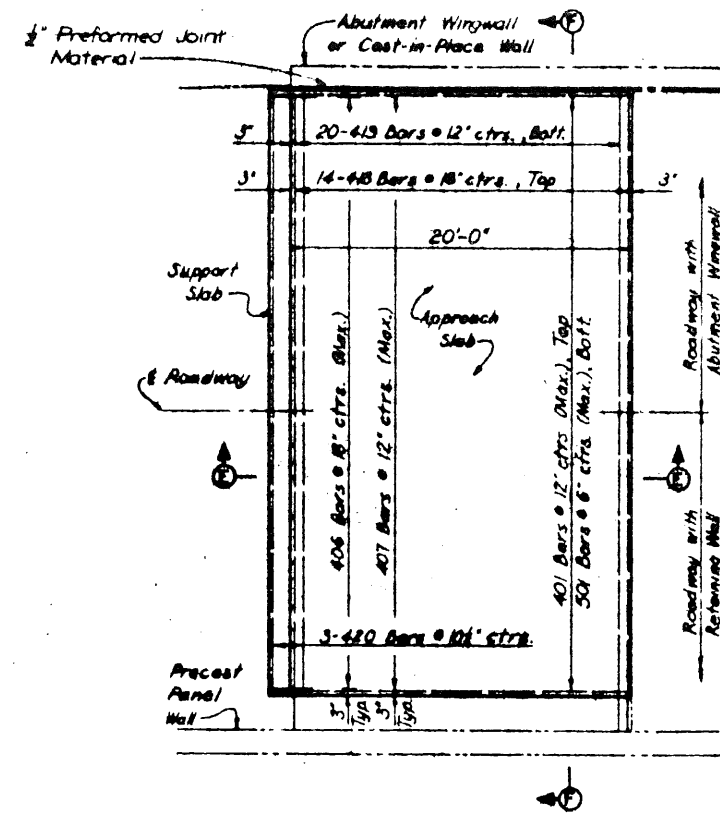


Note Curb type and curb elimination transitions shall be accomplished across the length of the Approach Slab. See Roadway Plan and Profile sheets for locations.



GENERAL NOTES:

The approach slab shall have the same transverse crown throughout its length as the structure which it adjoins.

The approach slab shall be finished as required for the structure or as directed by the Engineer.

Reinforcing steel shall conform to ASTM Designation A-615, Grade 60. Splices shall be a minimum of 20 times the nominal diameter of the bar.

The chairs used to support the bar mat shall be of sufficient structural quality and number to hold the mat within the placement height tolerances, and shall be of a type approved by the Engineer.

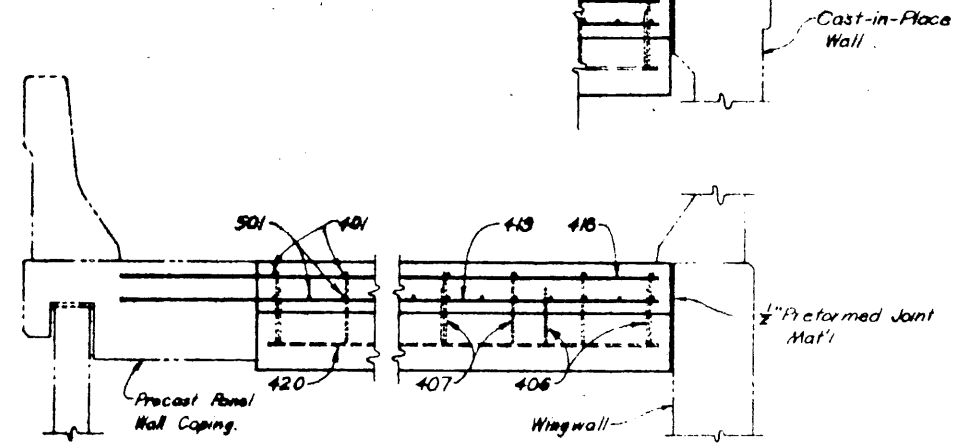
For details of Type A and Type M curbs, see Standard Drawing No. 11.

Payment for the approach slab, support slab, and curb shall be made of the unit price bid for "Concrete Pavement (Water Cement Ratio) (Approach Slab) (9)".

Joint seals, reinforcing steel, and any excavation required for the approach slab and support slab shall be considered subsidiary to the bid item.

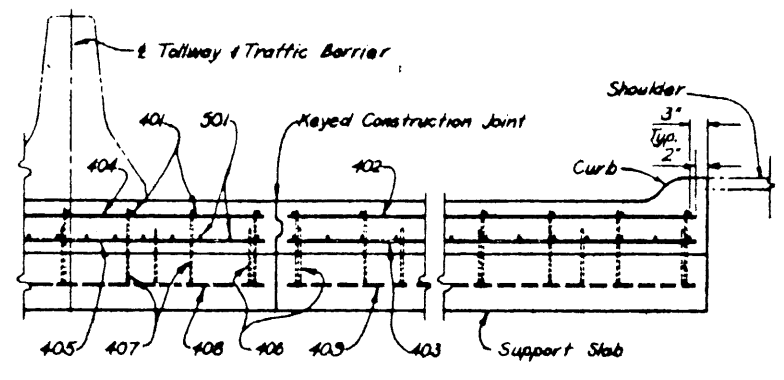
For roadway pavement details, see Standard Drawings No. 12 and 15.

INTERCHANGE APPROACH SLAB



MAINLINE APPROACH SLAB

SKEWS THRU 15°



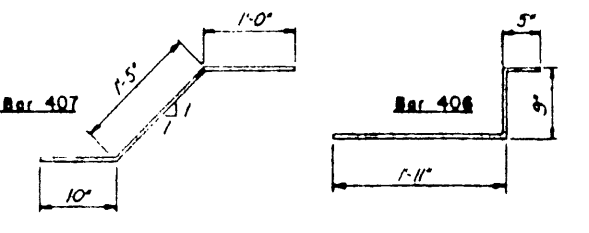
NOTE: Section D-D is similar to Section B-B.

REINFORCING STEEL NOTES:

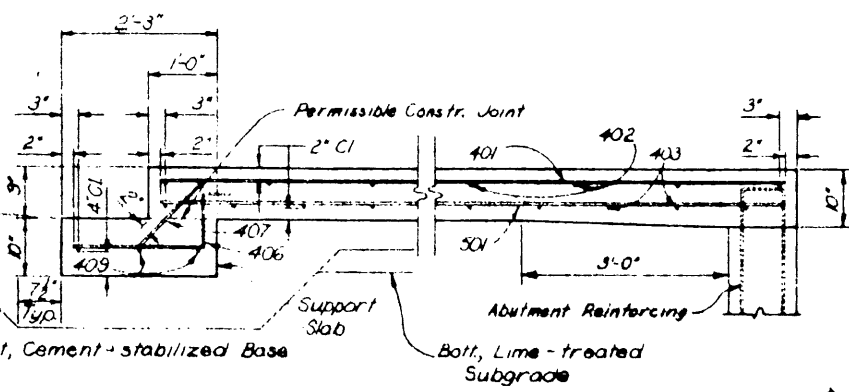
Bar dimensions are given out-to-out of bar. Radii are given to inside of bar. Reinforcing bar callouts consist of the bar size, followed by an individual two digit number.

Length of Slab along Bar	2'	Normal Ends	1 to Skewed Ends	2'	Bars 401, 410, 41, 415, 416, 501-503.
Width of Slab along Bar	2'	Normal Edges	1 to Skewed Edges	2'	Bars 402-405, 408, 409, 412-414, 417-420.
Precast Panel Wall Only	2'	Wingwall Only		2'	Bars 418, 418.

STRAIGHT BAR DIAGRAMS



BENT BAR DIAGRAMS



SECTION A-A

NOTE: Sections C-C & E-E are similar to Section A-A.

NO.	REVISION	BY	DATE
TEXAS TURNPIKE AUTHORITY DALLAS NORTH TOLLWAY			
APPROACH SLAB DETAILS			
HNTB HENSHEL HERRICK TRAMER & BERKELEY			SECTION VI
DESIGNED	JFH	DATE	2-7-83
CHECKED	GDH	DATE	3-14-83
APPROVED	GDH	DATE	2-7-83
PROJECT	None		
STANDARD DRAWING NO. 22			