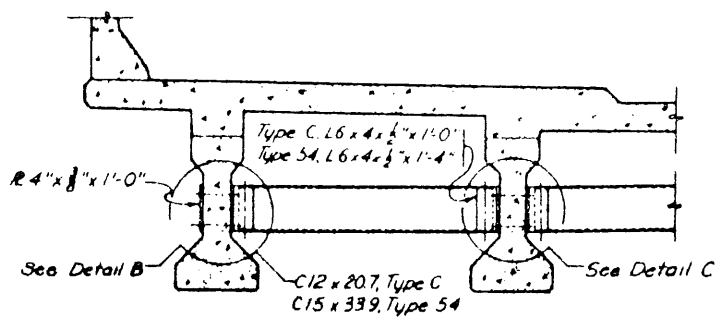


SKEW ANGLE 0°-3°

SKEW ANGLE GREATER THAN 3°

DIAPHRAGM PLAN



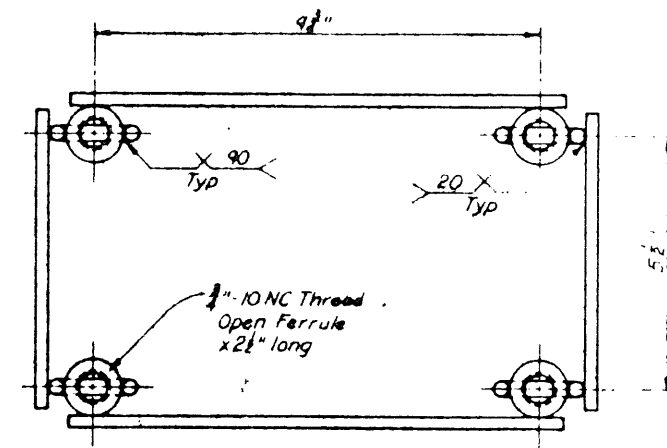
DISCONTINUOUS ASSEMBLY

CONTINUOUS ASSEMBLY

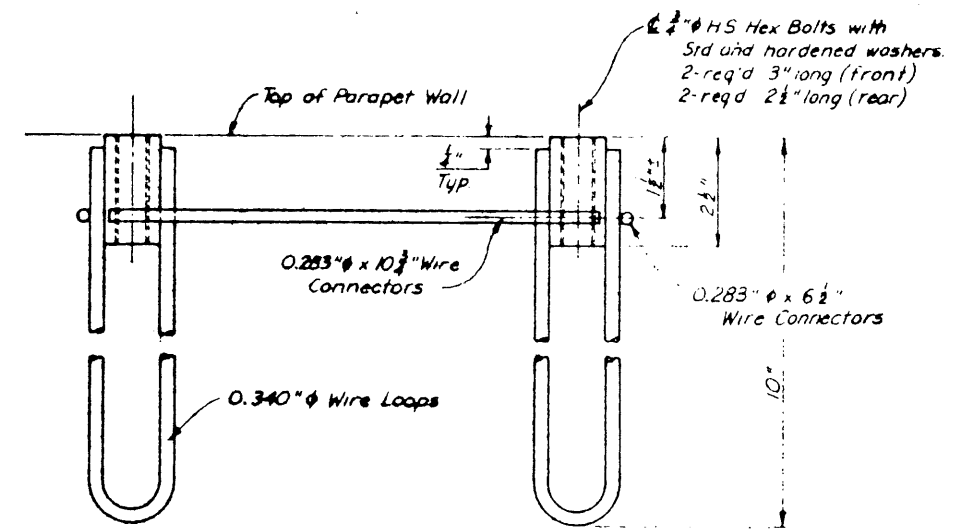
DIAPHRAGM ELEVATION

INTERIOR DIAPHRAGM NOTES:

See Slab Plans for location and spacing of interior diaphragms.
All parts of steel diaphragms shall be galvanized after fabrication. After erection, all scratched or otherwise damaged galvanized parts shall be repaired in accordance with Item 450.5.

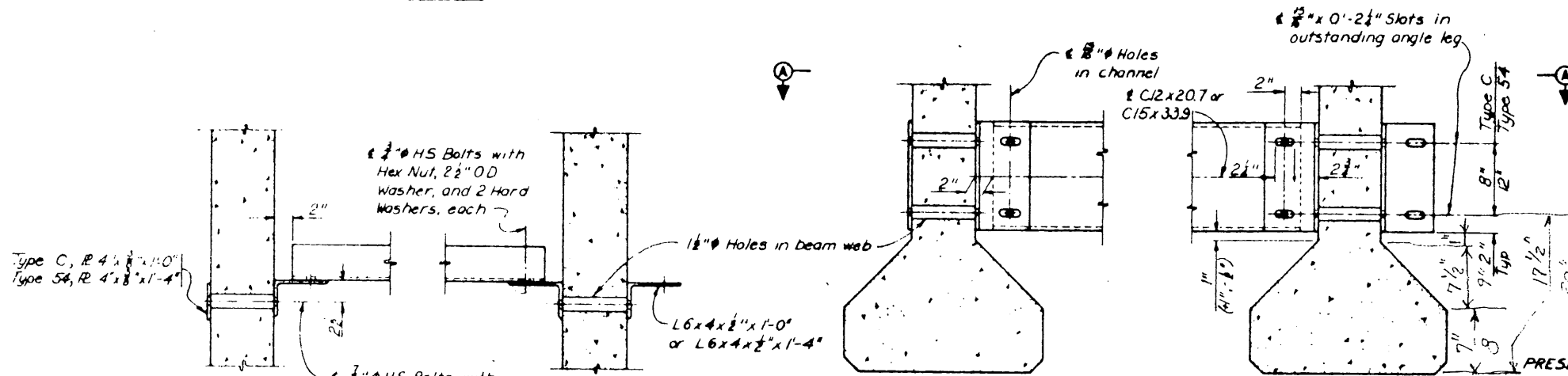


PLAN



ELEVATION

PRESET ANCHORAGE



SECTION A-A

DETAIL B

DETAIL C

INTERIOR DIAPHRAGM DETAILS

PRESET ANCHORAGE NOTES:

Fast anchorages shown hereon may be used in place of the conventional anchor bolt system shown on Standard Drawing No 33, at the option of the contractor. If the contractor elects to use the system shown hereon, the fabricator shall so indicate on erection drawings.
Material for the preset anchorage shall be as follows:
Ferrules: Steel ASTM A-108, Grade 12 L14
Wire Connectors: Steel ASTM A-510, Grade 100B
Wire Loops: Steel ASTM A-510, Grade 1030.
Hex Bolts: Steel ASTM A-325.
All bolts and washers shall be galvanized.
Numerals shown on weld symbols indicate the strength of weld in single shear in units of 100 pound per weld.

NO	REVISION	BY	DATE
TEXAS TURNPIKE AUTHORITY DALLAS NORTH TOLLWAY			
INTERIOR DIAPHRAGM AND PRESET RAIL ANCHORAGE DETAILS			
HNTB HEAVY AND CIVIL ENGINEERING			SECTION VI
DESIGNER Ram	DATE 3-9-83	DESIGNED T.H.D.	DATE
CHECKED BDH	DATE 3-16-83	SCALE NONE	
STANDARD DRAWING NO 27			