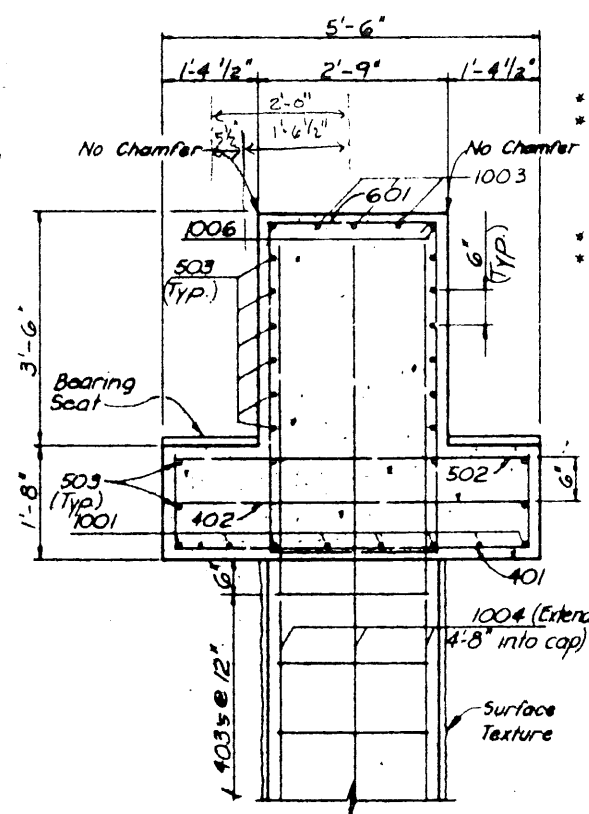
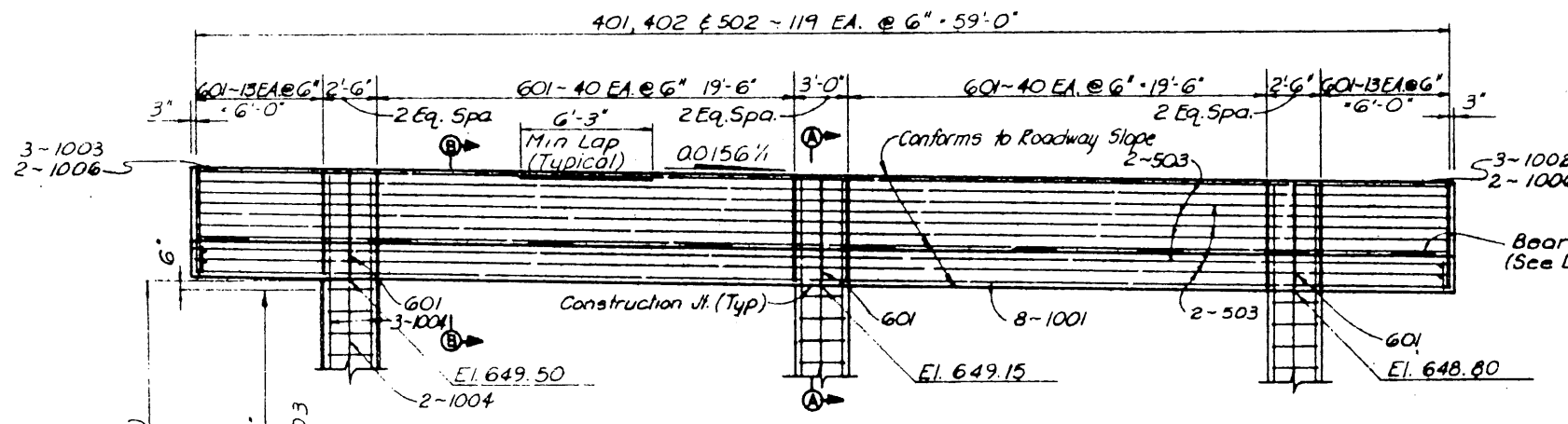


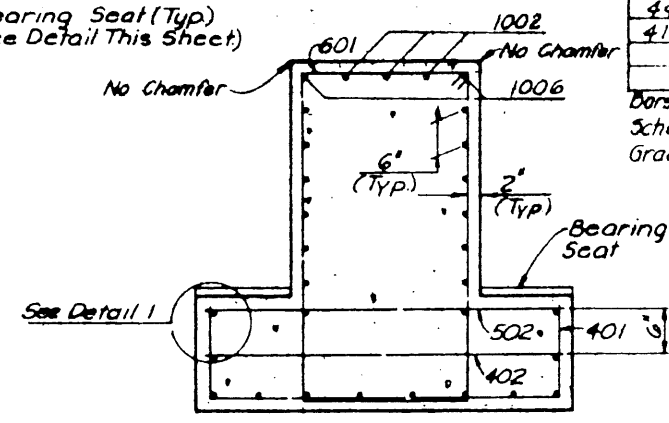
PLAN
Scale: 1/4"=1'-0"



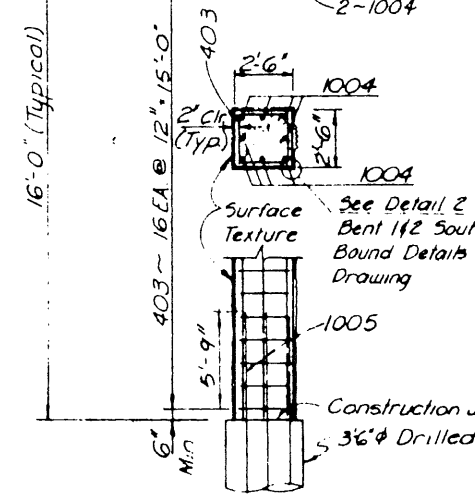
SECTION A-A
Scale: 3/4"=1'-0"



ELEVATION
Scale: 1/4"=1'-0"



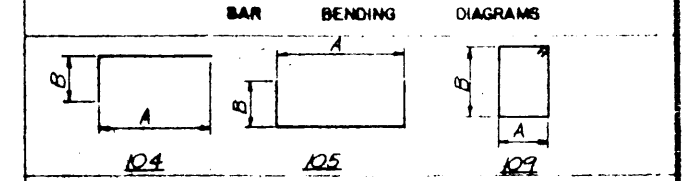
SECTION B-B
Scale: 3/4"=1'-0"



BEARING SEAT DETAILS
Scale: 3/4"=1'-0"

BENT I NB.		
BEAM NO.	BK.	FD.
9-14	0	0
15	9/16"	9/16"
16	1 1/8"	1 1/8"
17	1 1/4"	1 1/4"

REINFORCEMENT BAR SCHEDULE		DIMENSIONS					WEIGHT
MARK	NO. REQD.	LENGTH	TYPE	A	B	C	
401	174	7'-10"	105	5'-2"	7'-4"		623
402	174	5'-2"	Str.				411
403	48	9'-4"	109	2'-2"	2'-2"		299
Total							1333
501	Omitted						
502	174	5'-2"	Str.				641
503	18	59'-2"	Str.				1111
Total							1752
601	109	15'-6"	109	2'-5"	4'-10"		2536
Total							12457



ESTIMATED QUANTITY SUMMARY			
ITEM NO.	DESCRIPTION	UNIT	QUANTITY
421	Class "C" Concrete (Bent)	CY	52.8
440	Reinforcing Steel	Lb	12457
416	Drilled Shaft (42" dia)	L.F.	25

Bars Marked With An Asterisk (*) In The Reinforcement Bar Schedule Shall Conform To The Requirements Of ASTM A-706 Grade 60.

- NOTES:
- All Concrete Shall Be Class "C", $f_c = 3,600$ psi Chamfer All Exposed Corners $3/4"$ Unless Otherwise Noted
 - All Reinforcing Steel Shall Be ASTM A615, Grade 60, $f_y = 60,000$ psi
 - Dimensions Relating To Reinforcing Steel Are To Out Side Dimension Of Bar, With Radii Shown To Be Inside Of Bar.
 - See General Plan & Elevation For Expansion or Fixed Conditions Of Span.
 - Average Calculated Drilled Shaft Load - 232 Tons/Shaft
 - For Understructure Lighting Conduit Plan See Sheet No. S-11.

Note: Built-up portions of bearing seat shall be cast integrally with cap or constructed as follows: The area under the built-up portion is to be prepared in accordance with specification requirements for construction joints. The pedestal shall then be placed using an approved Pre-Packaged, Non-Shrink, Impact Resistant Grout Containing Non-Metallic Fibers, Similar to *Set* "Impact Resistant Grout". The Grout Shall be Mixed and Applied in Accordance With the Manufacturer's Recommendations.

NO.	REVISION	BY	DATE
TEXAS TURNPIKE AUTHORITY			
DALLAS NORTH TOLLWAY			
VERDE VALLEY LANE OVERPASS			
BENT I NORTHBOUND DETAILS			
TurnerCollie & Braden Inc. <small>(Consulting Engineers)</small>			SECTION VI
DESIGNED BY RGD DATE 3-83	CHECKED BY TJR DATE 3-83	DESIGNED BY TJR DATE 3-83	SCALE AS NOTED
CONTRACT NO. DNT-114 SHEET S-9 OF S-92			