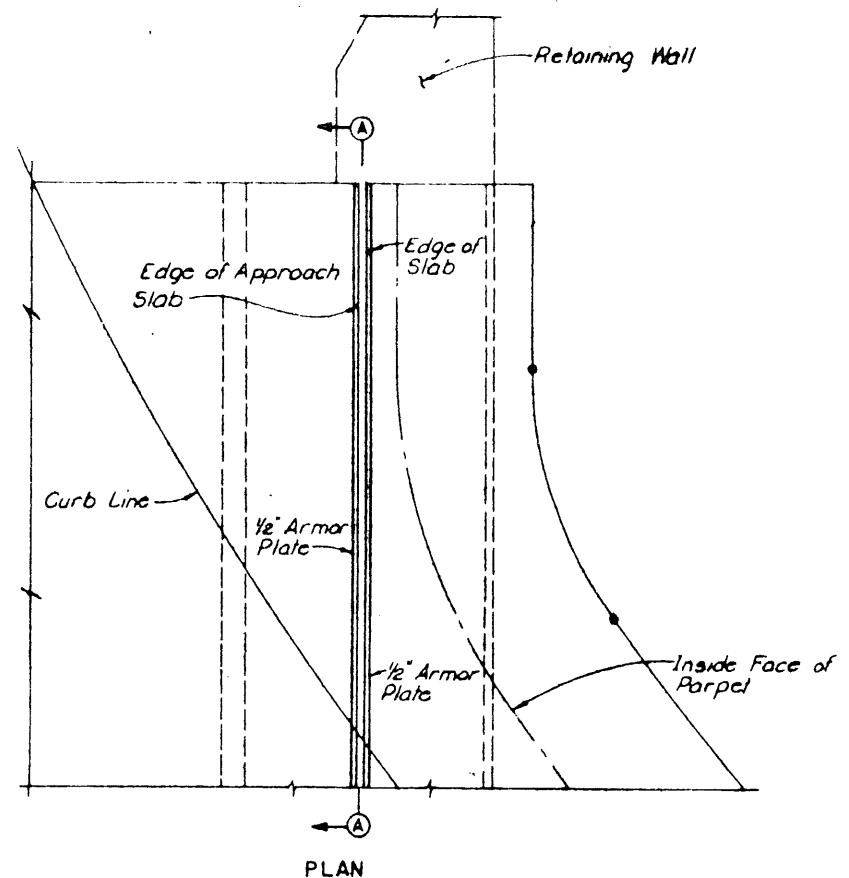


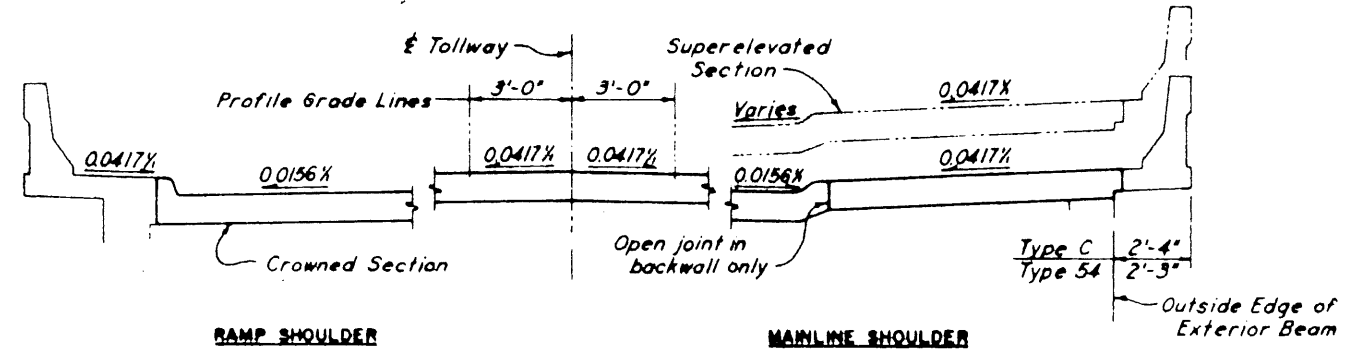
MAINLINE SHOULDER PLAN
(Mountable Curb)

RAMP SHOULDER PLAN
(Non-Mountable Curb)

PLANS - SKEWS THRU 15°



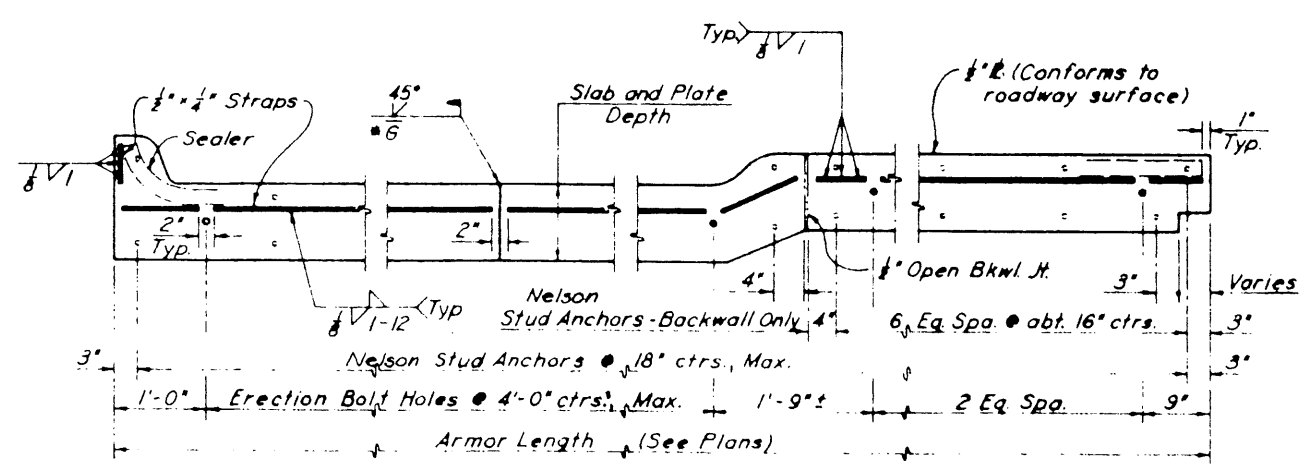
PLAN
BELT LINE ROAD UNDERPASS - ARAPAHO ROAD UNDERPASS
(NORTHWEST CORNER - BELT LINE ROAD SHOWN; OTHERS SIMILAR)



RAMP SHOULDER

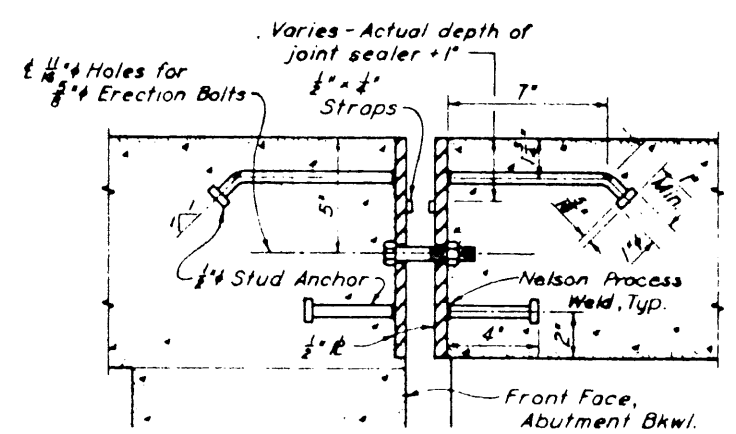
MAINLINE SHOULDER

NORMAL BRIDGE SECTION AT EXPANSION JOINT



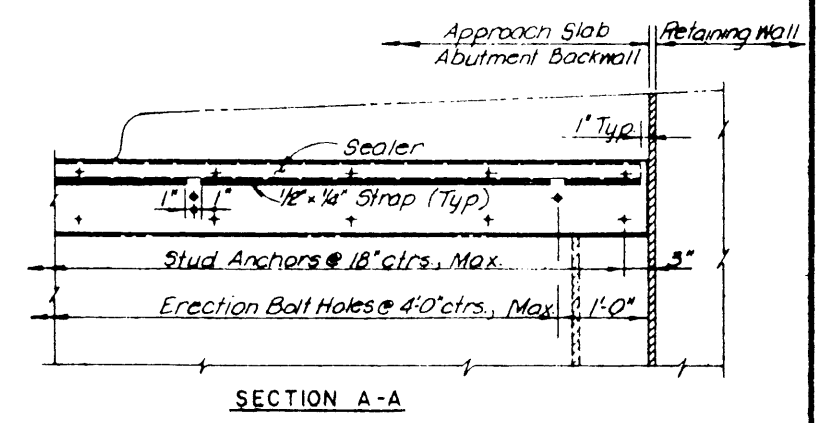
ARMOR PLATE ELEVATION

Note: Portions of welded splices to come in contact with preformed joint sealer shall be ground smooth.



ARMOR JOINT SECTION

Note: For the joint opening width, see the Plans.



SECTION A-A

GENERAL NOTES:
 Armor joints with preformed joint sealer shall be provided at all locations shown on the plans. See General Plan and Elevation sheets.
 Stud anchors shall be electric arc end-welded to the plates with complete fusion. Erection bolt holes shall be punched to line up in the final position of the armor joint plates.
 Armor joint plates shall be shipped in convenient lengths (20'-0", max., and 10'-0", min.). Corresponding plate sections shall be match marked and bolted together for shipment.
 Erection bolts shall be cut off flush with armor plate straps promptly after the concrete in the latter of the two placements has taken initial set.
 Armor plates shall be galvanized after fabrication. Damage to galvanizing shall be repaired by thorough cleaning and painting with two coats of zinc dust-zinc oxide paint conforming to the requirements of Federal Specification TT-P-641b.
 All material shall conform to the requirements of Item 442, Metal for Structures.
 For roadway curb details, see Standard Drawing No 11

NO.	REVISION	BY	DATE
TEXAS TURNPIKE AUTHORITY DALLAS NORTH TOLLWAY			
ARMOR JOINT DETAILS			
HNTB		SECTION VI	
DRAWN: <i>GDH</i>	DATE: <i>2-1-83</i>	DESIGNED: <i>GDH</i>	DATE: <i>2-1-83</i>
CHECKED: <i>JBL</i>	DATE: <i>3-14-83</i>	SCALE: <i>NONE</i>	
STANDARD DRAWING NO 28			
CONTRACT NO. DNT-114			