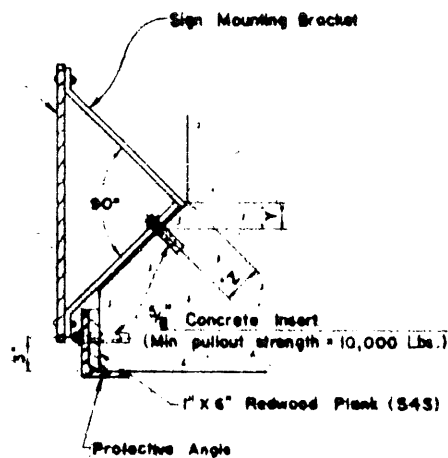


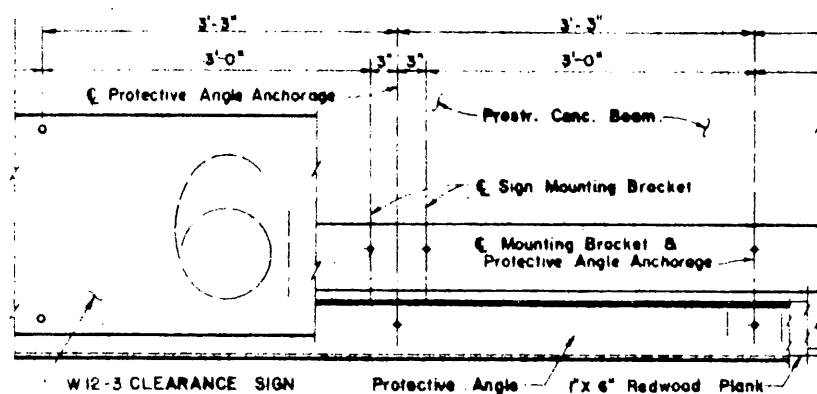
PRESTRESSED CONCRETE UNITS

W12-3 CLEARANCE SIGN

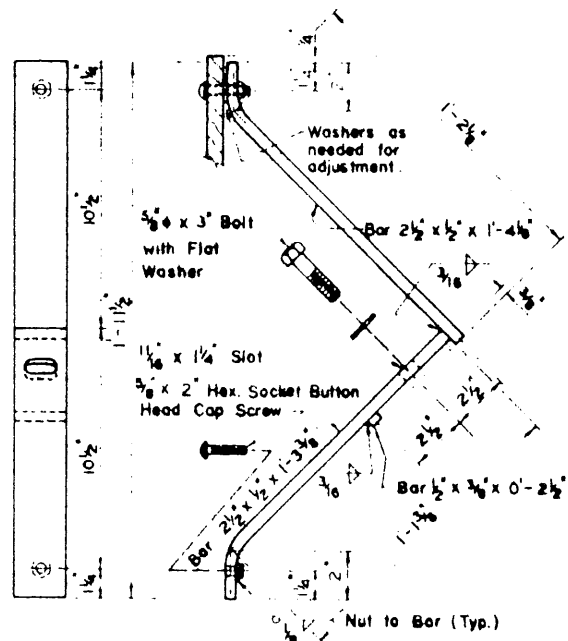
BEAM	'Y'	'Z'
TY. A	2 5/8	3 3/8
TY. B	2 1/4	3 3/8
TY. C	2 1/4	3 3/8
TY. 54	2 1/4	3 3/8
TY. 72	2 1/4	3 3/8
TY. IV	6 1/4	8 3/8



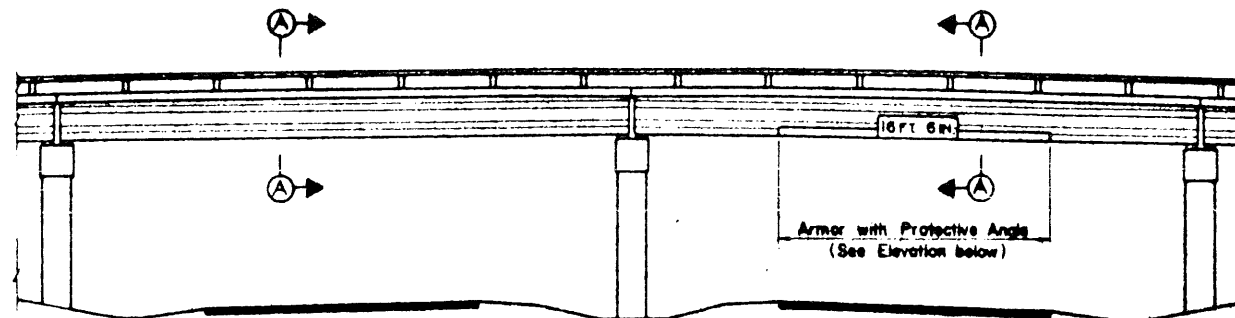
SEC. A-A



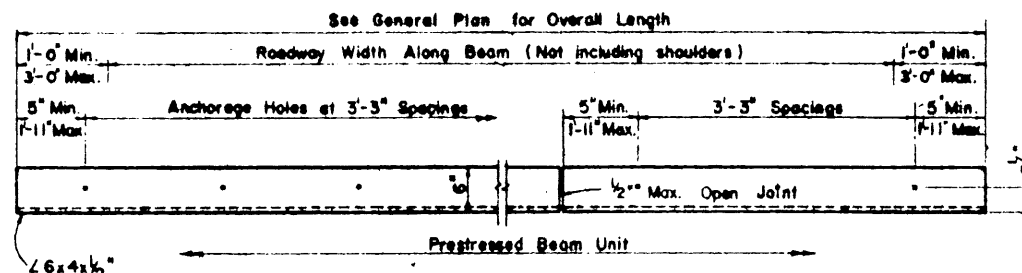
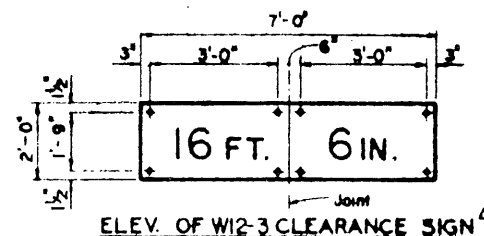
TYPICAL INSTALLATION OF CLEARANCE SIGN & PROTECTIVE ANGLE



CLEARANCE SIGN MOUNTING BRACKET

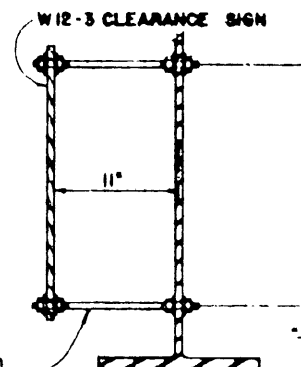


TYPICAL BRIDGE ELEVATION



ELEVATION OF PROTECTIVE ANGLE

STEEL GIRDER & I-BEAM UNITS



3/4 x 1'-4" Threaded Rod with 4 Hex. Nuts & 4 Flat Washers.

CLEARANCE SIGN MOUNTING BOLTS

GENERAL NOTES:

Clearance signs shall be furnished by the Authority for installation by the Contractor. Blanks shall be of 0080 inch aluminum. Sign numerals and letters shall be Series E with stroke modified to 20% of letter height. Numbers shall be 12 inches high and letters shall be 8 inches high.

Protective Angles shall be Structural steel conforming to A.S.T.M. Designation A36, A441, A572 or A588 and may be shipped in convenient lengths (11'-4" Min.)

Redwood Planks shall be beveled to clear inside radius of Protective Angle and shall be full length of angle. Joints in plank shall not coincide with joints in angle.

Either clearance signs, protective angles or both together may be installed using these details. For clearance signs these details are appropriate for skew angles up to 30°. For protective angles these details are appropriate for any skew.

Plans may require the complete assembly consisting of protective angle and mounting brackets, sign and sign mounting brackets, or may require only portions of this assembly, as noted on the General Plan and Elevation sheet.

REPRODUCED FROM
TEXAS STATE DEPARTMENT OF HIGHWAYS
AND PUBLIC TRANSPORTATION
STANDARD DRAWING BPA
Rev. 5-81

NO.	GENERAL REVISIONS	DATE
1		3-14-83

TEXAS TURNPIKE AUTHORITY
DALLAS NORTH TOLLWAY

BRIDGE PROTECTIVE ASSEMBLY

HNTB SECTION VI

THD 5-81
BDM 3-12-83

THD 5-81
NONE

STANDARD DRAWING NO 29