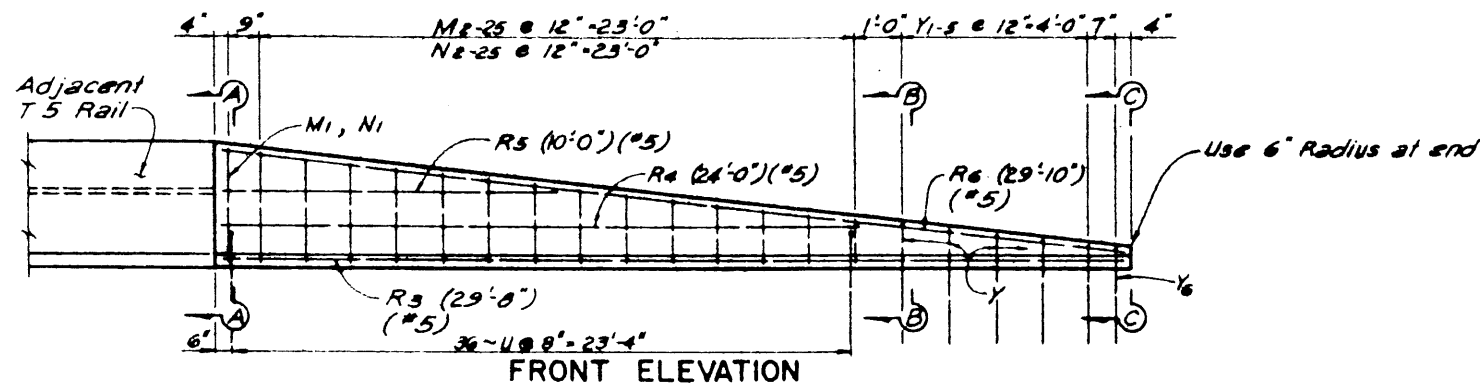
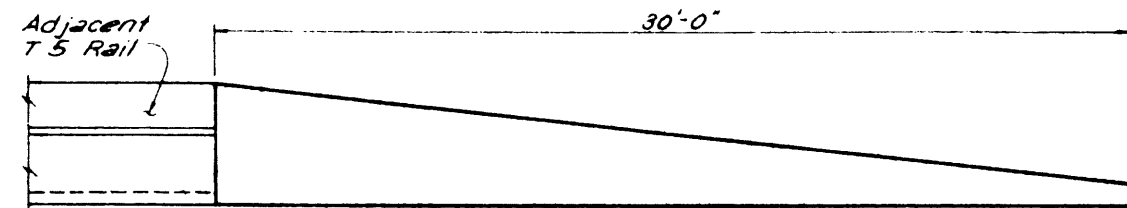


PLAN

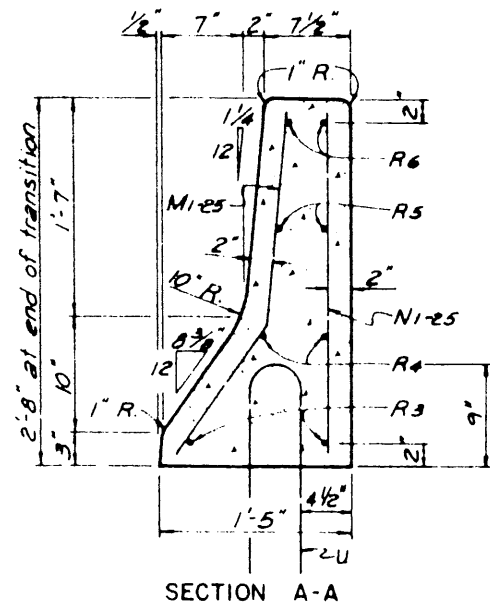


FRONT ELEVATION

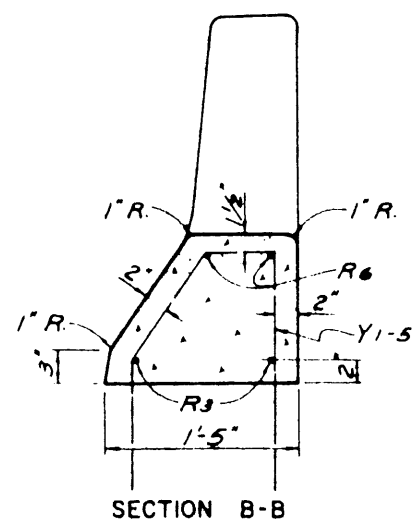


REAR ELEVATION

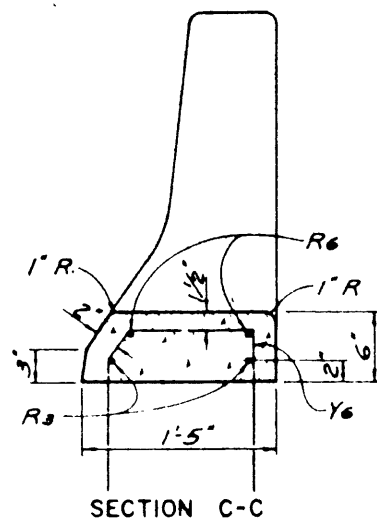
**GENERAL NOTES:**  
 Designed according to A.A.SHTO, 1977 Standard Specifications and Interims thru 1982.  
 All parts of the railing including concrete parapet wall and reinforcing are included in the price bid per linear foot of rail.  
 All concrete for railing wall shall be Class C.  
 Dimensions relating to reinforcing steel are to centers of bars.  
 See Standard Drawing No. 30 for Concrete Traffic Rail, Type T5 Details.



SECTION A-A

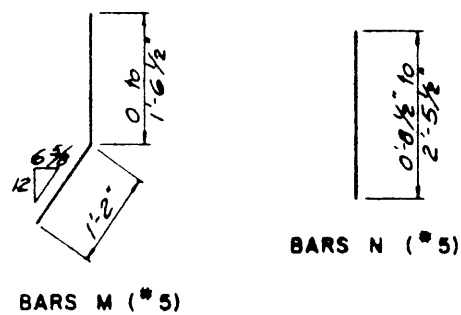


SECTION B-B



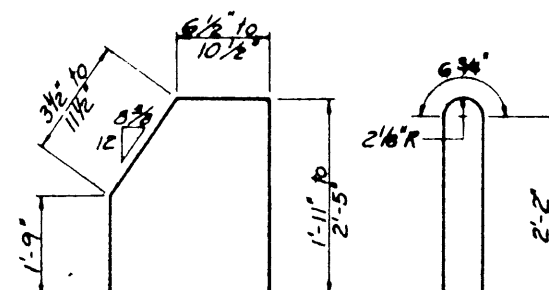
SECTION C-C

TRANSITION SECTION FROM T5 RAIL TO 6" CURB



BARS M (#5)

BARS N (#5)



BARS Y (#5)

BARS U (#5)

REPRODUCED FROM  
 TEXAS STATE DEPARTMENT OF HIGHWAYS  
 AND PUBLIC TRANSPORTATION  
 HOUSTON URBAN PROJECT  
 TRAFFIC RAIL TYPE T5 (MOD.)  
 TRANSITION SECTION  
 8-82

General Revisions		JRA	1-84
NO.	REVISION	BY	DATE
TEXAS TURNPIKE AUTHORITY DALLAS NORTH TOLLWAY			
CONCRETE TRAFFIC RAIL, TYPE T5 TRANSITION SECTION			
Turner Collie & Braden Inc. Consulting Engineers			SECTION VI
DESIGNED JRA	DATE 8-82	SCALE NONE	DATE 8-82
STANDARD DRAWING NO. 30A			
CONTRACT NO. DNT-114			

004161