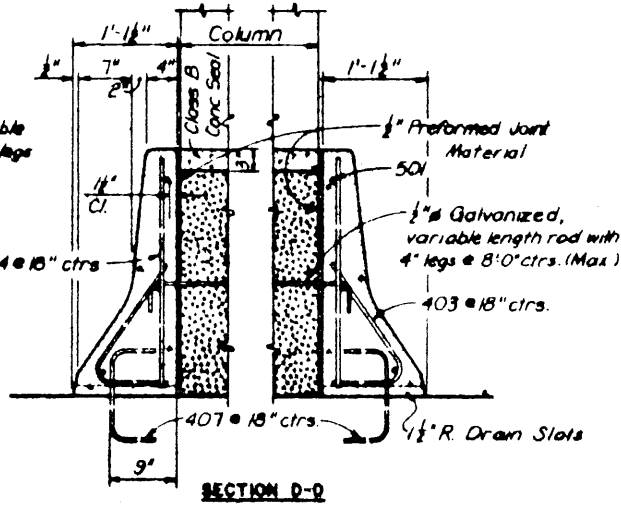
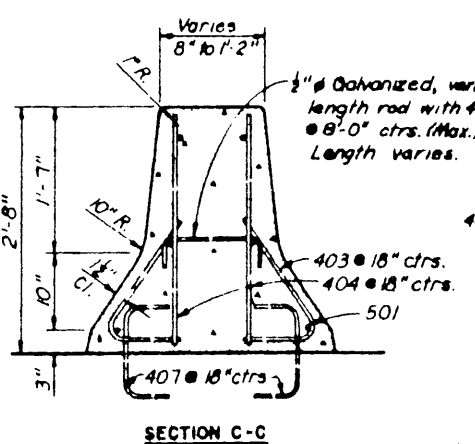
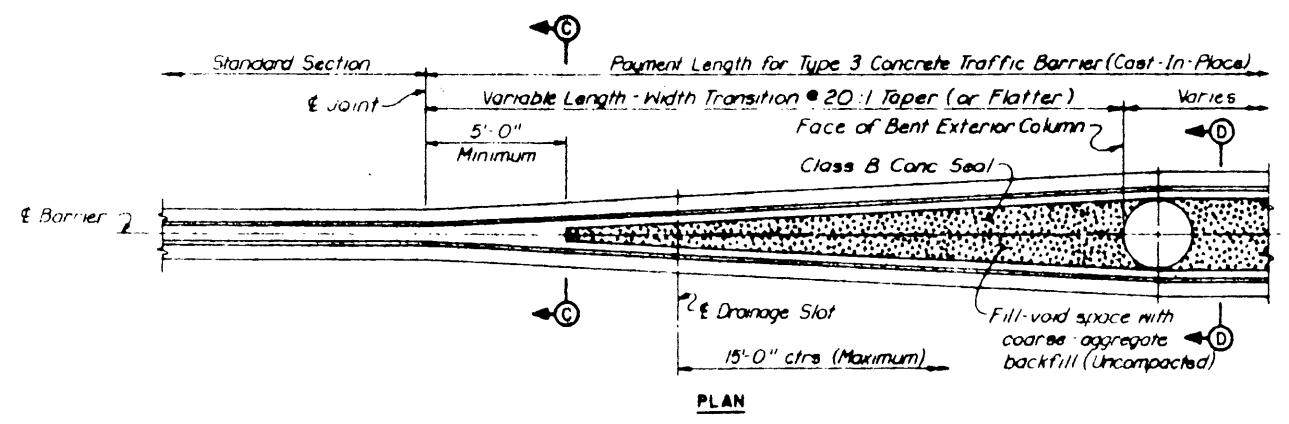


TYPE 2 CONCRETE TRAFFIC BARRIER

TYPE 2 CONCRETE TRAFFIC BARRIER NOTES:
 Anchor bolts and conduit will not be paid directly but shall be considered subsidiary to the item "Concrete Traffic Barrier (Type 2)". All high strength anchor bolts shall be 1/2" dia x 2'-3" ASTM A 325 rods with the top threaded not less than 6", and this threaded end galvanized not less than 8" and furnished with galvanized hex nuts, flat and lock washers. The lower end of the rods shall be threaded 2" and furnished with 1/2"x4"x8" anchor plates and nuts. Tack weld anchor plates to nuts.
 For Section A-A, see Cast In Place Section on Standard Drawing No. 31.
 For additional notes, see Standard Drawing No. 31.

TYPE 3 CONCRETE TRAFFIC BARRIER NOTES:
 Longitudinal bars at construction joints shall extend beyond the joint so that 24 bar diameter splices will be a minimum of two feet from the construction joint.
 For details of standard sections and the cast-in place & precast joints, see Standard Drawing No. 31.
 For additional notes, see Standard Drawing No. 31.

REINFORCING STEEL NOTES
 Bar dimensions are given out to out of bar.
 Radii are given to inside of bar.
 Reinforcing bar callouts consist of the bar size followed by an individual two digit number.



TYPE 3 CONCRETE TRAFFIC BARRIER

NO.	REVISION	BY	DATE
TEXAS TURNPIKE AUTHORITY DALLAS NORTH TOLLWAY			
CONCRETE TRAFFIC BARRIER TYPE 2 AND TYPE 3 PANEL DETAILS			
HNTB HIGHWAY CONSULTANTS, ENGINEERS & ARCHITECTS			SECTION VI
DRAWN	JTK	DATE	1-27-83
DESIGNED	BDH	DATE	1-27-83
CHECKED	BDH	DATE	3-16-83
SCALE	NONE		
STANDARD DRAWING NO. 32			