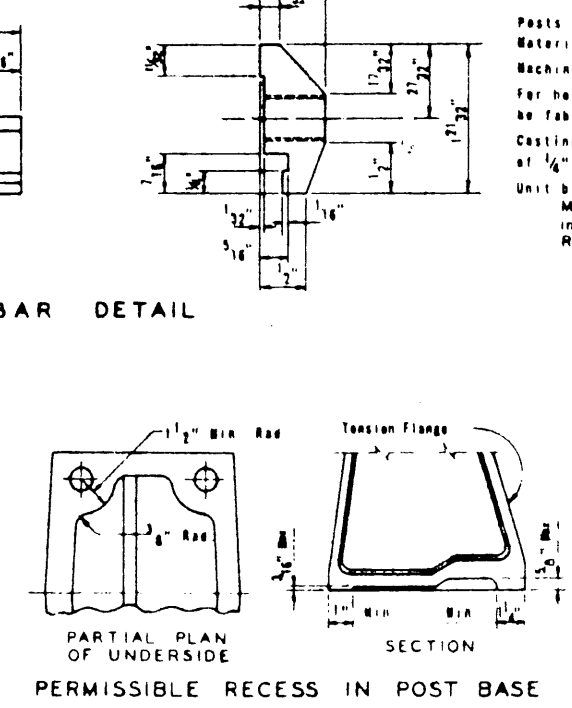
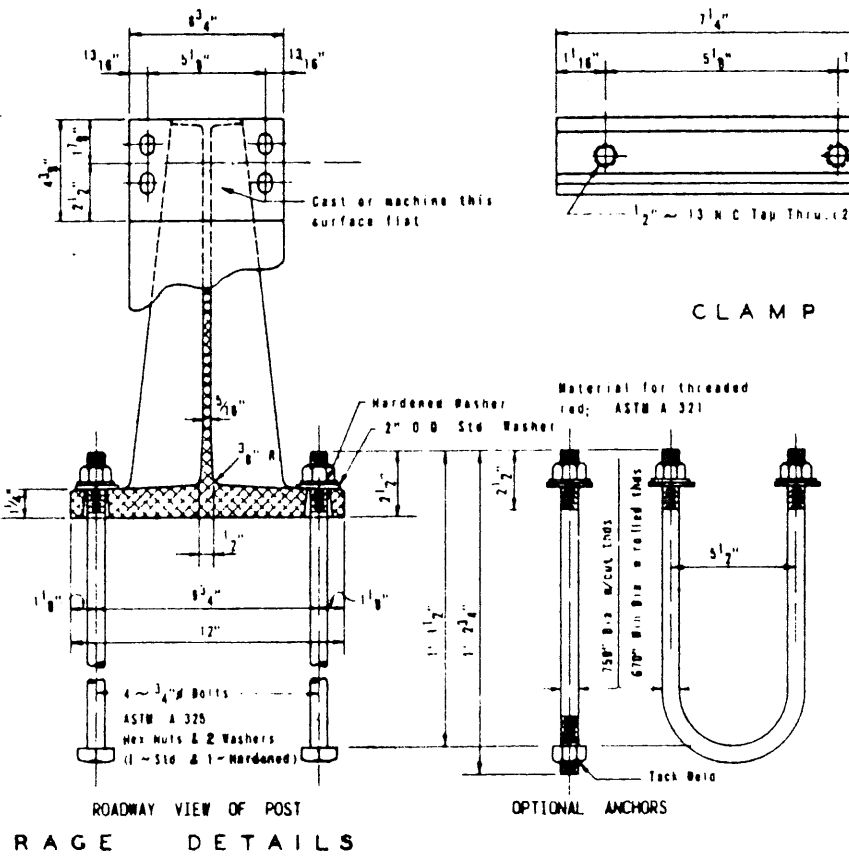
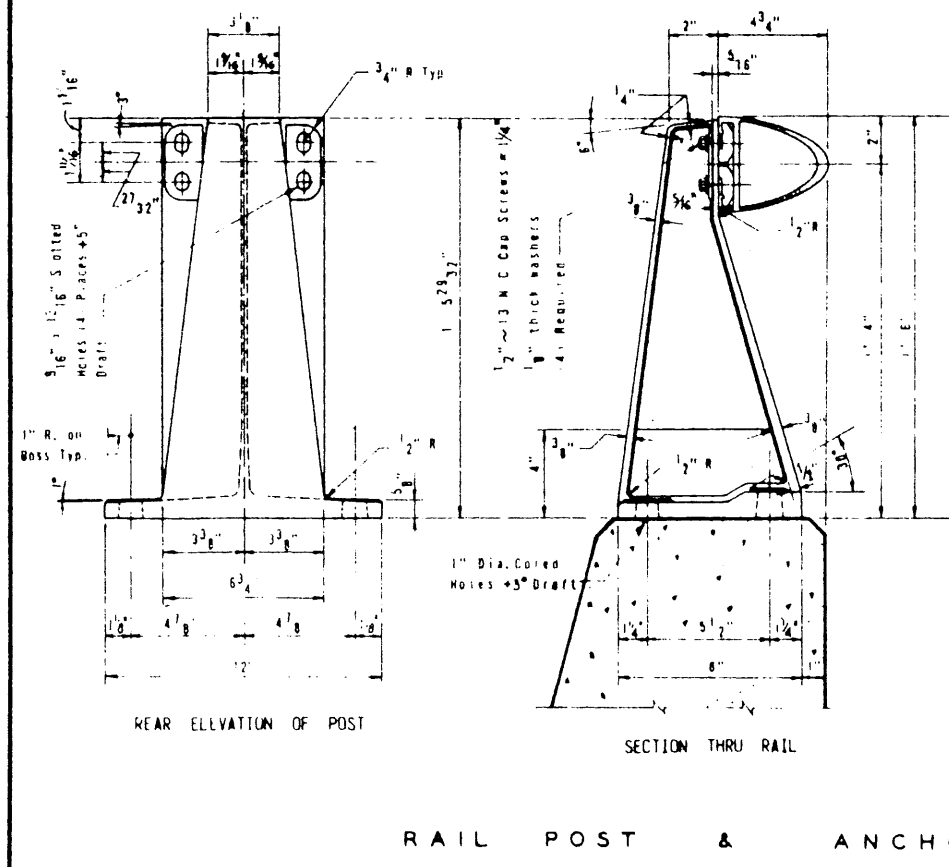


GENERAL NOTES:

- △ Designed according to AASHTO 1977 Standard and Interim Specifications thru 1982. All open ends of the rail shall be capped.
- The face of concrete railing shall be vertical unless otherwise shown in plans. Rail posts shall be perpendicular to top of concrete. Grout may be used under base plates if necessary.
- Panel lengths of rail shall be attached to a minimum of three posts except at abutment wingwall.
- All steel components except reinforcing shall be galvanized unless otherwise shown in plans.
- Nuts and washers for anchor bolts shall conform to A 325 requirements. Nuts shall be topped or chased after galvanizing. Bolts and nuts shall have Class 2A and 2B fit tolerances.
- △ For precast anchorage details, see Standard Drawing No. 27.



Posts shall be cast aluminum alloy A444 T4. Material for rails shall be aluminum - A S T. M. 6221 - alloy 6061-T6. Machine screws for rail attachment shall be stainless steel. For horizontal curves of radius less than 1000 ft. the rail member shall be fabricated to follow the curvature of the roadway. Castings shall have a maximum draft of 3° and a minimum radius of fillet of 1/4" unless otherwise shown. Unit bid price for Rail Type C4 includes: Metal Railing, Posts, Connectors, Anchor Bolts; Concrete Parapet Wall is included in the Class "C" Concrete (Slab) Quantity and will be paid for under Item 422, Reinforced Concrete Slab.

REPRODUCED FROM
 TEXAS STATE DEPARTMENT OF HIGHWAYS
 AND PUBLIC TRANSPORTATION
 STANDARD DRAWING C4
 12-80

General Revisions		GD#	1-83
NO.	REVISION	BY	DATE
TEXAS TURNPIKE AUTHORITY DALLAS NORTH TOLLWAY			
ALUMINUM COMBINATION RAIL TYPE C4			
Turner Collier & Braden Inc. SECTION VI			
DRAWN: THD	DATE: 12-80	CHECKED: THD	DATE: 12-80
DESIGNED: JRA	DATE: 7-83	SCALE: NONE	
STANDARD DRAWING NO. 33			
CONTRACT NO. DNT-114			

G04164