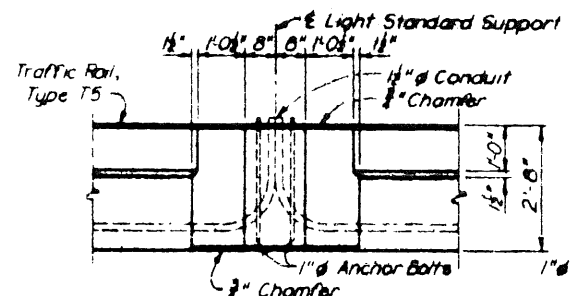


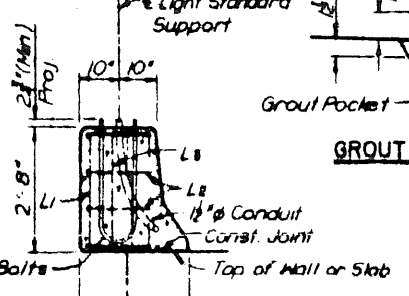
PLAN

Note: All light support reinforcing bars shall be #5, ASTM A-615, Grade 60.



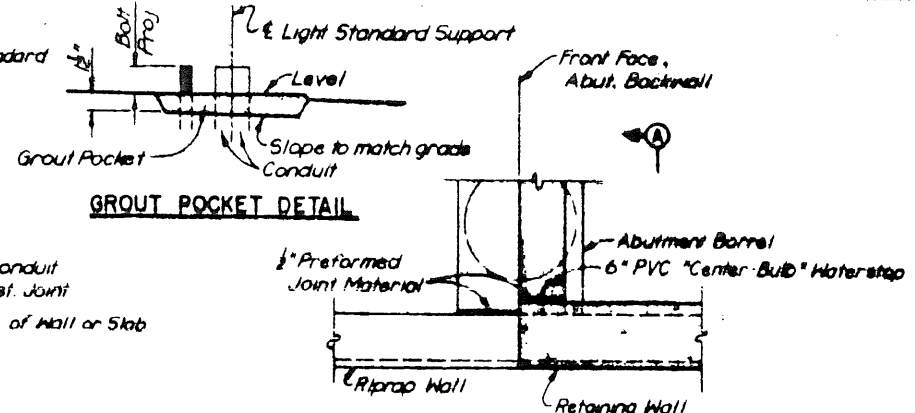
ELEVATION

Note: Light standard supports shall not be paid for directly, but shall be considered subsidiary to Item 450, Traffic Rail, Type "T5"

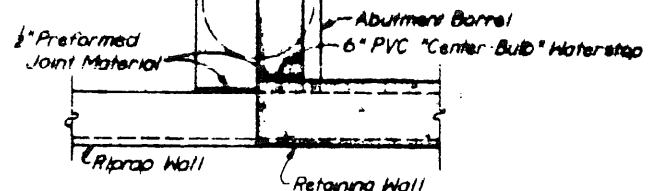


SECTION

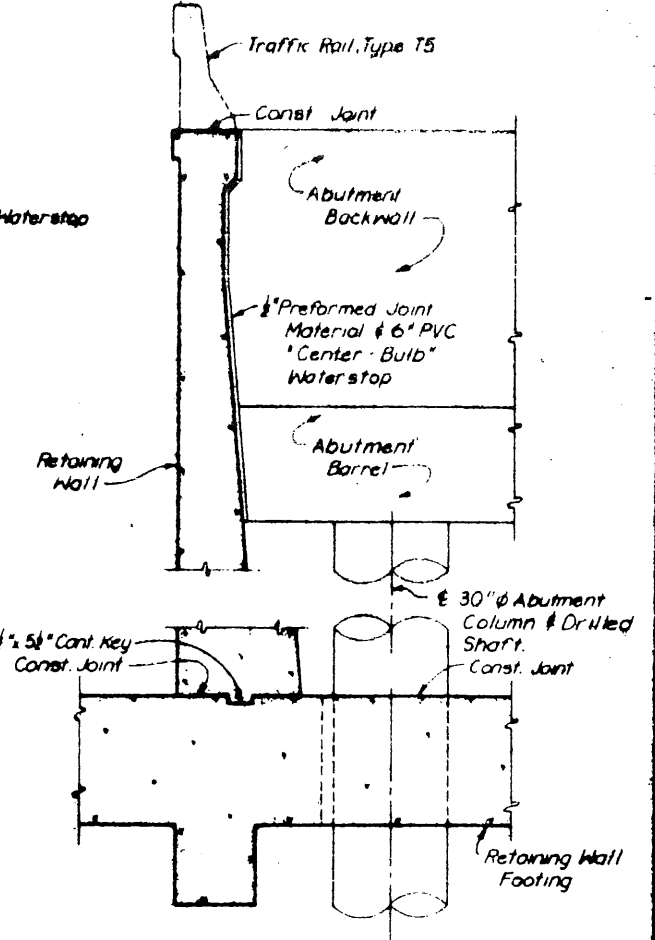
Note: For Concrete Traffic Rail, Type T5 details, see Standard Drawing No. 30.



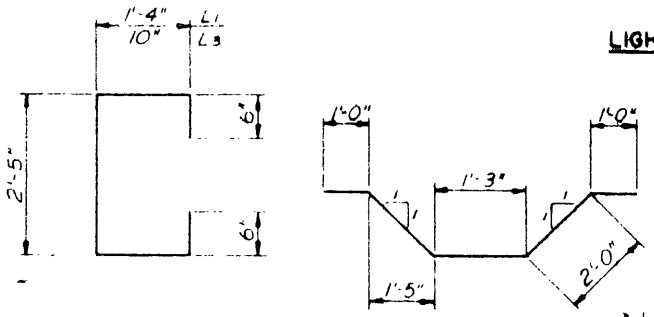
GROUT POCKET DETAIL



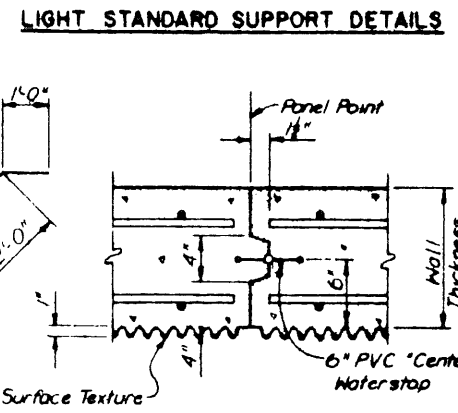
PLAN - TOP OF WALL



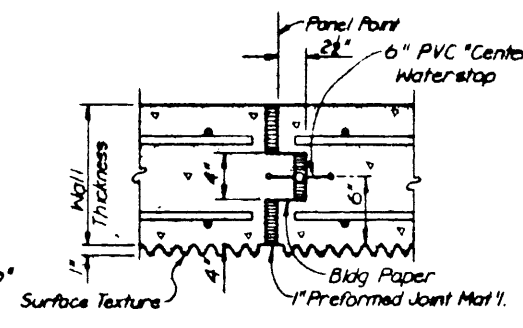
SECTION A-A



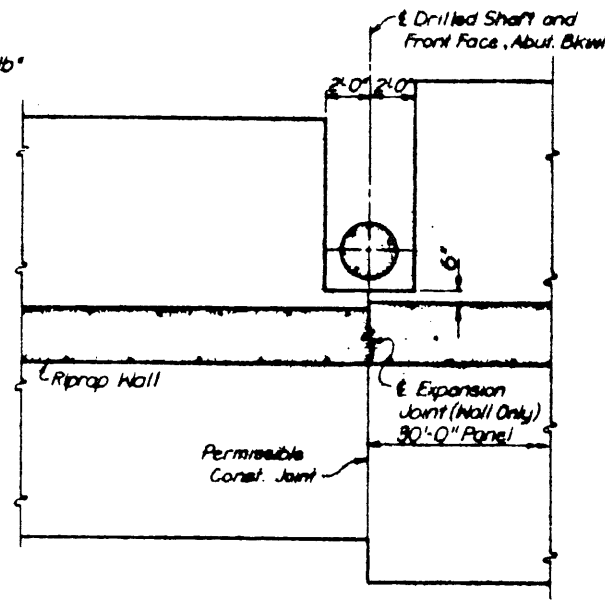
BAR BENDING DIAGRAMS



CONTRACTION JOINT

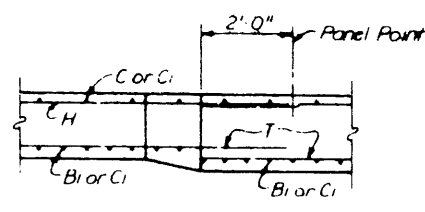


EXPANSION JOINT

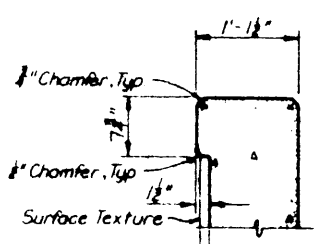


PLAN - TOP OF FOOTING

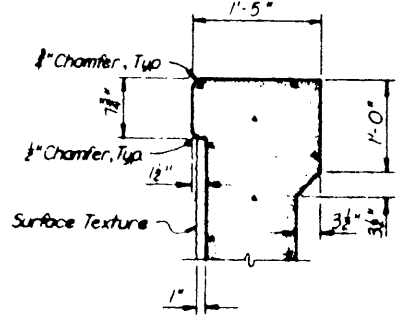
ABUTMENT CONNECTION DETAILS



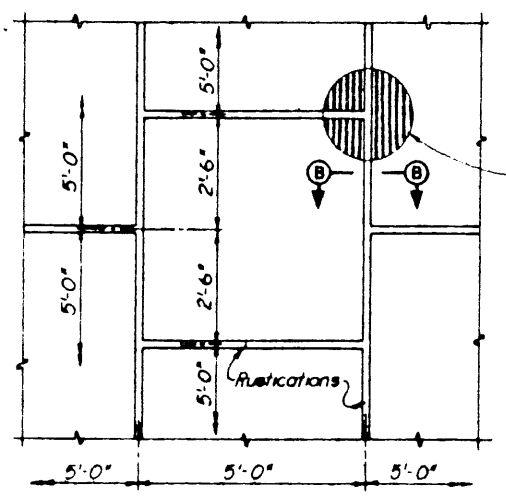
ELEVATION



WALL CAP AT RIPRAP

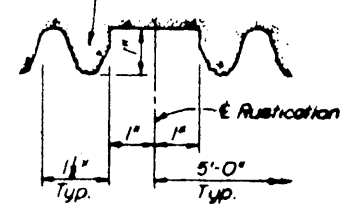


TYPICAL WALL CAP



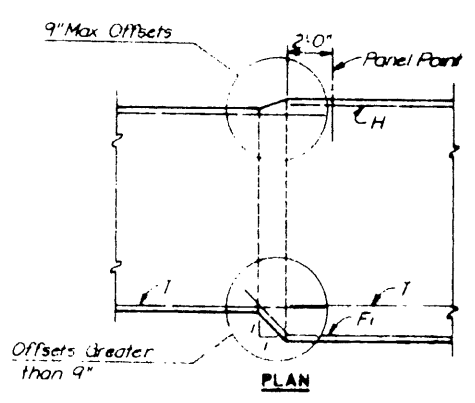
SURFACE TEXTURE PATTERN

Surface Texture, see Specifications



SECTION B-B

Note: Vertical rustication is shown, horizontal rustication is similar.



FOOTING TRANSITION DETAILS

NO.	REVISION	BY	DATE
TEXAS TURNPIKE AUTHORITY DALLAS NORTH TOLLWAY			
ELEVATED ROADWAY SECTION CAST-IN-PLACE CONCRETE RETAINING WALL DETAILS			
HNTB			SECTION VI
DESIGNED BY	JFK	DATE	4-8-83
CHECKED BY	YAL	DATE	6-2-83
STANDARD DRAWING NO. 41			