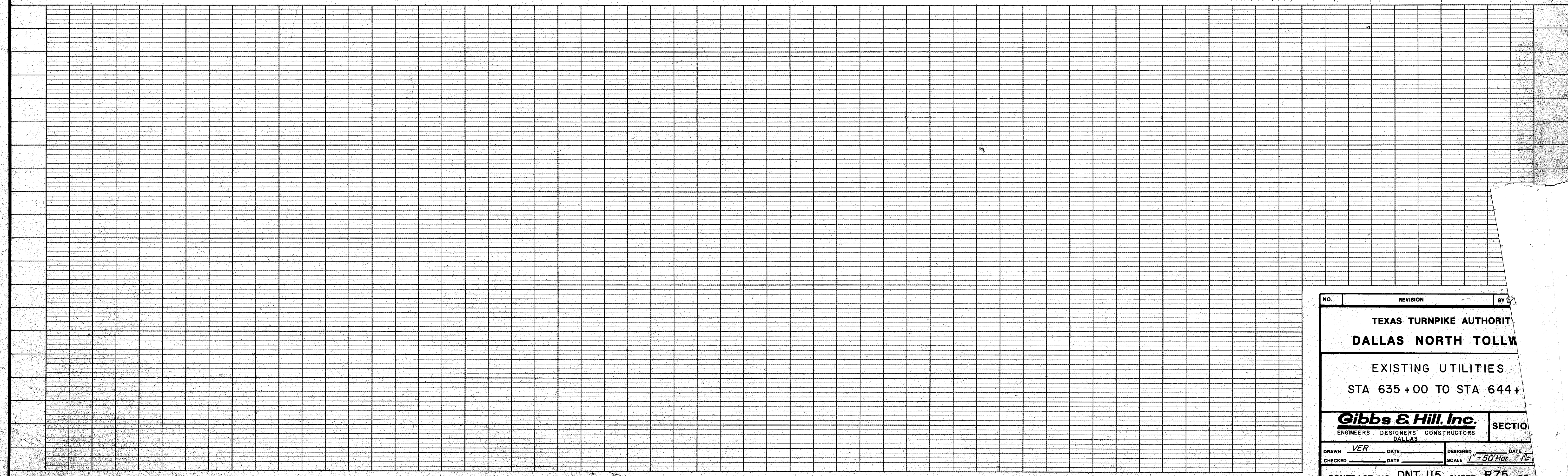


NOTE:
 The information shown on this drawing concerning type and location of underground utilities is not guaranteed to be accurate or all inclusive. The Contractor is responsible for making his own determinations as to type and location of underground utilities as may be necessary to avoid damage thereto. The Contractor shall verify location of underground pipe lines, conduits and structures by contacting owners of underground utilities and by prospecting in advance of excavation operations.

Tollway Curve Data
 PI (Sta) 641+97.20
 N = 472036.392
 E = 2208136.849
 Δ = 14°23'46"
 D = 3°00'00"
 R = 1909.86'
 T = 241.18'
 L = 479.82'



NO.	REVISION	BY
TEXAS TURNPIKE AUTHORITY		
DALLAS NORTH TOLLWAY		
EXISTING UTILITIES		
STA 635+00 TO STA 644+		
Gibbs & Hill, Inc.		SECTION
ENGINEERS DESIGNERS CONSTRUCTORS DALLAS		
DRAWN	VER	DATE
CHECKED	DATE	SCALE 1" = 50' Hor. 1" = 10' Vert.
CONTRACT NO. DNT-115 SHEET R75 OF		