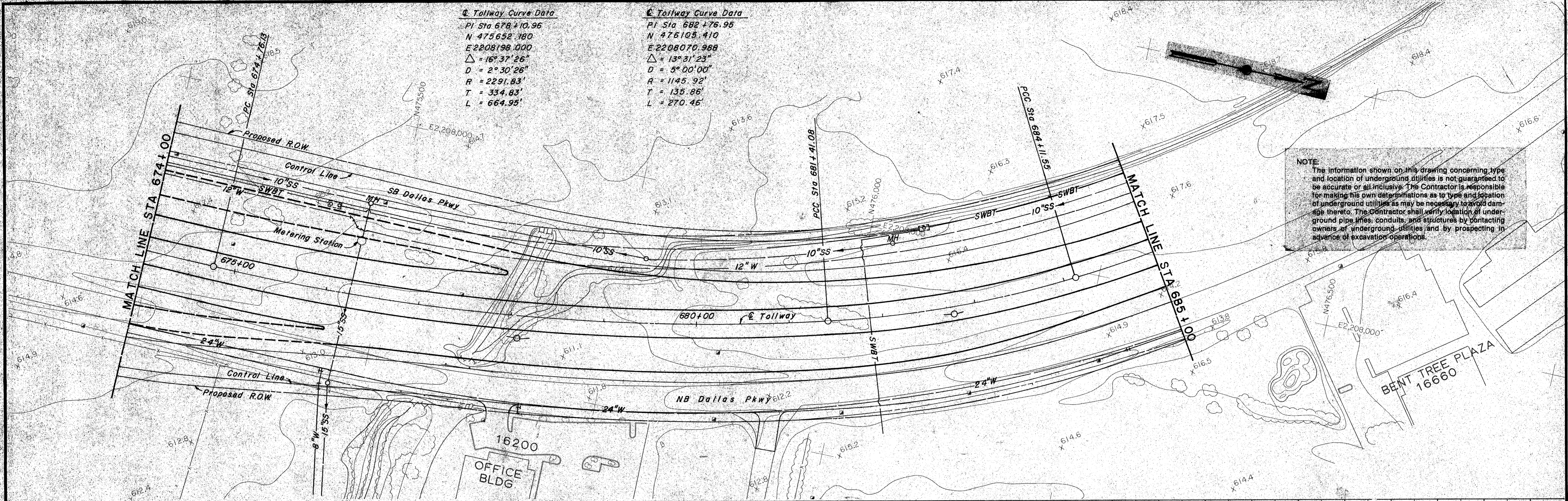
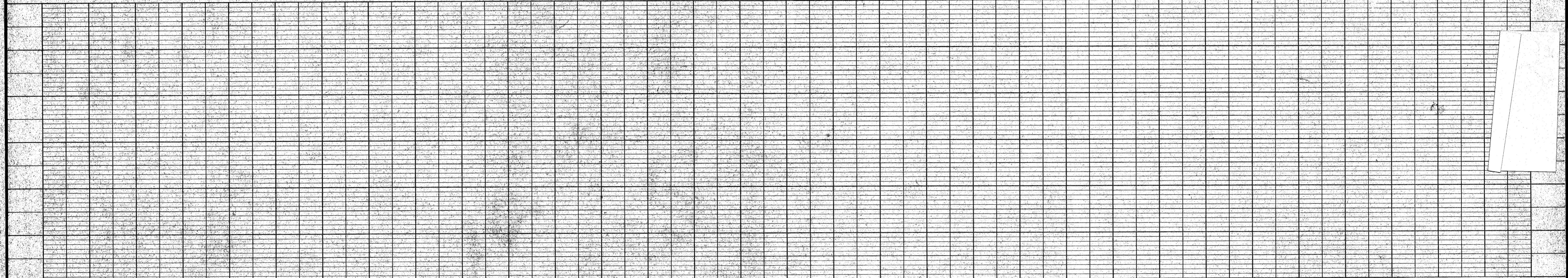


**E Tollway Curve Data**  
 PI Sta 678+10.96  
 N 475652.180  
 E 2208198.000  
 $\Delta = 16^\circ 37' 26''$   
 $D = 2^\circ 30' 26''$   
 $R = 2291.83'$   
 $T = 334.83'$   
 $L = 664.95'$

**E Tollway Curve Data**  
 PI Sta 682+76.95  
 N 476103.410  
 E 2208070.988  
 $\Delta = 13^\circ 31' 23''$   
 $D = 5^\circ 00' 00''$   
 $R = 1145.92'$   
 $T = 135.86'$   
 $L = 270.46'$



**NOTE**  
 The information shown on this drawing concerning type and location of underground utilities is not guaranteed to be accurate or all inclusive. The Contractor is responsible for making his own determinations as to type and location of underground utilities as may be necessary to avoid damage thereto. The Contractor shall verify location of underground pipe lines, conduits, and structures by contacting owners of underground utilities and by prospecting in advance of excavation operations.



NO.	REVISION	BY	DATE
<b>TEXAS TURNPIKE AUTHORITY</b>			
<b>DALLAS NORTH TOLLWAY</b>			
EXISTING UTILITIES			
STA 674+00 TO STA 685+00			
<b>Gibbs &amp; Hill, Inc.</b> ENGINEERS DESIGNERS CONSTRUCTORS DALLAS			SECTION VII
DRAWN	VER	DATE	9-13-83
CHECKED		DATE	
		DESIGNED	
		SCALE	1"=50'
CONTRACT NO. DNT-115 SHEET R79 OF R85			