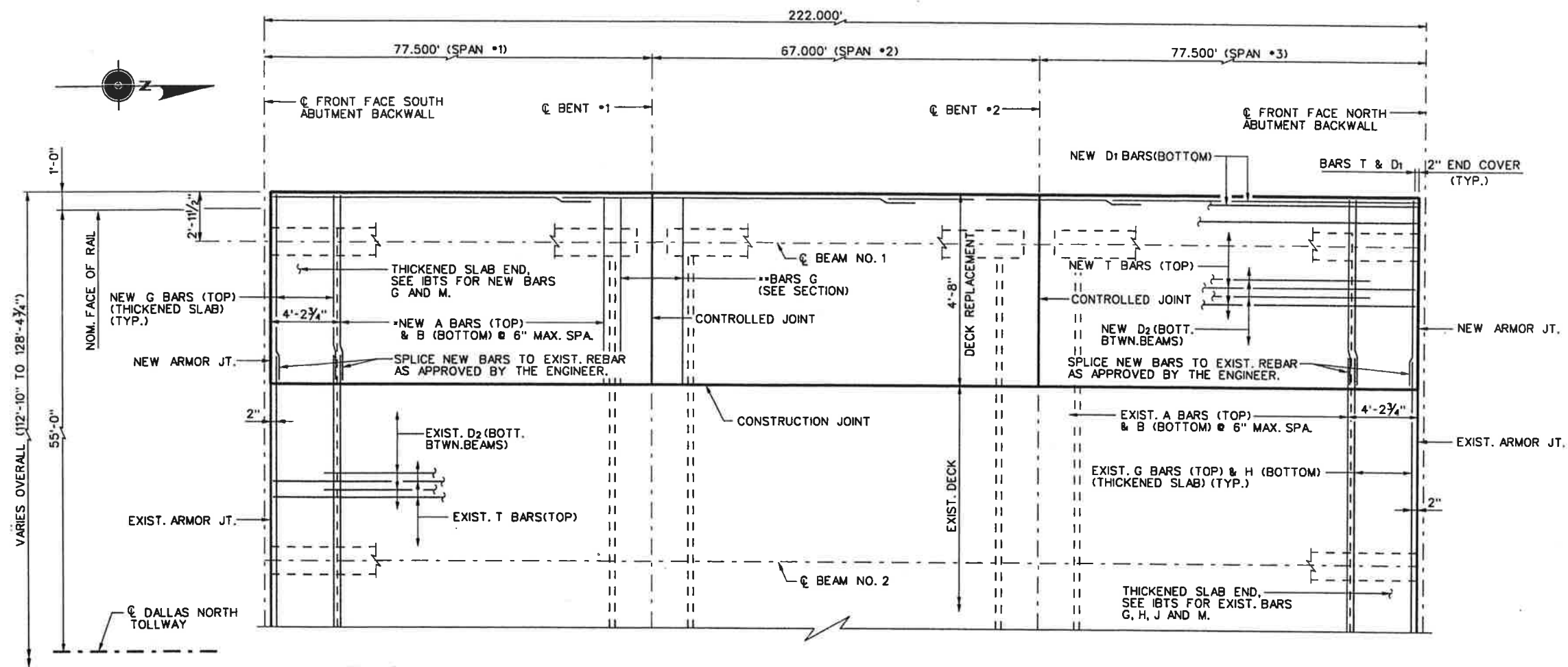


8/30/2005 12:38:13 PM K:\PROJECTS\Hk1\52050401\DNT-STM\_CIF231\Sheets\Bridge Modification Plans\VerdeValley\d07bbvvs04.dgn

BAR TABLE	
BAR	SIZE
A	#5
B	#5
D	#5
G	#5
M	#5
T	#4



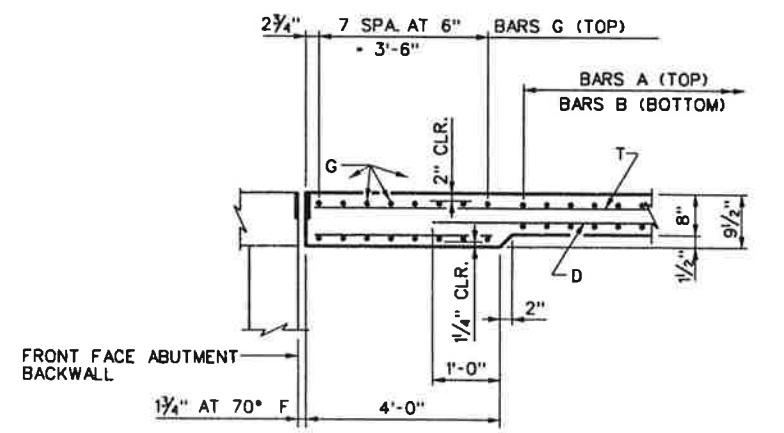
\* NOTE: BARS A AND B PLACED IN EACH SPAN @ 6" CTRS BETWEEN THICKENED SLABS AT ABUTMENTS AND BENTS.

**PLAN**

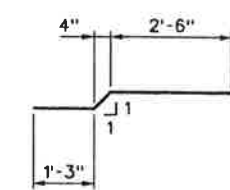
\*\*NOTE: BARS G TO EXTEND TO EDGE OF DECK OVERHANG.

**GENERAL NOTES:**

DESIGNED ACCORDING TO AASHTO 2002 STANDARD AND CURRENT INTERIM SPECIFICATIONS.  
 SEE IBTS STANDARD FOR THICKENED SLAB END DETAILS AND QUANTITY ADJUSTMENTS.  
 ALL REINFORCING STEEL SHALL BE GRADE 60, EPOXY COATED.  
 CONCRETE STRENGTH F'C - 4,000 PSI.  
 BAR LAPS, WHERE REQUIRED, SHALL BE AS FOLLOWS:  
 COATED - #4 - 2'-1"  
 #5 - 2'-7"



**THICKENED SLAB END DETAIL**  
NTS



**BARS B**



*DWS*  
08/31/2005

NO.	DATE	REVISION	APPROV.
DALLAS NORTH TOLLWAY			
<b>NTTA</b> NORTH TEXAS TOLLWAY AUTHORITY			
PRESTRESSED CONCRETE I-BM SPAN (TYPE C) VERDE VALLEY LANE OVERPASS SHOULDER REPLACEMENT			
SHEET 5 OF 5			
<b>PBSJ</b>		STM 4 & 5 PLAN SET A	
DRAWN	TLH	DATE	03-21-05
CHECKED	JFT	DATE	03-25-05
DESIGNED	DWS	DATE	03-21-05
SCALE			
CONTRACT NO. 02040-DNT-02-CN-EN SHEET 5 OF 5			