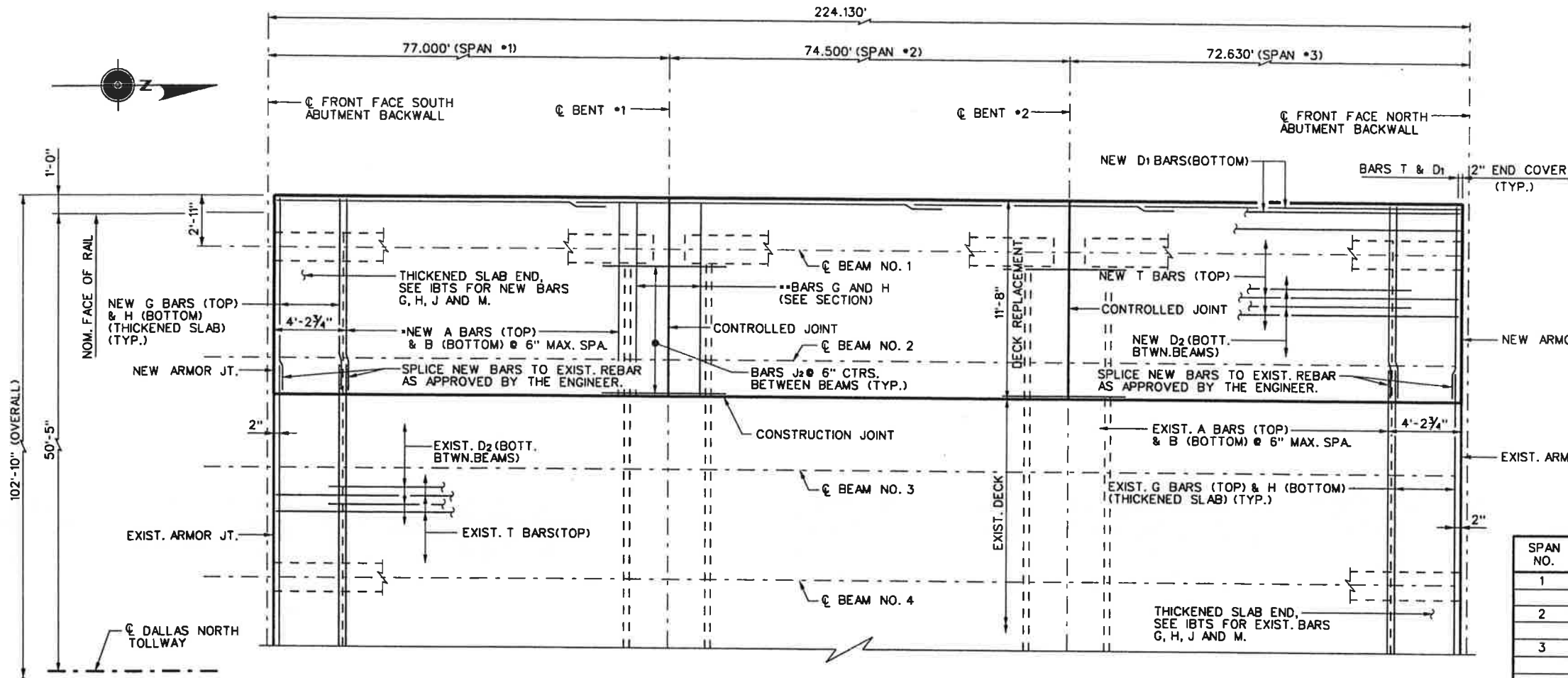


12:35:08 PM

BAR TABLE

BAR	SIZE
A	•5
B	•5
D	•5
G	•5
H	•5
J	•5
M	•5
T	•4



GENERAL NOTES:

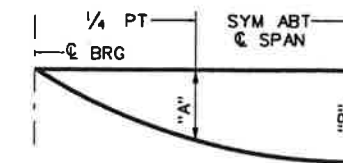
DESIGNED ACCORDING TO AASHTO 2002 STANDARD AND CURRENT INTERIM SPECIFICATIONS.
 SEE IBTS STANDARD FOR THICKENED SLAB END DETAILS AND QUANTITY ADJUSTMENTS.
 SEE PCP(C) OR PMDF(C) STANDARDS FOR DETAILS AND QUANTITY ADJUSTMENTS IF EITHER OF THESE OPTIONS ARE USED.
 ALL REINFORCING STEEL SHALL BE GRADE 60, EPOXY COATED.
 CONCRETE STRENGTH F'C = 4,000 PSI.
 BAR LAPS, WHERE REQUIRED, SHALL BE AS FOLLOWS:
 COATED - •4 = 2'-1"
 •5 = 2'-7"

SPAN NO.	BEAM NO.	"A" FT.	"B" FT.
1	1	0.058	0.082
	2	0.061	0.086
2	1	0.047	0.067
	2	0.050	0.070
3	1	0.058	0.082
	2	0.061	0.086

NOTE: BARS A AND B PLACED IN EACH SPAN @ 6" CTRS BETWEEN THICKENED SLABS AT ABUTMENTS AND BENTS.

NOTE: BARS G TO EXTEND TO EDGE OF DECK OVERHANG.

PLAN

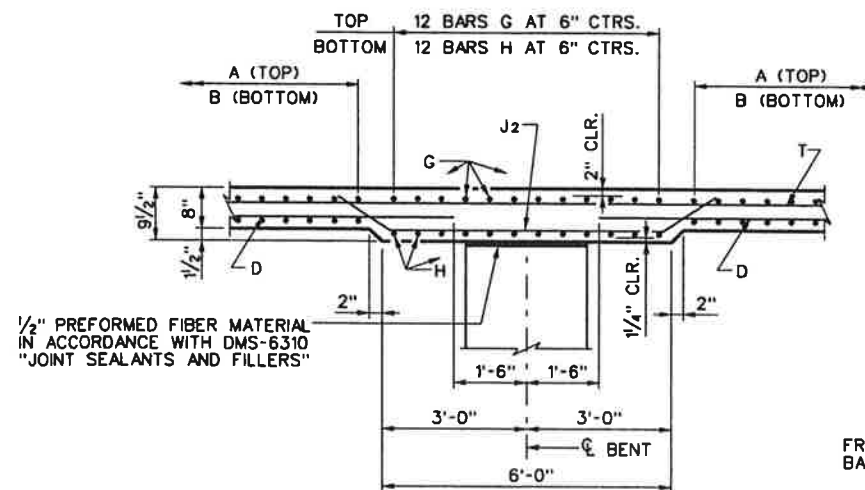


DEAD LOAD DEFLECTION DIAGRAM

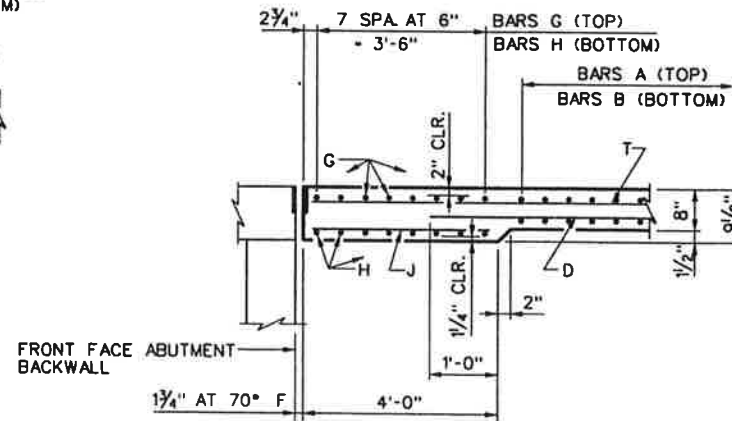
NOTE: DEFLECTIONS SHOWN ARE DUE TO CAST-IN-PLACE CONCRETE ONLY. (E = 5 X 10⁶ PSI) CALCULATED DEFLECTIONS SHOWN ARE THEORETICAL AND ACTUAL DIMENSIONS MAY BE LESS. DEFLECTIONS SHALL BE ADJUSTED BASED ON FIELD OBSERVATIONS.



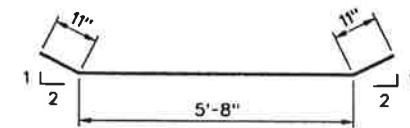
DWS
08/31/2005



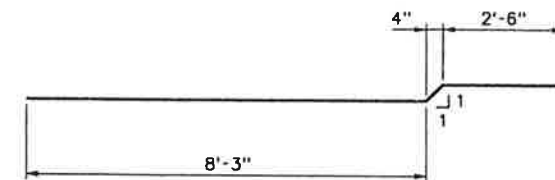
SLAB AT BENTS DETAIL
NTS



THICKENED SLAB END DETAIL
NTS



BARS J₂



BARS B

NO. DATE	REVISION	APPROV.
DALLAS NORTH TOLLWAY		
NTTA NORTH TEXAS TOLLWAY AUTHORITY		
PRESTRESSED CONCRETE I-BM SPAN (TYPE C) KELLER SPRINGS ROAD OVERPASS SHOULDER REPLACEMENT		
SHEET 5 OF 5		
PBSJ		STM 4 & 5 PLAN SET A
DRAWN JWC DATE 07-09-04	DESIGNED DWS DATE 07-09-04	
CHECKED DWS DATE 09-03-04	SCALE	
CONTRACT NO. 02040-DNT-02-CN-EN SHEET A170 OF A200		

8/30/2005 K:\PROJECTS\...2050401\DMT-STM_CIF231\Sheets\Bridg Modification Plans\KellerSprings\d07bbkss04.dgn