

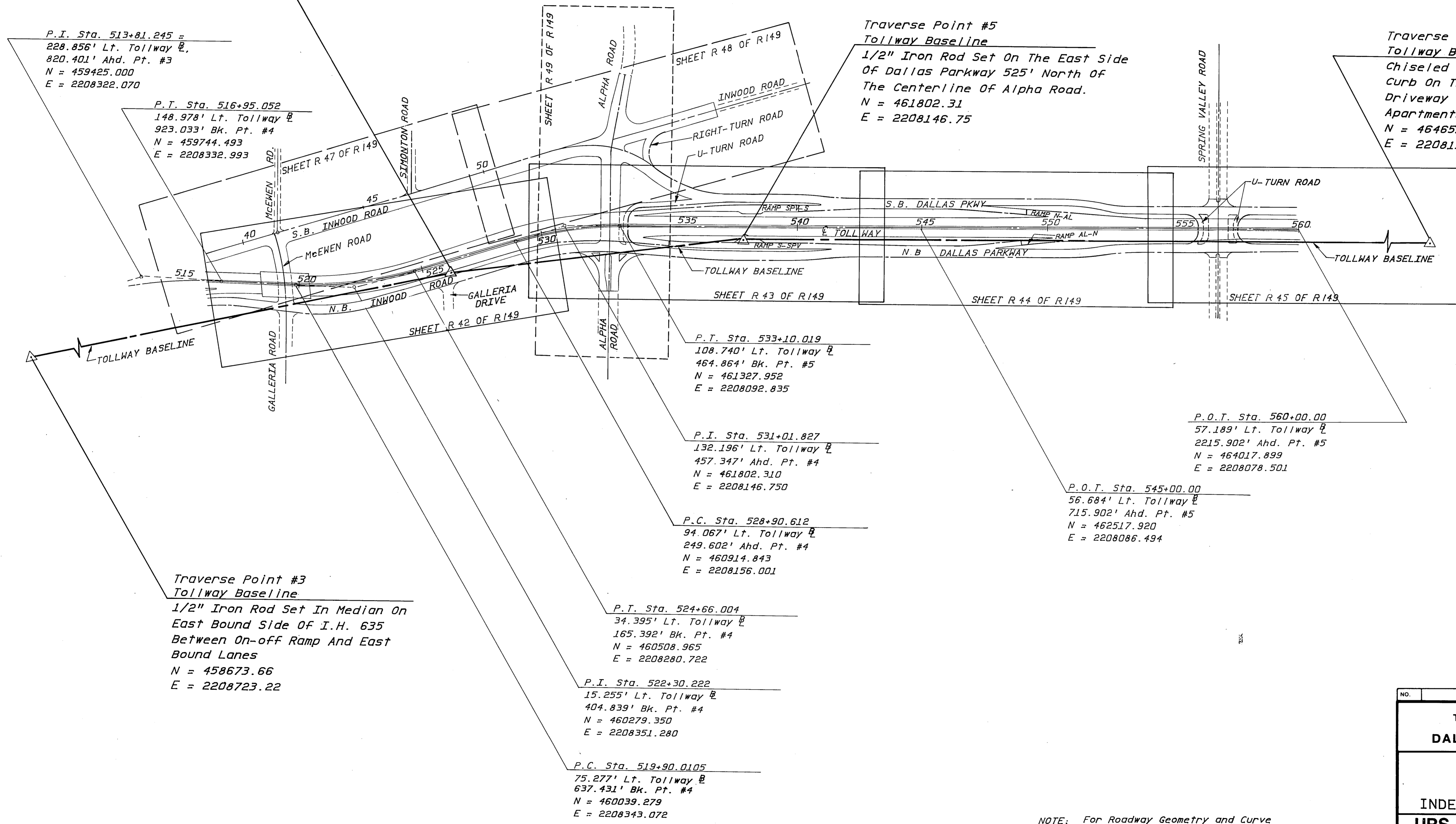
Traverse Point #4
 Tollway Baseline
 Chiseled "X" On East Side Of Dallas
 Parkway In A Driveway To The Marshall
 Field & Company Building At The Galleria.
 N = 460677.88
 E = 2208278.47

P.I. Sta. 513+81.245 =
 228.856' Lt. Tollway $\frac{1}{2}$,
 820.401' Ahd. Pt. #3
 N = 459425.000
 E = 2208322.070

P.T. Sta. 516+95.052
 148.978' Lt. Tollway $\frac{1}{2}$
 923.033' Bk. Pt. #4
 N = 459744.493
 E = 2208332.993

Traverse Point #5
 Tollway Baseline
 1/2" Iron Rod Set On The East Side
 Of Dallas Parkway 525' North Of
 The Centerline Of Alpha Road.
 N = 461802.31
 E = 2208146.75

Traverse Point #6
 Tollway Baseline
 Chiseled "X" On The Top Of The
 Curb On The North Side Of A
 Driveway To The Parkway Plaza
 Apartments #14222 Dallas Parkway
 N = 464651.22
 E = 2208132.53



P.T. Sta. 533+10.019
 108.740' Lt. Tollway $\frac{1}{2}$
 464.864' Bk. Pt. #5
 N = 461327.952
 E = 2208092.835

P.I. Sta. 531+01.827
 132.196' Lt. Tollway $\frac{1}{2}$
 457.347' Ahd. Pt. #4
 N = 461802.310
 E = 2208146.750

P.C. Sta. 528+90.612
 94.067' Lt. Tollway $\frac{1}{2}$
 249.602' Ahd. Pt. #4
 N = 460914.843
 E = 2208156.001

P.T. Sta. 524+66.004
 34.395' Lt. Tollway $\frac{1}{2}$
 165.392' Bk. Pt. #4
 N = 460508.965
 E = 2208280.722

P.I. Sta. 522+30.222
 15.255' Lt. Tollway $\frac{1}{2}$
 404.839' Bk. Pt. #4
 N = 460279.350
 E = 2208351.280

P.C. Sta. 519+90.0105
 75.277' Lt. Tollway $\frac{1}{2}$
 637.431' Bk. Pt. #4
 N = 460039.279
 E = 2208343.072

P.O.T. Sta. 560+00.00
 57.189' Lt. Tollway $\frac{1}{2}$
 2215.902' Ahd. Pt. #5
 N = 464017.899
 E = 2208078.501

P.O.T. Sta. 545+00.00
 56.684' Lt. Tollway $\frac{1}{2}$
 715.902' Ahd. Pt. #5
 N = 462517.920
 E = 2208086.494

Traverse Point #3
 Tollway Baseline
 1/2" Iron Rod Set In Median On
 East Bound Side Of I.H. 635
 Between On-off Ramp And East
 Bound Lanes
 N = 458673.66
 E = 2208723.22

NOTE: For Roadway Geometry and Curve
 Data, See Sheets No. R16 Thru R18.

AS BUILT PLANS

NO.	REVISION	BY	DATE
TEXAS TURNPIKE AUTHORITY DALLAS NORTH TOLLWAY			
CONTROL LAYOUT AND INDEX TO PLAN & PROFILES			
URS ENGINEERS DALLAS, TEXAS			SECTION <u>V</u>
DRAWN	M.M.	DATE	3/83
DESIGNED	N.N.	DATE	3/83
CHECKED	G.D.	DATE	3/83
SCALE	1"=200'		
CONTRACT NO. <u>DNT-113</u> SHEET <u>R-7</u> OF <u>R-149</u>			