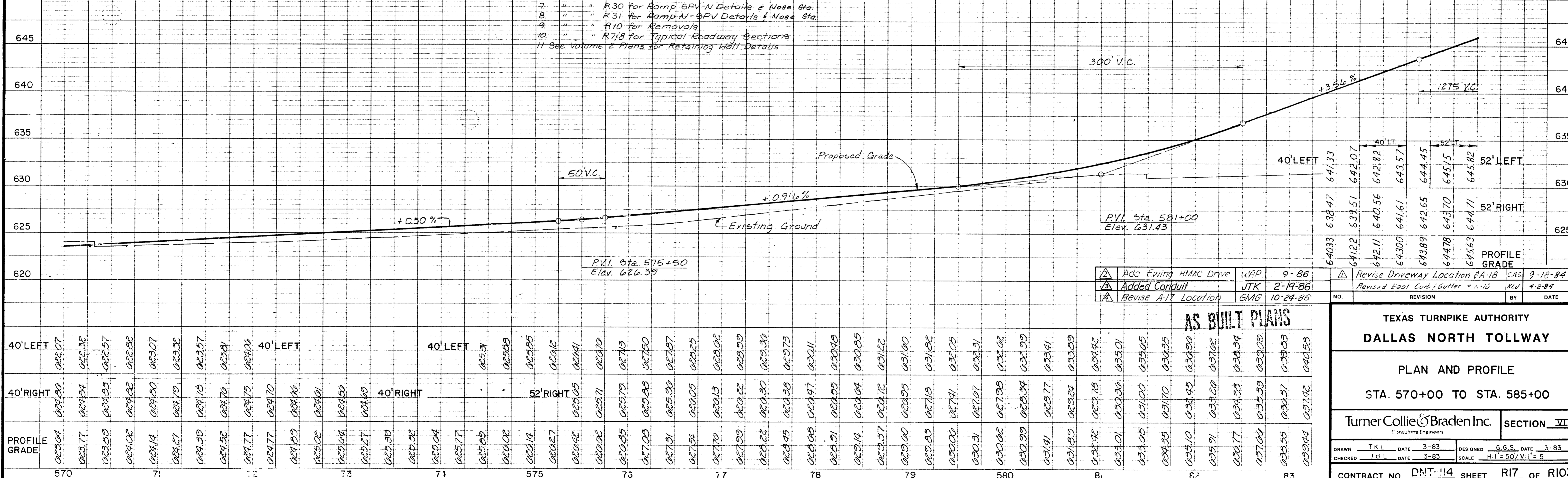


- LEGEND**
- (R2) Horizontal Curve Number
 - A21 Inlet Designation
 - Existing Light Pole
 - Existing Power/Telephone Pole
 - △ Existing Tree
 - ⊗ Existing Fence
 - ⊠ Existing Building
 - Storm Sewer Manhole

- NOTES**
1. See Sheet R23 for N.B. Dallas Pkwy Profile
 2. " " R25 for SB Dallas Pkwy Profile
 3. " " R27 for Ramp SPV-N Profile
 4. " " R27 for Ramp N-SPV Profile
 5. " " R4 for Additional Horizontal Geometrics
 6. " " R49 for Storm Sewer Plan
 7. " " R30 for Ramp SPV-N Details & Nose Sta.
 8. " " R31 for Ramp N-SPV Details & Nose Sta.
 9. " " R10 for Removals
 10. " " R718 for Typical Roadway Sections
 11. See Volume 2 Plans for Retaining Wall Details

PARKWAY II ASSOC. DALLAS TOLLWAY PARTNERS DALLAS TOLLWAY PARTNERS H.K. HUIE, JR.



△	Add Ewing HMA Drive	WAP	9-86
△	Added Conduit	JTK	2-19-86
△	Revise A-17 Location	GMG	10-24-86

△	Revise Driveway Location EA-18	CRS	9-18-84
△	Revised East Curb/Gutter + 1-10	MLV	4-2-84
NO.	REVISION	BY	DATE

AS BUILT PLANS

TEXAS TURNPIKE AUTHORITY
DALLAS NORTH TOLLWAY
 PLAN AND PROFILE
 STA. 570+00 TO STA. 585+00

TurnerCollie & Braden Inc. SECTION VI

DRAWN	T.K.L.	DATE	3-83	DESIGNED	G.G.S.	DATE	3-83
CHECKED	J.B.L.	DATE	3-83	SCALE	H:1 = 50' / V:1 = 5'		

CONTRACT NO. DNT-114 SHEET R17 OF R103