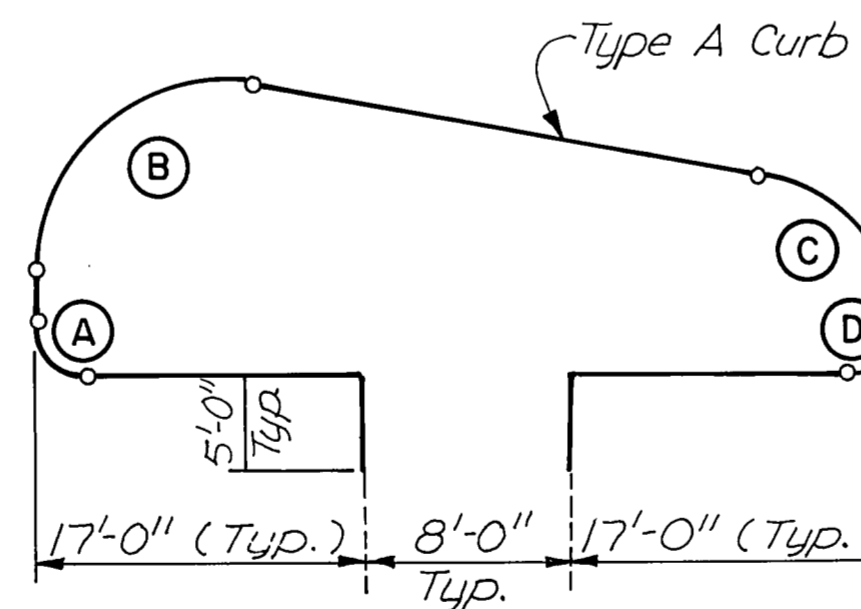


LEGEND

- Type A Curb
- 2' Curb & Gutter
- ▨ Remove Existing Concrete Pavement
- ▩ Remove and Replace 6" Concrete Pavement
- ▧ New 6" Concrete Pavement
- ▤ Remove Ramp and Replace with 4" Sidewalk

GENERAL NOTES:

New parking lot pavement shall be 6" reinforced concrete with No. 3 Bars @ 24" on center, each way. All new islands and medians shall be backfilled with suitable earth. Saw cut at existing parking lot islands shall be 2'-0" from face of existing curb. 2'-0" of existing reinforcing shall remain in place beyond the saw cut. The existing reinforcing shall be cleaned and tied to the new reinforcing prior to concrete placement. New sidewalk shall be 4" reinforced concrete with No. 3 bars @ 24" on centers, each way. 1/2" preformed joint material shall be provided between the back of curb & gutter and sidewalk. Handicap ramp shall be concrete and shall taper from top of curb and gutter to a height of 3/8" over a length of 6'-0". The width of the ramp shall be 4'-0".



PARKING ISLAND PLAN LAYOUT
Not to Scale

PARKING ISLAND CURVE RADII				
ISLAND NO.	①	②	③	
CURVE LETTER				
(A)	2.5'	2.5'	2.5'	
(B)	10.0'	8.0'	12.5'	
(C)	8.0'	10.0'	37.5'	
(D)	2.5'	2.5'	2.5'	

SPECIAL NOTE ▽
Existing Handicap Ramp(s) shall be removed and replaced with 4" concrete sidewalk.

Add Special Note		WAP G-14-85	
NO.	REVISION	BY	DATE
TEXAS TURNPIKE AUTHORITY DALLAS NORTH TOLLWAY			
SAKOWITZ VILLAGE PARKING LOT RENOVATIONS			
HNTB <small>HOWARD NEEDLES TAMMEN & BERGENDOFF</small>		SECTION VI	
<small>DRAWN</small> W.A.P. <small>DATE</small> 3-27-85 <small>CHECKED</small> G.A.L. <small>DATE</small> 3-28-85	<small>DESIGNED</small> H.K.M. <small>DATE</small> 3-26-85 <small>SCALE</small> 1"=50'		
CONTRACT NO. DNT-114 SHEET R19A OF _____			

AS BUILT PLANS