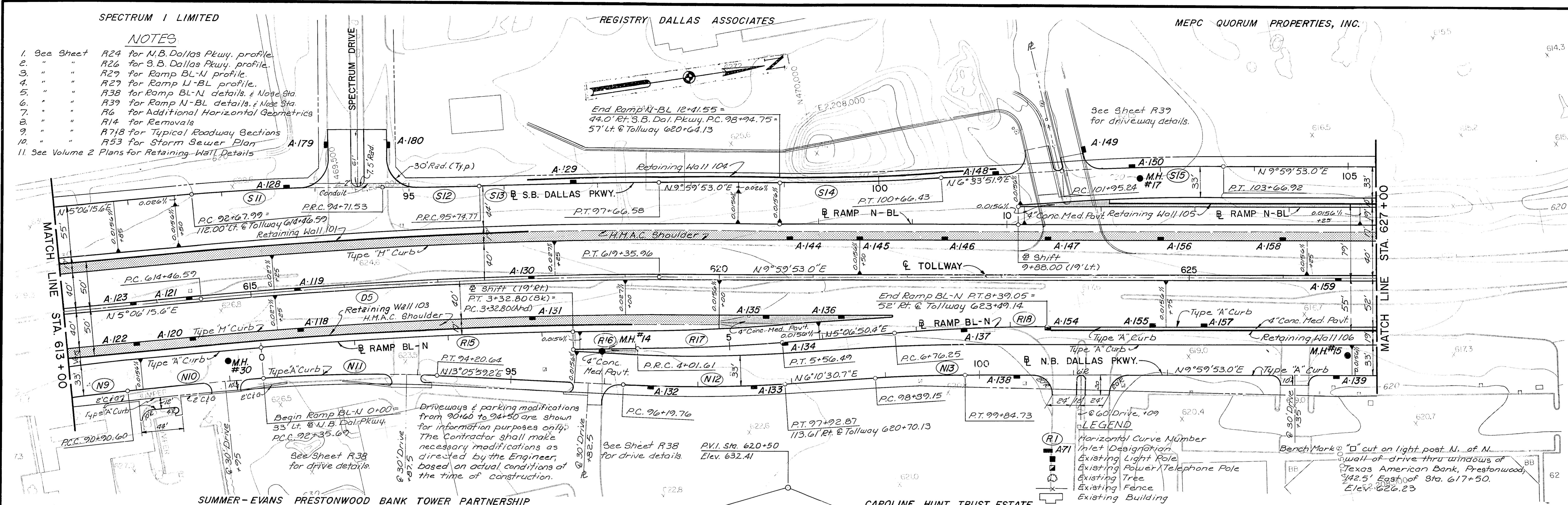


NOTES

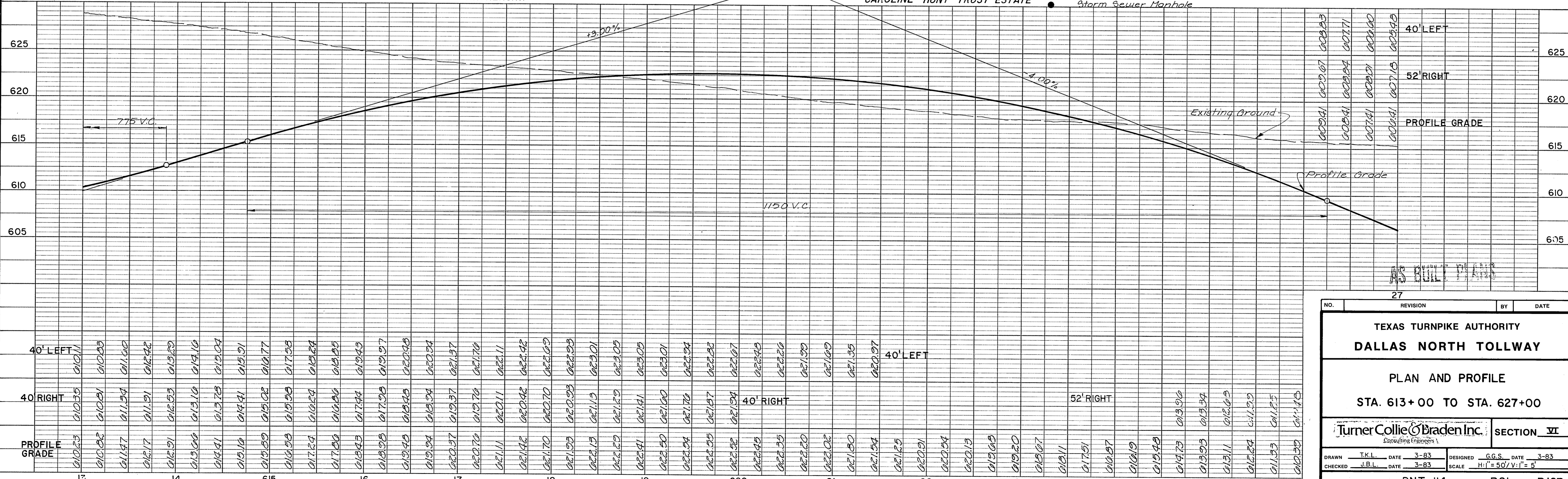
1. See Sheet R24 for N.B. Dallas Pkwy. profile
2. " " " " R26 for S.B. Dallas Pkwy. profile
3. " " " " R27 for Ramp BL-N profile
4. " " " " R29 for Ramp U-BL profile
5. " " " " R38 for Ramp BL-N details, & Nose Sta
6. " " " " R39 for Ramp N-BL details, & Nose Sta
7. " " " " R6 for Additional Horizontal Geometrics
8. " " " " R14 for Removals
9. " " " " R718 for Typical Roadway Sections
10. " " " " R53 for Storm Sewer Plan
11. See Volume 2 Plans for Retaining-Wall Details



**LEGEND**

- (R1) Horizontal Curve Number
- (A71) Inlet Designation
- Existing Light Pole
- Existing Power/Telephone Pole
- Existing Tree
- Existing Fence
- Existing Building
- Storm Sewer Manhole

Bench Mark "D" cut on light post N. of N. wall-of-drive thru windows of Texas American Bank, Prestonwood, 1/2 S. East of Sta. 617+50. Elev. 622.23



NO. 27 REVISION BY DATE

TEXAS TURNPIKE AUTHORITY  
DALLAS NORTH TOLLWAY

PLAN AND PROFILE  
STA. 613+00 TO STA. 627+00

Turner Collier & Braden Inc.  
SECTION VII

DRAWN T.K.L. DATE 3-83 DESIGNED G.G.S. DATE 3-83  
CHECKED J.B.L. DATE 3-83 SCALE H:V = 50:1

CONTRACT NO. DNT-114 SHEET R21 OF R103