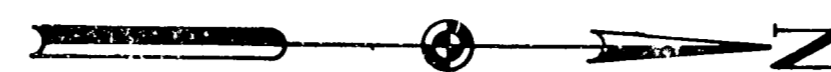


PARVAL, INC.

HENRY BUTTS, JR.

S. FINLEY EWING, JR.

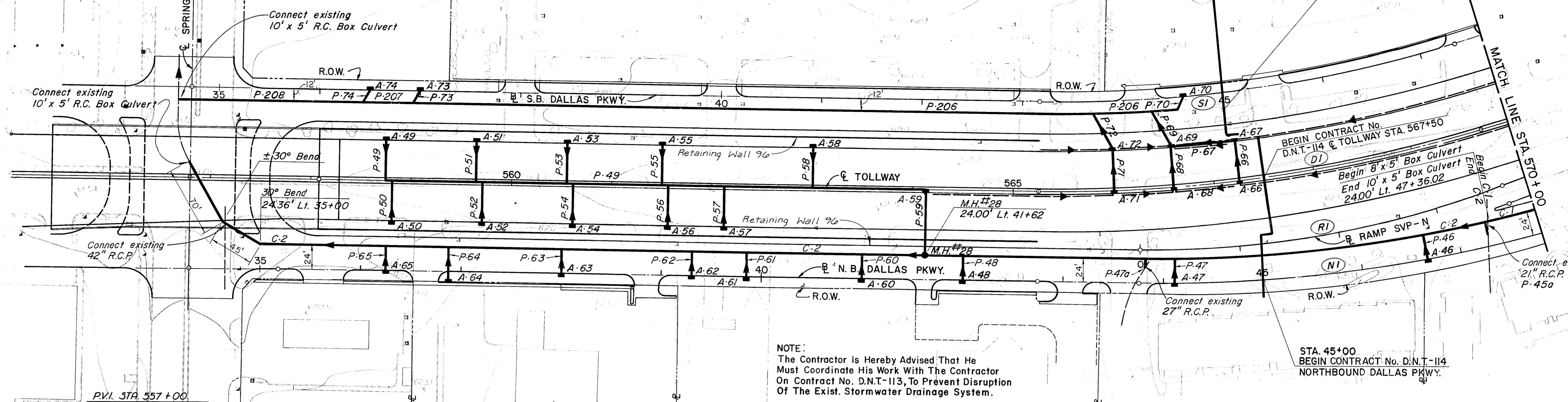


CONTRACT No. D.N.T.-113 BY OTHERS
BEGIN CONTRACT No. D.N.T.-114

STA. 45+00
BEGIN CONTRACT No. D.N.T.-114
SOUTHBOUND DALLAS PKWY.

BEGIN CONTRACT No. D.N.T.-114 & TOLLWAY STA. 567+50
Begin 8' x 5' Box Culvert
End 10' x 5' Box Culvert
2400' Lt. 47+36.02

STA. 45+00
BEGIN CONTRACT No. D.N.T.-114
NORTHBOUND DALLAS PKWY.



NOTE:
The Contractor is hereby advised that he must coordinate his work with the contractor on contract No. D.N.T.-113, to prevent disruption of the exist. stormwater drainage system.

P.V.I. STA. 557+00
Elev. 650.82

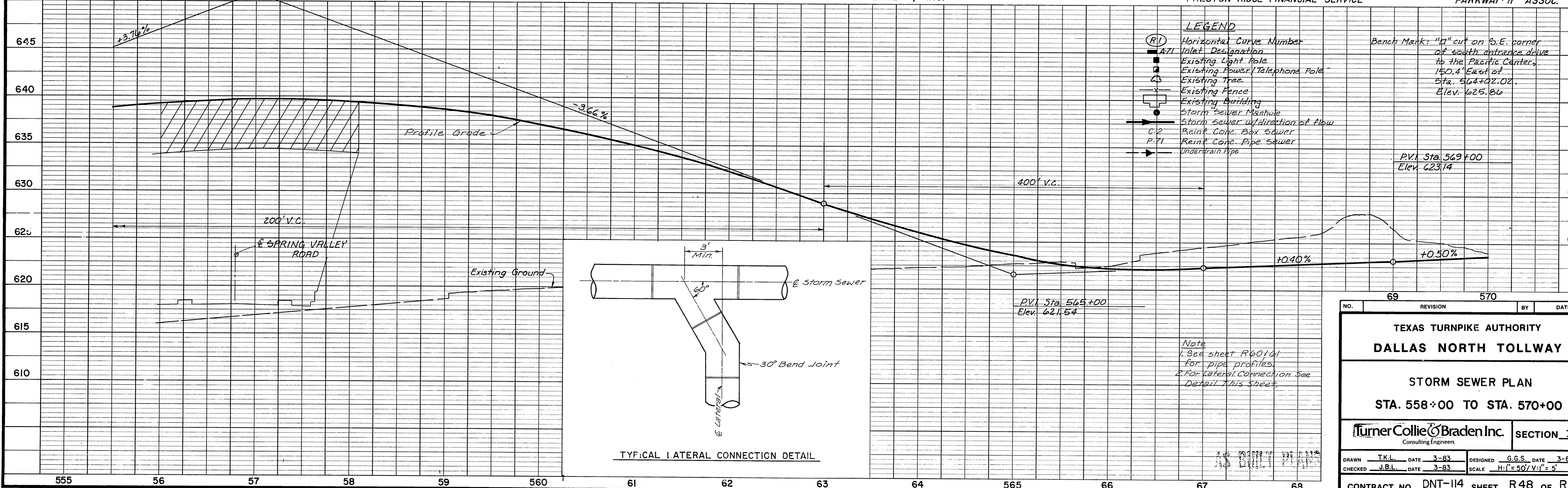
EXXON CORPORATION

DALE BULLOUGH & SAM McGLASSON

DEFENDER, INC.

PRESTON RIDGE FINANCIAL SERVICE

PARKWAY II ASSOC.



- LEGEND**
- (RI) Horizontal Curve Number
 - ▲ Inlet Designation
 - Existing Light Pole
 - ⊕ Existing Power/Telephone Pole
 - ⊗ Existing Tree
 - ⊘ Existing Fence
 - ⊠ Existing Building
 - Storm Sewer Manhole
 - Storm Sewer w/direction of flow
 - C-2 Reinf. Conc. Box Sewer
 - P-71 Reinf. Conc. Pipe Sewer
 - Underdrain Pipe

Bench Mark: "1" cut on S.E. corner of south entrance drive to the Pacific Center, 150.4' East of Sta. 564+02.02, Elev. 625.86

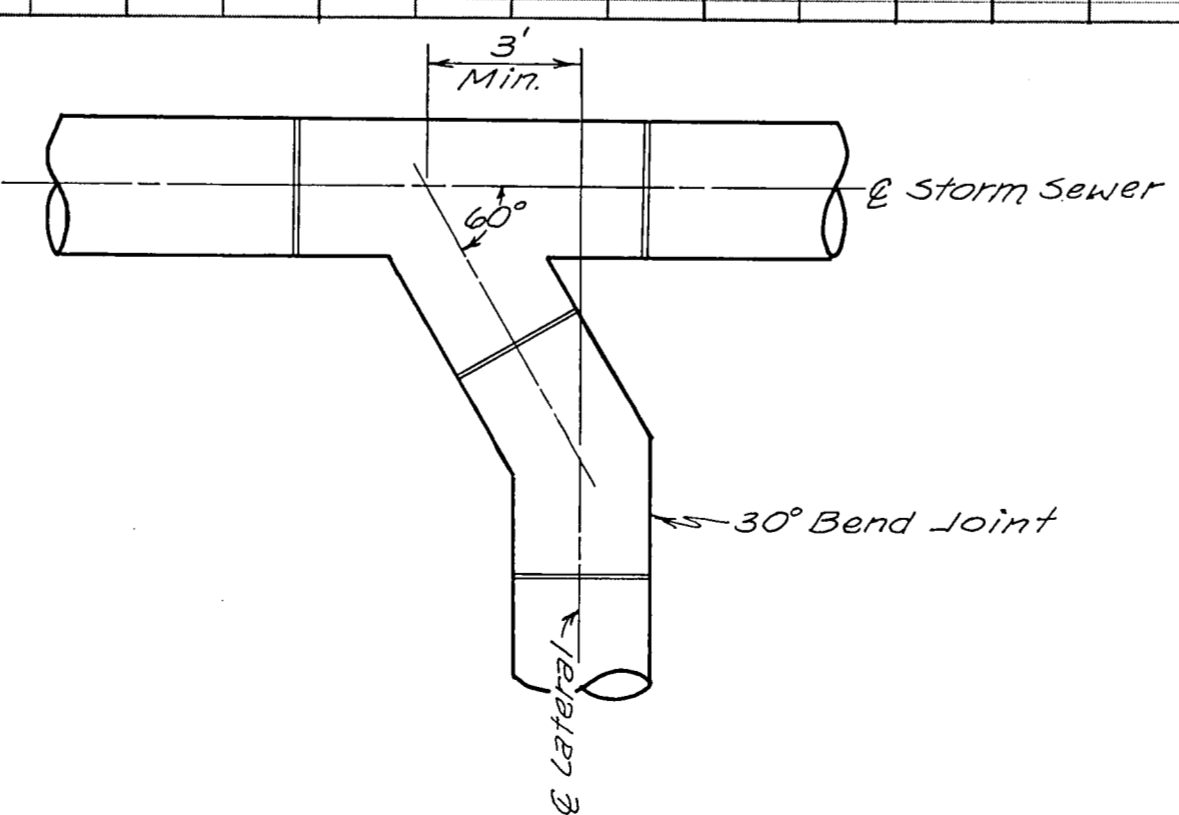
P.V.I. Sta. 569+00
Elev. 623.14

400' V.C.

200' V.C.

Spring Valley Road

Existing Ground



TYPICAL LATERAL CONNECTION DETAIL

Note
1. See sheet R601d1 for pipe profiles.
2. For lateral connection see Detail this sheet.

NO.	69	REVISION	570	BY	DATE
TEXAS TURNPIKE AUTHORITY					
DALLAS NORTH TOLLWAY					
STORM SEWER PLAN					
STA. 558+00 TO STA. 570+00					
Turner Collie & Braden Inc. Consulting Engineers				SECTION VI	
DRAWN	T.K.L.	DATE	3-83	DESIGNED	G.G.S. DATE 3-83
CHECKED	J.B.L.	DATE	3-83	SCALE	H:1" = 50' V:1" = 5'
CONTRACT NO. DNT-114 SHEET R48 OF R103					