

Connect P-202 to existing inlet. No separate payment will be made for connection to existing inlet.

P-201 Curve Data
PI 12.00' Rt. @ S.B. Dallas Pkwy. 68+56.85
R = 111.00'
Δ = 30°00'
T = 29.74'
L = 58.12'

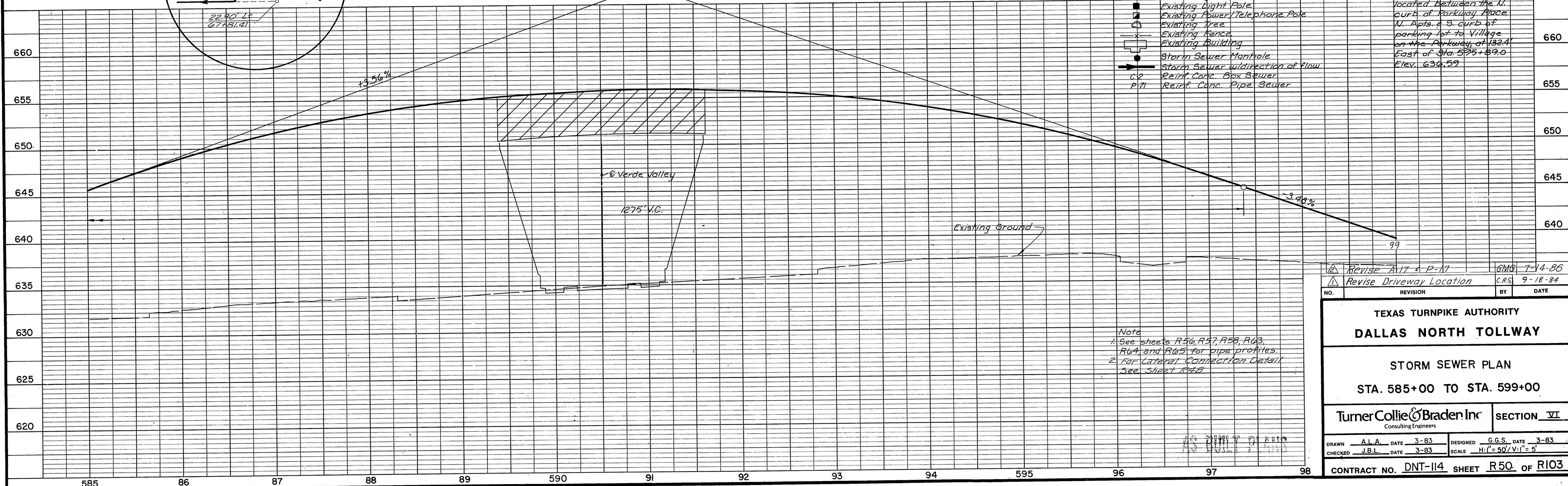
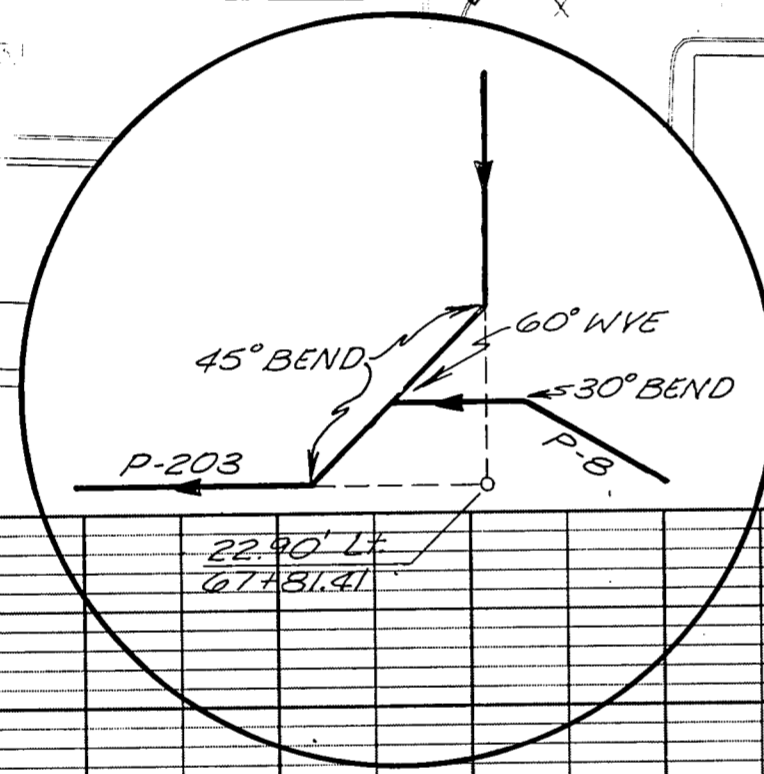
P-200 Curve Data
PI 12.00' Rt. @ S.B. Dallas Pkwy. 73+63.78
R = 111.00'
Δ = 30°00'
T = 29.74'
L = 58.12'

End PI. 17.00' Lt. 74+14.00

P-101 Curve Data
PI 28.00' Lt. @ N.B. Dallas Pkwy. 75+25.36
R = 100.00'
Δ = 15°00'
T = 13.10'
L = 26.18'

MATCH LINE STA. 585+00

MATCH LINE STA. 599+00



- LEGEND**
- (R1) Horizontal Curve Number
 - A71 Inlet Designation
 - Existing Light Pole
 - Existing Power/Telephone Pole
 - Existing Tree
 - Existing Fence
 - Existing Building
 - Storm Sewer Manhole
 - Storm Sewer undirection of flow
 - C2 Reinf. Conc. Box Sewer
 - P-71 Reinf. Conc. Pipe Sewer

Bench Mark: Top R.R. spike in W. face of transformer pole located between the N. curb of Parkway Place N. Apts. & S. curb of parking lot to Village on the Parkway at 132A East of Sta. 595+89.0 Elev. 636.59

Note
1. See sheets R56, R57, R58, R63, R64, and R65 for pipe profiles.
2. For Lateral Connection Details See Sheet R48

NO.	REVISION	BY	DATE
1	Revise A71 & P-17	GMO	7-14-86
2	Revise Driveway Location	C.R.S.	9-18-84

TEXAS TURNPIKE AUTHORITY
DALLAS NORTH TOLLWAY

STORM SEWER PLAN
STA. 585+00 TO STA. 599+00

TurnerCollieBraden Inc
Consulting Engineers

SECTION VI

DRAWN A.L.A. DATE 3-83	DESIGNED G.G.S. DATE 3-83
CHECKED J.B.L. DATE 3-83	SCALE H:1" = 50' V:1" = 5'

CONTRACT NO. DNT-114 SHEET R50 OF R103