

HOTEL INVESTORS TRUST

FIRST TEXAS SAVINGS ASSOC.

PLAZA AT THE QUORUM ASSOC.

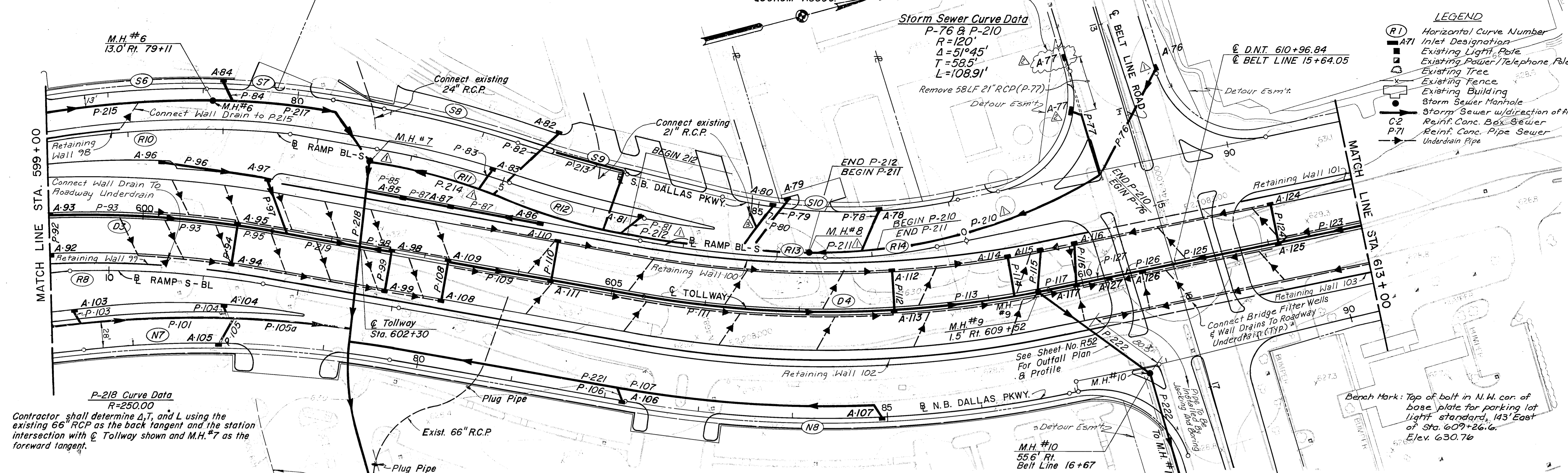
Remove Previously Constructed Inlet

Storm Sewer Curve Data
P-76 & P-210
R=120'
Δ=51°45'
T=58.5'
L=108.91'

- LEGEND**
- (R1) Horizontal Curve Number
 - ▲ A71 Inlet Designation
 - Existing Light Pole
 - Existing Power/Telephone Pole
 - Existing Tree
 - Existing Fence
 - Existing Building
 - Storm Sewer Manhole
 - Storm Sewer w/direction of flow
 - Reinf. Conc. Box Sewer
 - Reinf. Conc. Pipe Sewer
 - Underdrain Pipe

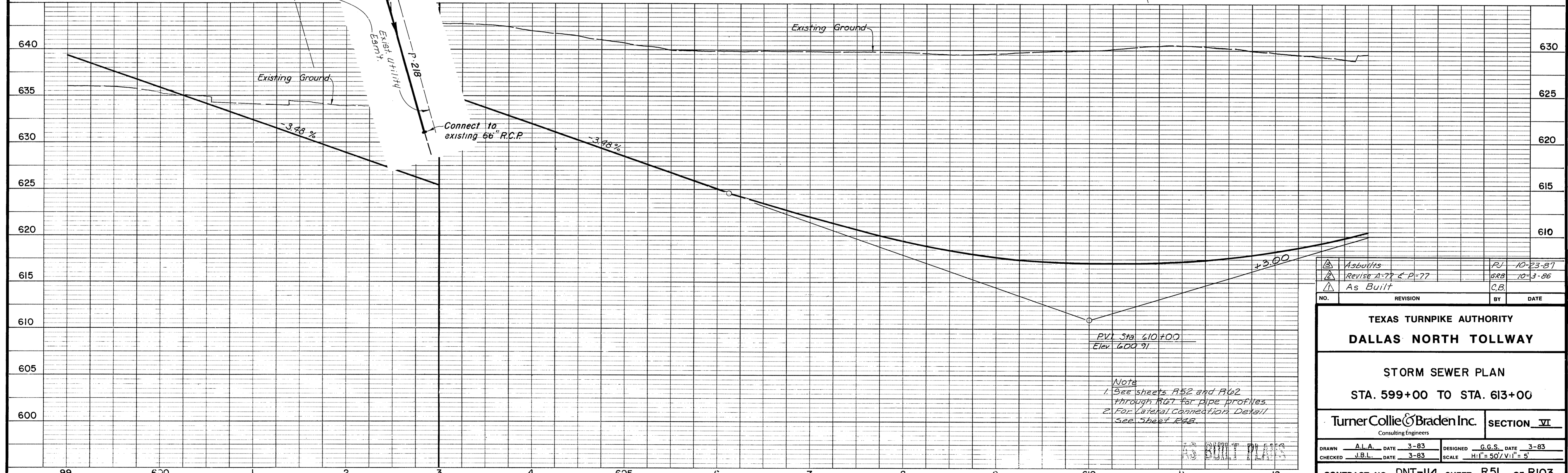
MATCH LINE STA. 599+00

MATCH LINE STA. 613+00



P-218 Curve Data
R=250.00
Contractor shall determine Δ, T, and L using the existing 66" RCP as the back tangent and the station intersection with Q Tollway shown and M.H. #7 as the forward tangent.

Bench Mark: Top of bolt in N.W. cor. of base plate for parking lot light standard, 143' East of Sta. 609+26.6, Elev. 630.76



As Built	PL	10-23-87	
Revise A-77 & P-77	GRB	10-3-86	
As Built	C.B.		
NO.	REVISION	BY	DATE

TEXAS TURNPIKE AUTHORITY
DALLAS NORTH TOLLWAY

STORM SEWER PLAN
STA. 599+00 TO STA. 613+00

TurnerCollieBraden Inc. **SECTION VI**
Consulting Engineers

DRAWN A.L.A. DATE 3-83	DESIGNED G.G.S. DATE 3-83
CHECKED J.B.L. DATE 3-83	SCALE H:1"=50'/V:1"=5'

CONTRACT NO. DNT-114 SHEET R51 OF R103

Note
1. See sheets R52 and R62 through R67 for pipe profiles.
2. For Lateral Connection Detail See Sheet R48.

AS BUILT PLANS