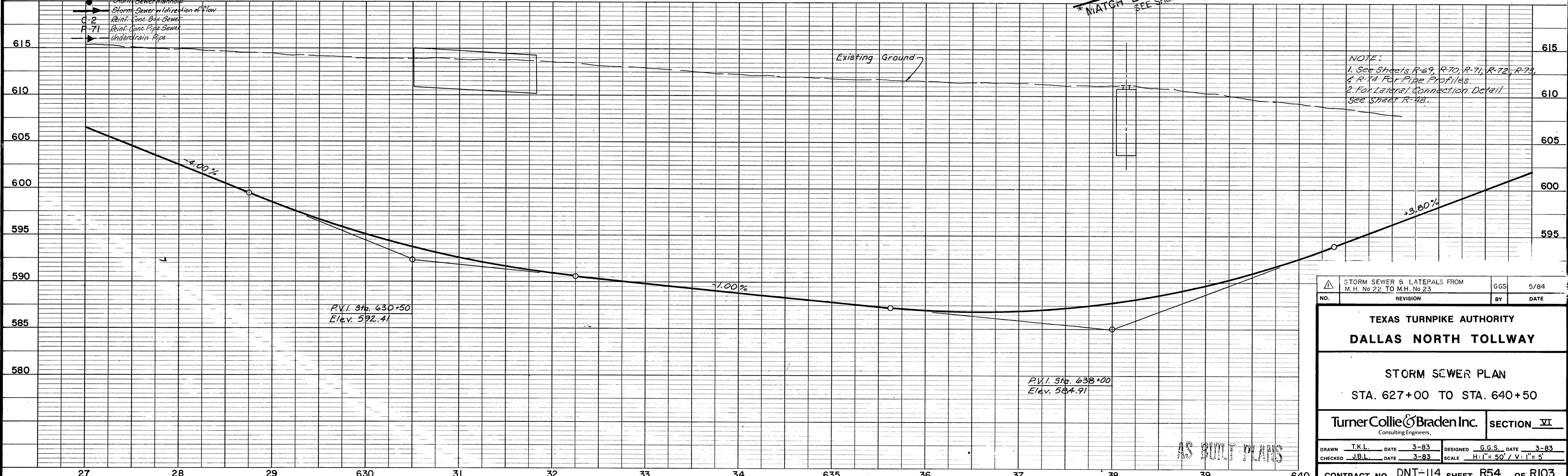


- LEGEND**
- (R1) Horizontal Curve Number
 - A-71 Inlet Designation
 - Existing Light Pole
 - Existing Power/Telephone Pole
 - Existing Tree
 - Existing Fence
 - Existing Building
 - Storm Sewer Manhole
 - Storm Sewer Direction of Flow
 - Reinf. Conc. Box Sewer
 - Reinf. Conc. Pipe Sewer
 - Underdrain Pipe



NOTE:
 1. See Sheets R-69, R-70, R-71, R-72, R-73, & R-74 For Pipe Profiles.
 2. For Lateral Connection Detail See Sheet R-48.

| | | | |
|--|-----------|------------------------------|------------|
| STORM SEWER & LATERALS FROM M.H. No 22 TO M.H. No 23 | | GGS | 5/84 |
| NO. | REVISION | BY | DATE |
| TEXAS TURNPIKE AUTHORITY | | | |
| DALLAS NORTH TOLLWAY | | | |
| STORM SEWER PLAN STA. 627+00 TO STA. 640+50 | | | |
| TurnerCollie & Braden Inc. Consulting Engineers. | | | SECTION VI |
| DRAWN T.K.L. | DATE 3-83 | DESIGNED G.G.S. | DATE 3-83 |
| CHECKED J.B.L. | DATE 3-83 | SCALE H:1" = 50' / V:1" = 5' | |
| CONTRACT NO. DNT-114 SHEET R54 OF R103 | | | |

AS BUILT PLANS