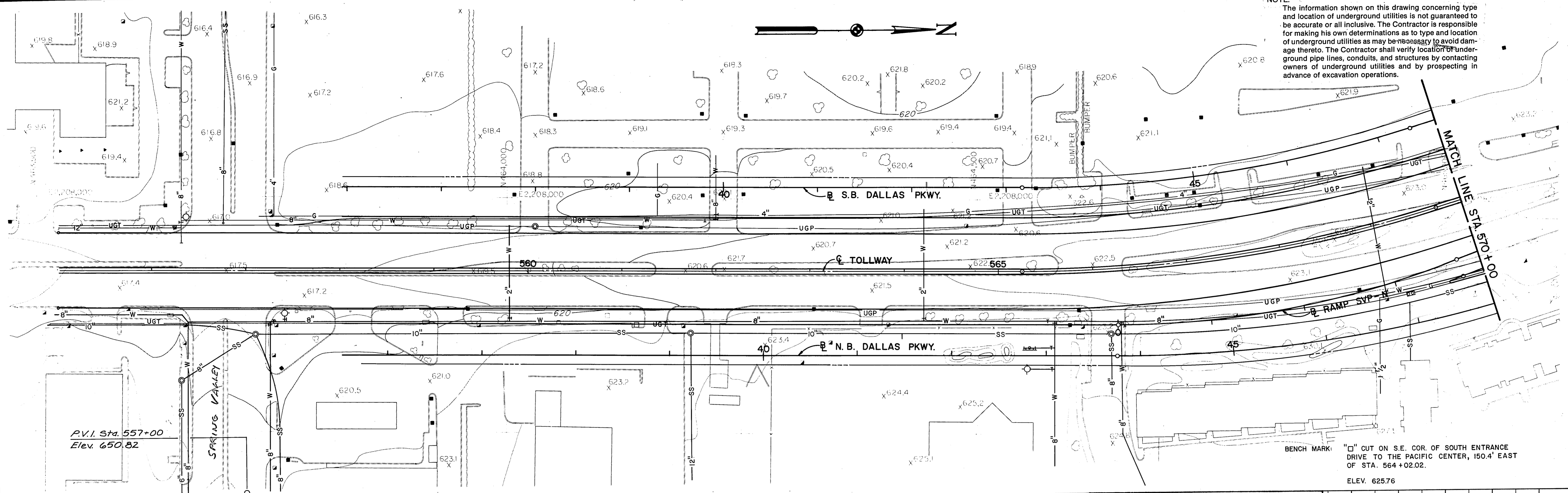
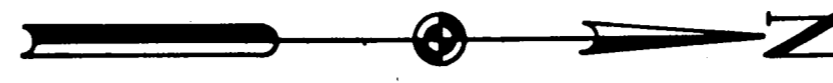
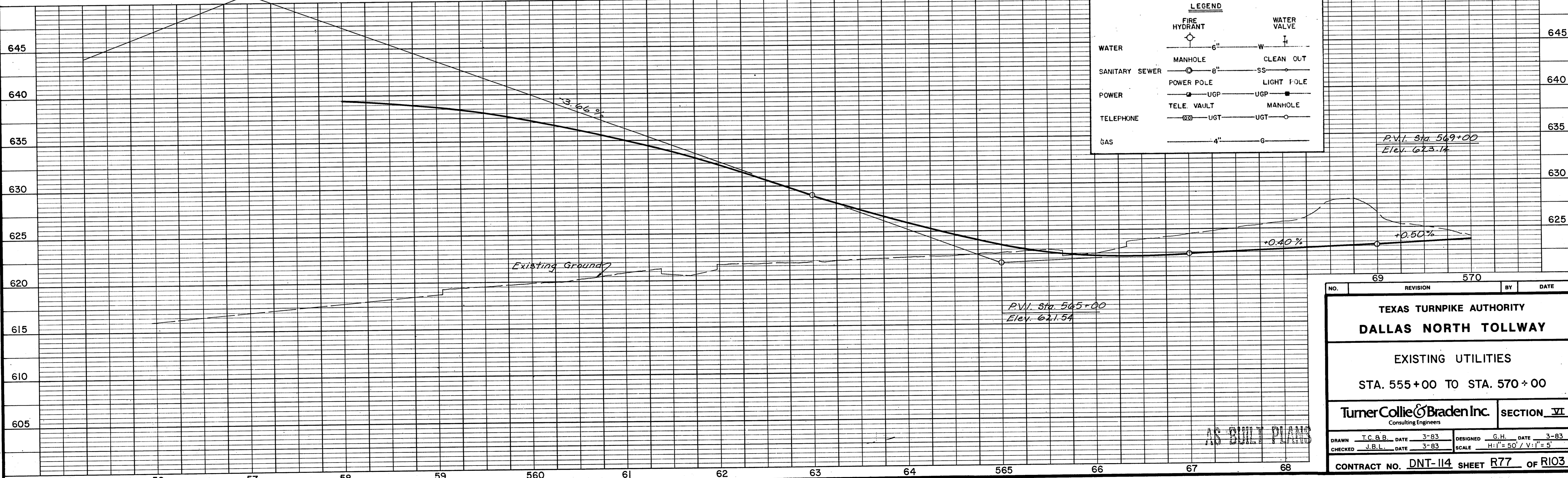


NOTE:
The information shown on this drawing concerning type and location of underground utilities is not guaranteed to be accurate or all inclusive. The Contractor is responsible for making his own determinations as to type and location of underground utilities as may be necessary to avoid damage thereto. The Contractor shall verify location of underground pipe lines, conduits, and structures by contacting owners of underground utilities and by prospecting in advance of excavation operations.



P.V.I. Sta. 557+00
Elev. 650.82

BENCH MARK: "□" CUT ON S.E. COR. OF SOUTH ENTRANCE DRIVE TO THE PACIFIC CENTER, 150.4' EAST OF STA. 564+02.02.
ELEV. 625.76



LEGEND	
FIRE HYDRANT	WATER VALVE
WATER 6" W	CLEAN OUT
SANITARY SEWER 8" SS	LIGHT POLE
POWER UGP	MANHOLE
TELEPHONE UGT	UGP
GAS 4" G	UGT

P.V.I. Sta. 569+00
Elev. 623.14

NO.	69	REVISION	570	BY	DATE
TEXAS TURNPIKE AUTHORITY					
DALLAS NORTH TOLLWAY					
EXISTING UTILITIES					
STA. 555+00 TO STA. 570+00					
Turner Collier & Braden Inc. Consulting Engineers					SECTION VI
DRAWN	T.C.B.B.	DATE	3-83	DESIGNED	G.H.
CHECKED	J.B.L.	DATE	3-83	SCALE	H:1"=50' / V:1"=5'
CONTRACT NO. DNT-114 SHEET R77 OF R103					

AS BUILT PLANS