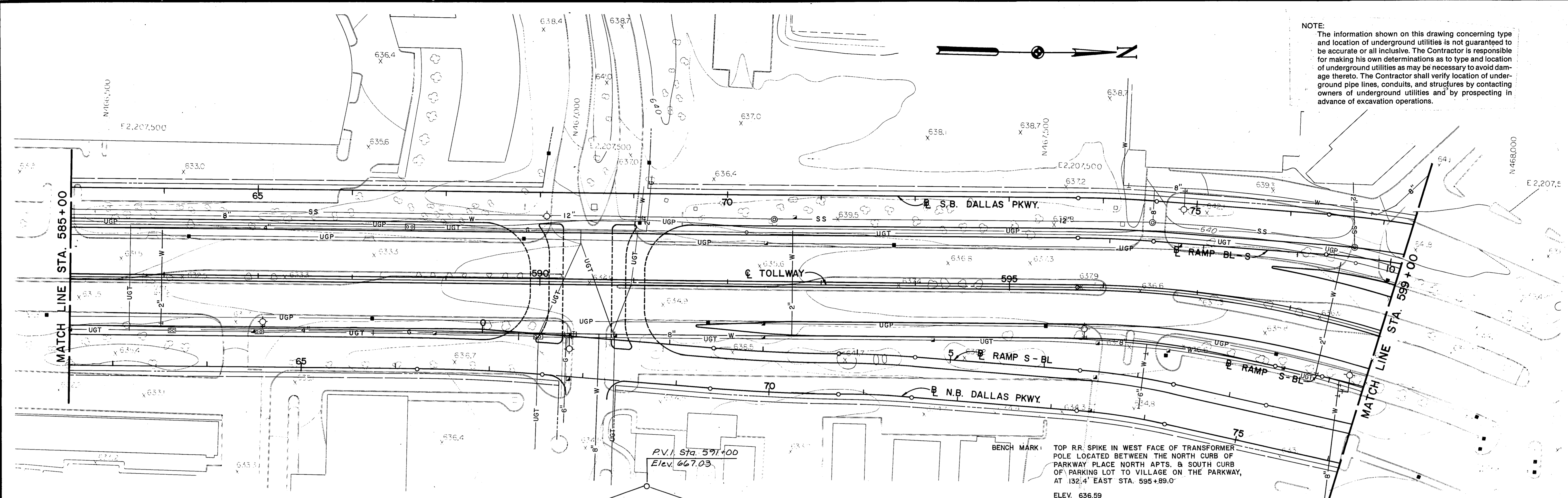
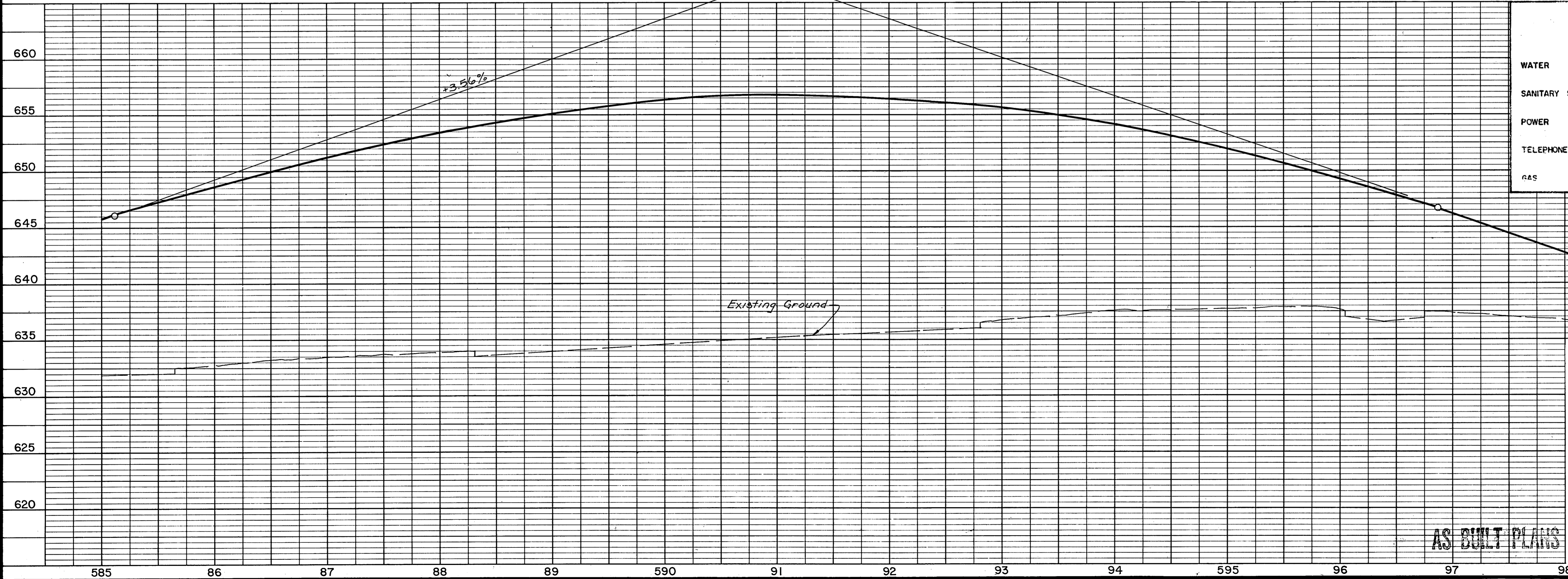


NOTE:
 The information shown on this drawing concerning type and location of underground utilities is not guaranteed to be accurate or all inclusive. The Contractor is responsible for making his own determinations as to type and location of underground utilities as may be necessary to avoid damage thereto. The Contractor shall verify location of underground pipe lines, conduits, and structures by contacting owners of underground utilities and by prospecting in advance of excavation operations.



P.V.I. Sta. 591+00
 Elev. 667.03

BENCH MARK: TOP RR. SPIKE IN WEST FACE OF TRANSFORMER POLE LOCATED BETWEEN THE NORTH CURB OF PARKWAY PLACE NORTH VILLAGE & SOUTH CURB OF PARKING LOT TO VILLAGE ON THE PARKWAY, AT 132.4' EAST STA. 595+89.0'
 ELEV. 636.59



| LEGEND | |
|--------------|-------------|
| FIRE HYDRANT | WATER VALVE |
| MANHOLE | CLEAN OUT |
| POWER POLE | LIGHT POLE |
| TELE. VAULT | MANHOLE |
| TELEPHONE | UGT |
| GAS | UGT |

| | | | |
|--|---|---|-------------------|
| NO. | REVISION | BY | DATE |
| TEXAS TURNPIKE AUTHORITY DALLAS NORTH TOLLWAY | | | |
| EXISTING UTILITIES STA. 585+00 TO STA. 599+00 | | | |
| TurnerCollie & Braden Inc. Consulting Engineers | | | SECTION VI |
| DRAWN T.C.B.B. DATE 3-83 CHECKED J.B.L. DATE 3-83 | DESIGNED G.H. DATE 3-83 SCALE H:1"=50' / V:1"=5' | CONTRACT NO. DNT-114 SHEET R79 OF R103 | |

AS BUILT PLANS