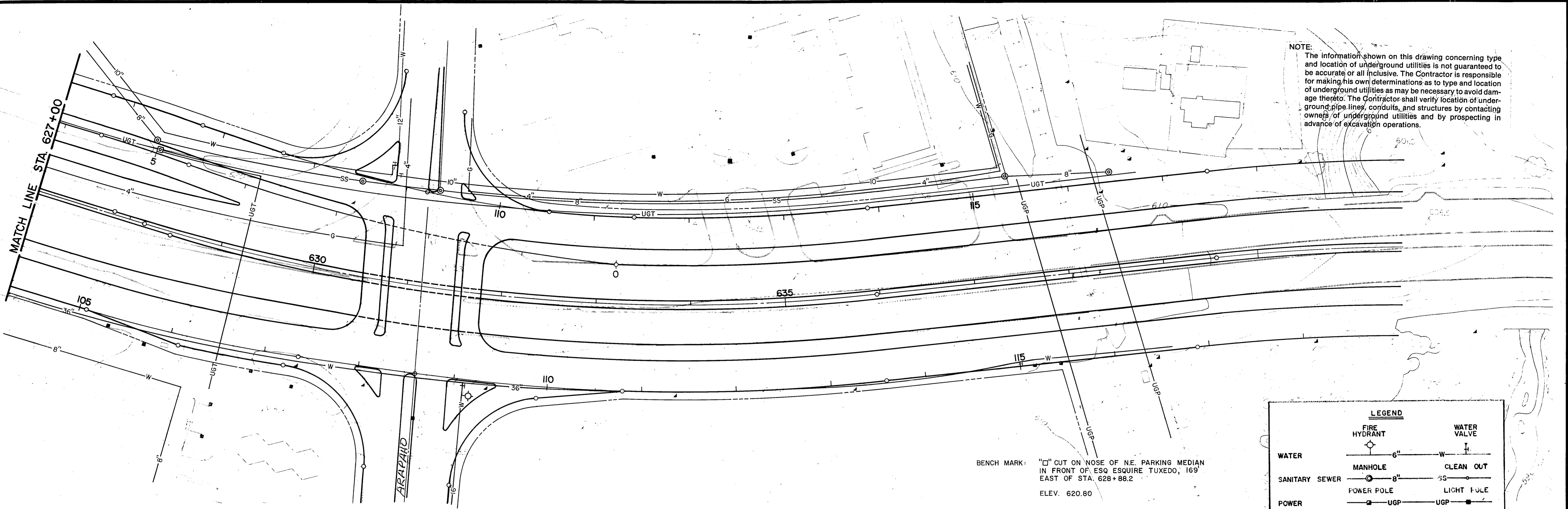
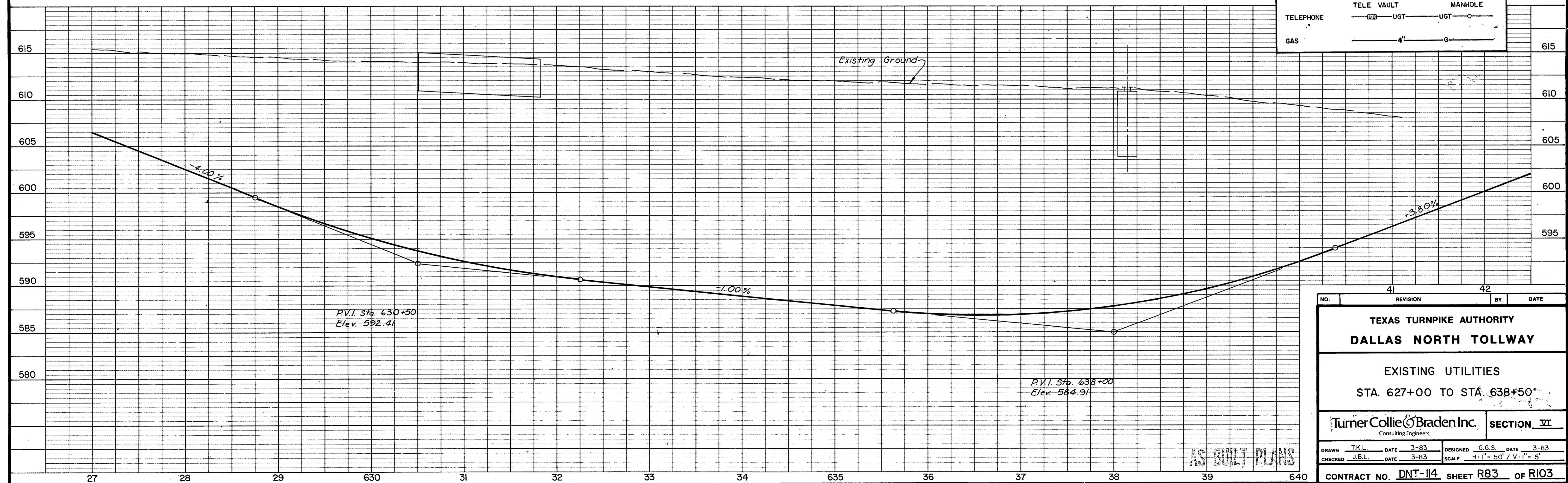


NOTE:
The information shown on this drawing concerning type and location of underground utilities is not guaranteed to be accurate or all inclusive. The Contractor is responsible for making his own determinations as to type and location of underground utilities as may be necessary to avoid damage thereto. The Contractor shall verify location of underground pipe lines, conduits, and structures by contacting owners of underground utilities and by prospecting in advance of excavation operations.



BENCH MARK: "□" CUT ON NOSE OF N.E. PARKING MEDIAN
IN FRONT OF ESQ ESQUIRE TUXEDO, 169
EAST OF STA. 628+88.2
ELEV. 620.80

LEGEND	
FIRE HYDRANT	WATER VALVE
MANHOLE	CLEAN OUT
POWER POLE	LIGHT POLE
TELE. VAULT	MANHOLE
GAS	



NO.	REVISION	BY	DATE
41			
42			

TEXAS TURNPIKE AUTHORITY
DALLAS NORTH TOLLWAY

EXISTING UTILITIES
STA. 627+00 TO STA. 638+50

Turner Collie & Braden Inc. **SECTION VI**
Consulting Engineers

DRAWN	TKL.	DATE	3-83	DESIGNED	G.G.S.	DATE	3-83
CHECKED	J.B.L.	DATE	3-83	SCALE	H: 1" = 50' / V: 1" = 5'		

CONTRACT NO. **DNT-114** SHEET **R83** OF **R103**

AS BUILT PLANS