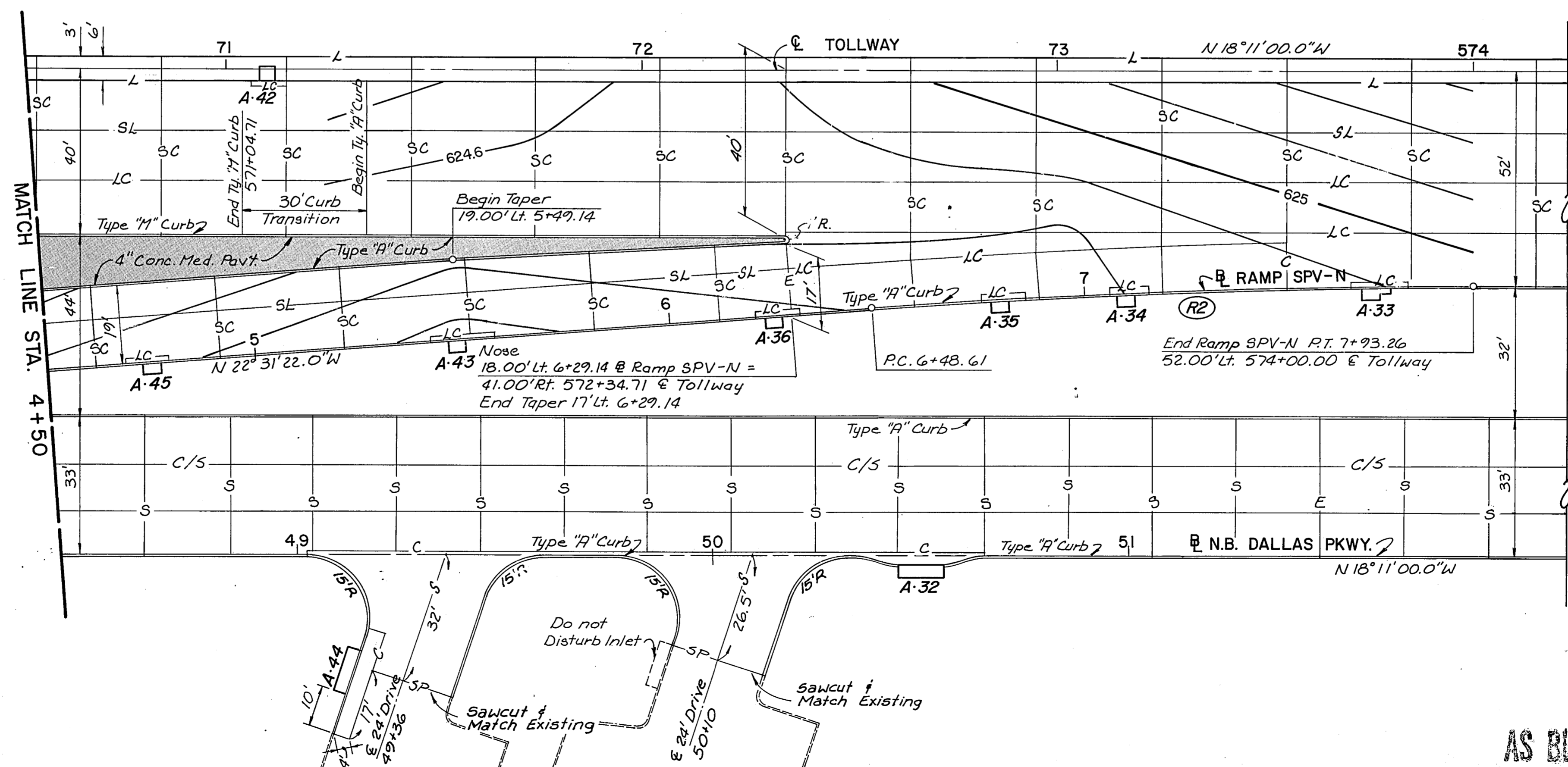


- LEGEND**
- TOLLWAY AND RAMP JOINTS**
- SC - Contraction
 - LC - Longitudinal Construction w/Tie Bar
 - SL - Sawed Longitudinal
 - L - Longitudinal Construction w/o Tie Bar
 - E - Transverse Expansion
- SERVICE ROADS AND STREET JOINTS**
- S - Sawed Dummy
 - SP - Special Construction Joint
 - C - Construction
 - E - Transverse Expansion
 - (D-I) - Horizontal Curve Number
 - A-I0 - Inlet Number

NOTES:
Contours shown are supplementary to profile sheets and are finished top of pavement elevations.

CURVE DATA							
CURVE NO.	LOCATION	P.I. STATION	Δ	R	T	L	D
NI	@ N.B. Dallas Pkwy.	46+02.21	17° 52' 40.7" LT.	1432.39'	225.31'	446.95'	4° 00' 00"
RI	@ Ramp SPV-N	1+87.50	22° 13' 02.7" LT.	954.93'	187.50'	370.29'	6° 00' 00"
R2	"	7+20.97	4° 20' 22.0" RT.	1909.86'	72.36'	144.65'	3° 00' 00"
DI	@ Tollway	567+50.18	17° 52' 40.7" LT.	1432.39'	225.31'	446.95'	4° 00' 00"



NO.	REVISION	BY	DATE
TEXAS TURNPIKE AUTHORITY			
DALLAS NORTH TOLLWAY			
PAVING PLAN			
RAMP SPV-N			
TurnerCollie & Braden Inc. Consulting Engineers			SECTION VI
DRAWN	L.J.D.	DATE	3-83
DESIGNED	G.G.S.	DATE	3-83
CHECKED	J.B.L.	DATE	3-83
SCALE	1" = 20'		
CONTRACT NO. DNT-114 SHEET R30 OF R103			

AS BUILT PLANS