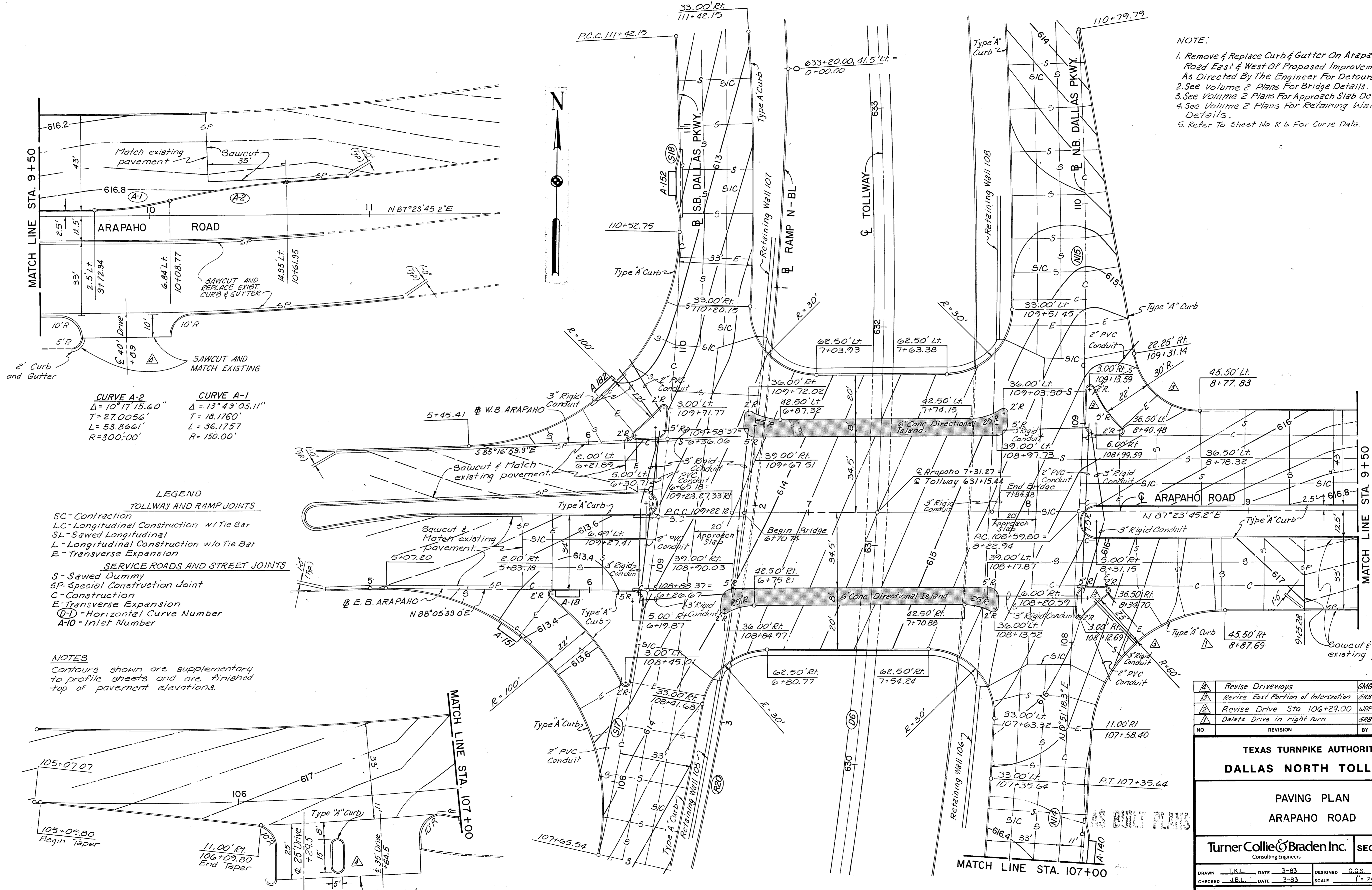


- NOTE:
1. Remove & Replace Curb & Gutter On Arapaho Road East & West Of Proposed Improvements As Directed By The Engineer For Detours.
  2. See Volume 2 Plans For Bridge Details.
  3. See Volume 2 Plans For Approach Slab Details.
  4. See Volume 2 Plans For Retaining Wall Details.
  5. Refer To Sheet No. R 4 For Curve Data.



**CURVE A-2**  
 $\Delta = 10^{\circ}17'15.60''$   
 $T = 27.0056'$   
 $L = 53.8661'$   
 $R = 300.00'$

**CURVE A-1**  
 $\Delta = 13^{\circ}49'05.11''$   
 $T = 18.1760'$   
 $L = 36.1757'$   
 $R = 150.00'$

**LEGEND**

**TOLLWAY AND RAMP JOINTS**  
 SC - Contraction  
 LC - Longitudinal Construction w/Tie Bar  
 SL - Sawn Longitudinal  
 L - Longitudinal Construction w/o Tie Bar  
 E - Transverse Expansion

**SERVICE ROADS AND STREET JOINTS**  
 S - Sawn Dummy  
 SP - Special Construction Joint  
 C - Construction  
 E - Transverse Expansion  
 (D) - Horizontal Curve Number  
 A-10 - Inlet Number

**NOTES**  
 Contours shown are supplementary to profile sheets and are finished top of pavement elevations.

NO.	REVISION	BY	DATE
1	Revise Driveways	GMG	10-7-85
2	Revise East Portion of Intersection	GRB	2-26-85
3	Revise Drive Sta 106+29.00	WAP	11-9-84
4	Delete Drive in right turn	GRB	9-6-84

**TEXAS TURNPIKE AUTHORITY**  
**DALLAS NORTH TOLLWAY**

**PAVING PLAN**  
**ARAPAHO ROAD**

Turner Collie & Braden Inc. **SECTION VI**  
 Consulting Engineers

DRAWN T.K.L. DATE 3-83	DESIGNED G.G.S. DATE 3-83
CHECKED J.B.L. DATE 3-83	SCALE 1" = 20'

CONTRACT NO. **DNT-114** SHEET **R40** OF **R103**