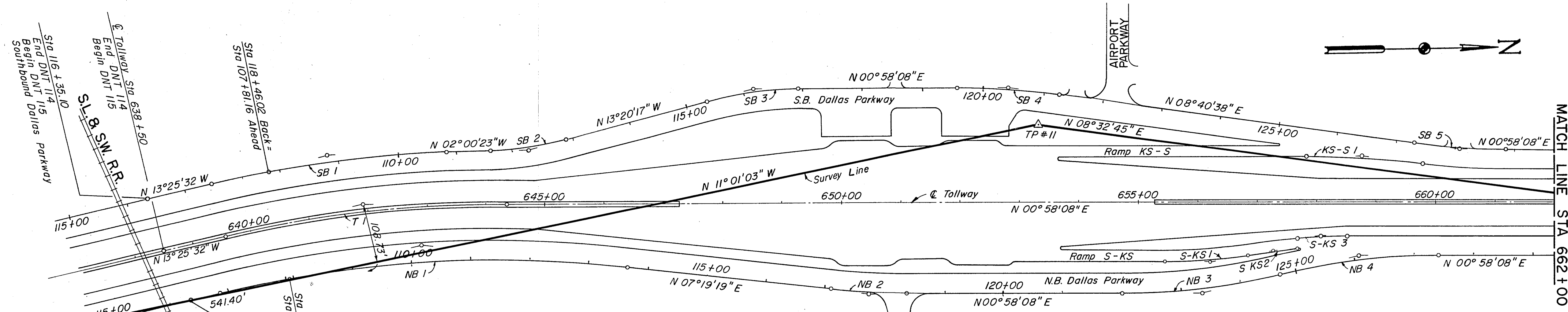
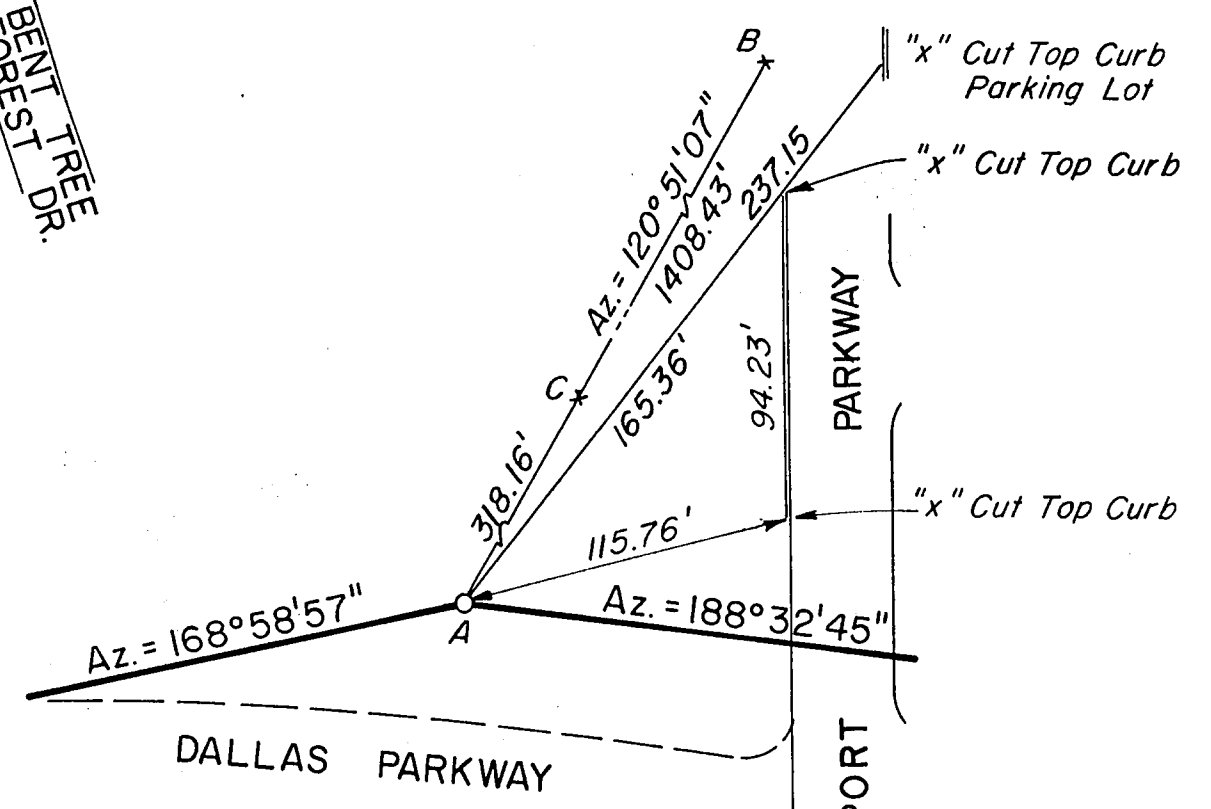


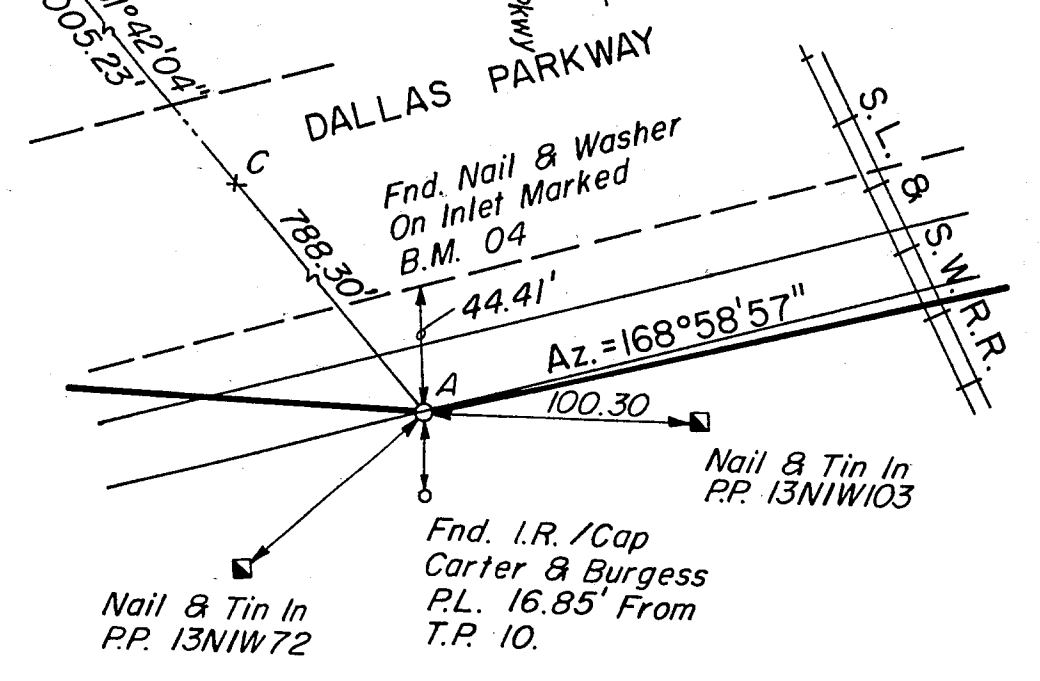
NOTES:
1. Refer to plan-profile sheets for additional alignment details.



- A= TRAVERSE POINT #10
1/2" IRON ROD SET 85' EAST OF THE CENTERLINE OF THE DALLAS PARKWAY AND 180' SOUTH OF THE S.L. & S.W.R.R.
- B= CHISELED "X" ON THE TOP OF CURB ON THE WEST SIDE OF THE ADELSTEIN PLAZA #15501 DALLAS PARKWAY.
- C= CHISELED "X" ON THE TOP OF CURB ON THE EAST SIDE OF A PARKING LOT OF THE ADELSTEIN PLAZA #15501 DALLAS PARKWAY.

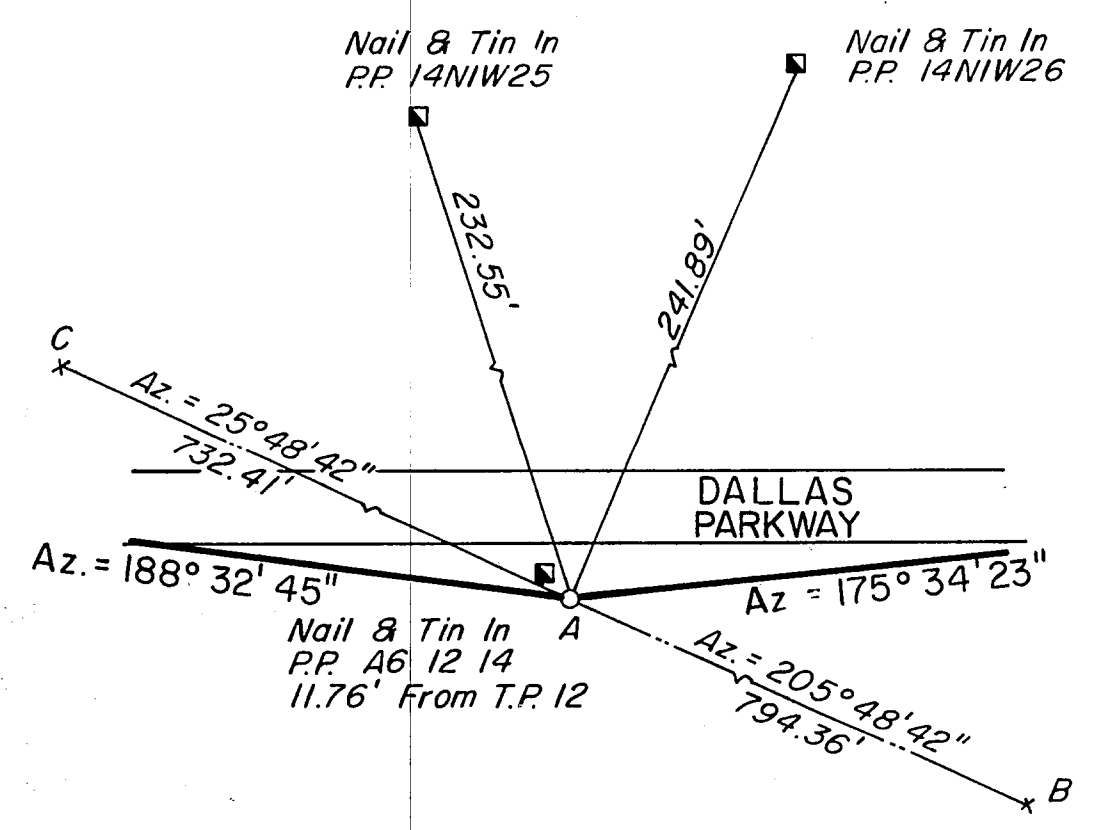
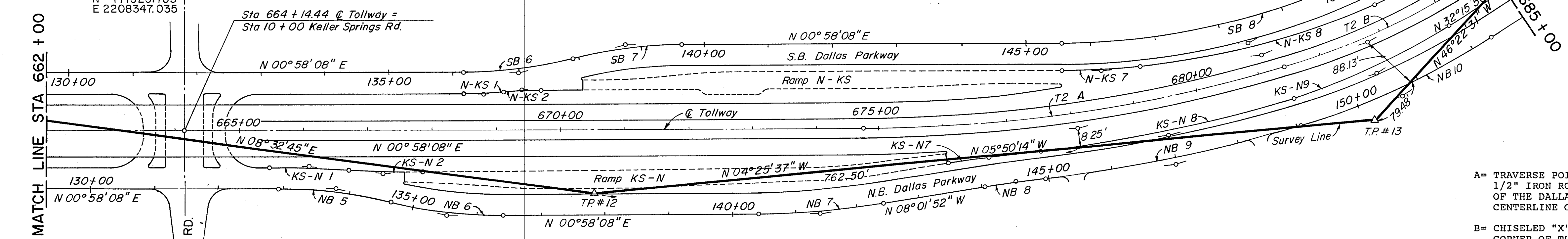


- A= TRAVERSE POINT #11
1/2" IRON ROD SET 80' WEST OF THE CENTERLINE OF THE DALLAS PARKWAY AND 130' SOUTH OF THE CENTERLINE OF AIRPORT PARKWAY.
- B= CHISELED "X" ON THE TOP OF CURB ON THE EAST SIDE OF THE PARKING LOT FOR THE PARKWAY BUSINESS CENTER AT #4950 KELLER SPRINGS ROAD OPPOSITE BUILDING #4.
- C= CHISELED "X" ON THE TOP OF CURB ON THE SOUTH SIDE OF THE PARKING LOT FOR HARRIS DATA COMMUNICATIONS AT #16001 DALLAS PARKWAY.



TRAVERSE PT. #10

N 471525.753
E 2208347.035



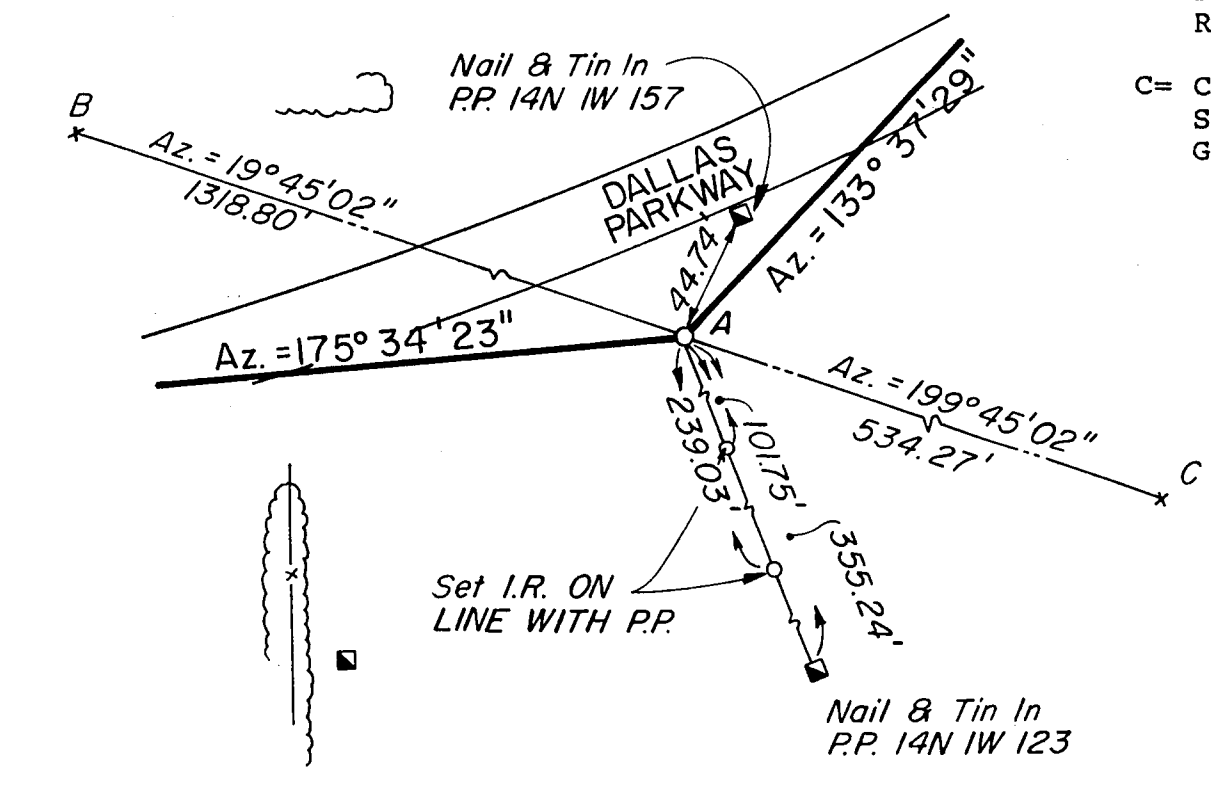
TRAVERSE PT. #12

N 474894.467
E 2208283.761

- A= TRAVERSE POINT #12
1/2" IRON ROD SET 30' EAST OF THE CENTERLINE OF DALLAS PARKWAY AND 630' NORTH OF THE CENTERLINE OF KELLER SPRINGS ROAD.
- B= CHISELED "X" ON THE TOP OF CURB IN THE S.W. CORNER OF A PARKING LOT FOR THE HUMBLE EXPLORATION COMPANY, INC. AT #16200 DALLAS PARKWAY.
- C= CHISELED "X" ON THE TOP OF CURB ON THE SOUTH SIDE OF KELLER SPRINGS ROAD AND WEST OF THE DALLAS PARKWAY 85' WEST OF A FIRE HYDRANT.

TRAVERSE PT. #11

N 473176.614
E 2208025.619



TRAVERSE PT. #13

N 476114.367
E 2208189.319

- A= TRAVERSE POINT #13
1/2" IRON ROD SET 50' EAST OF THE CENTERLINE OF THE DALLAS PARKWAY AND 860' SOUTH OF THE CENTERLINE OF WEST GROVE DRIVE.
- B= CHISELED "X" ON THE TOP OF CURB AT THE N.E. CORNER OF THE PARKING LOT OF THE UNITED FIDELITY BUILDING AT #5055 KELLER SPRINGS ROAD.
- C= CHISELED "X" ON THE TOP OF CURB ON THE EAST SIDE OF KNOLL TRAIL DRIVE 700' SOUTH OF WEST GROVE DRIVE.

NO.	REVISION	BY	DATE
TEXAS TURNPIKE AUTHORITY DALLAS NORTH TOLLWAY			
GEOMETRIC CONTROLS & TRAVERSE TIES STA 638 + 50 TO STA 685 + 00			
Gibbs & Hill, Inc. ENGINEERS DESIGNERS CONSTRUCTORS DALLAS			SECTION
DRAWN	AELT	DATE	7/3/84
CHECKED	REF	DATE	7/18/84
		DESIGNED	DWC
		SCALE	1"=100'
CONTRACT NO. DNT-115 SHEET C1			