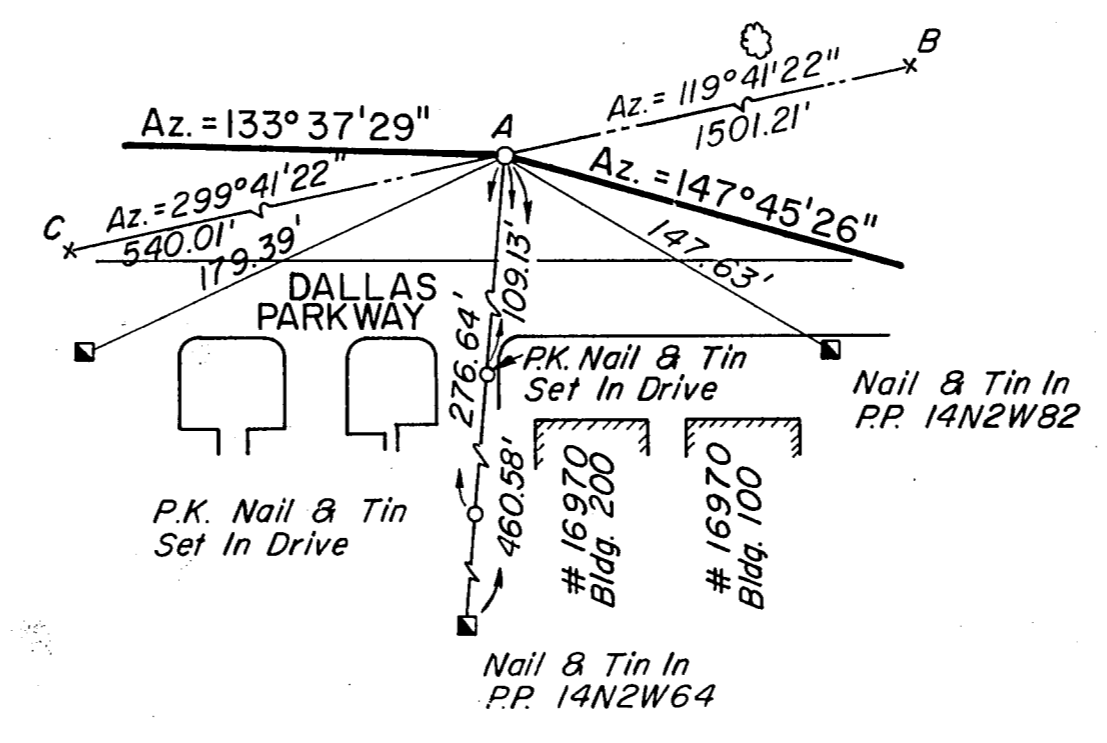
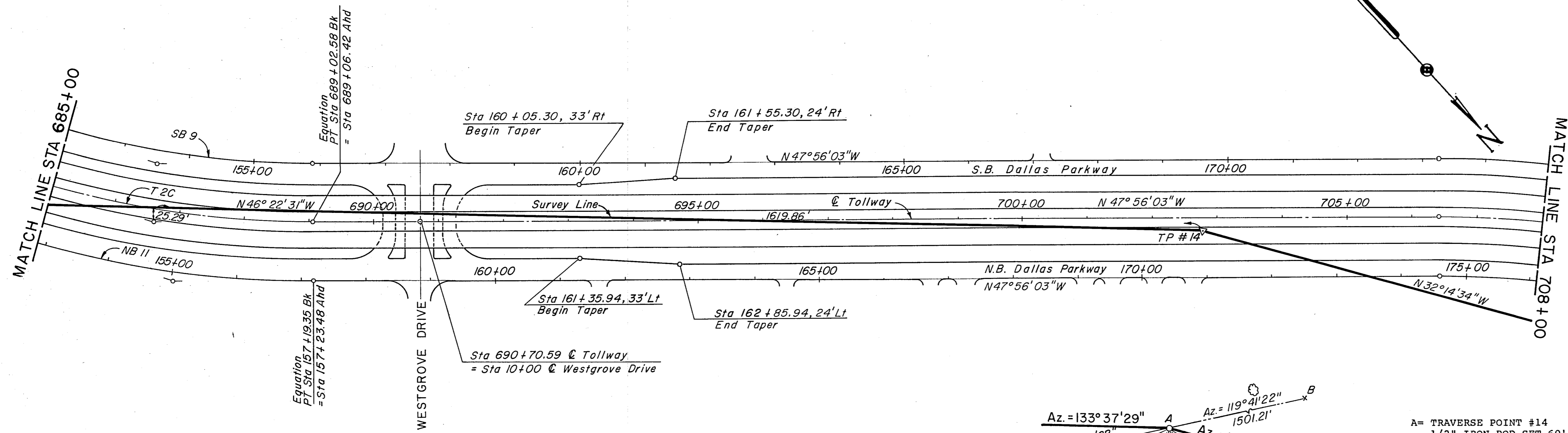
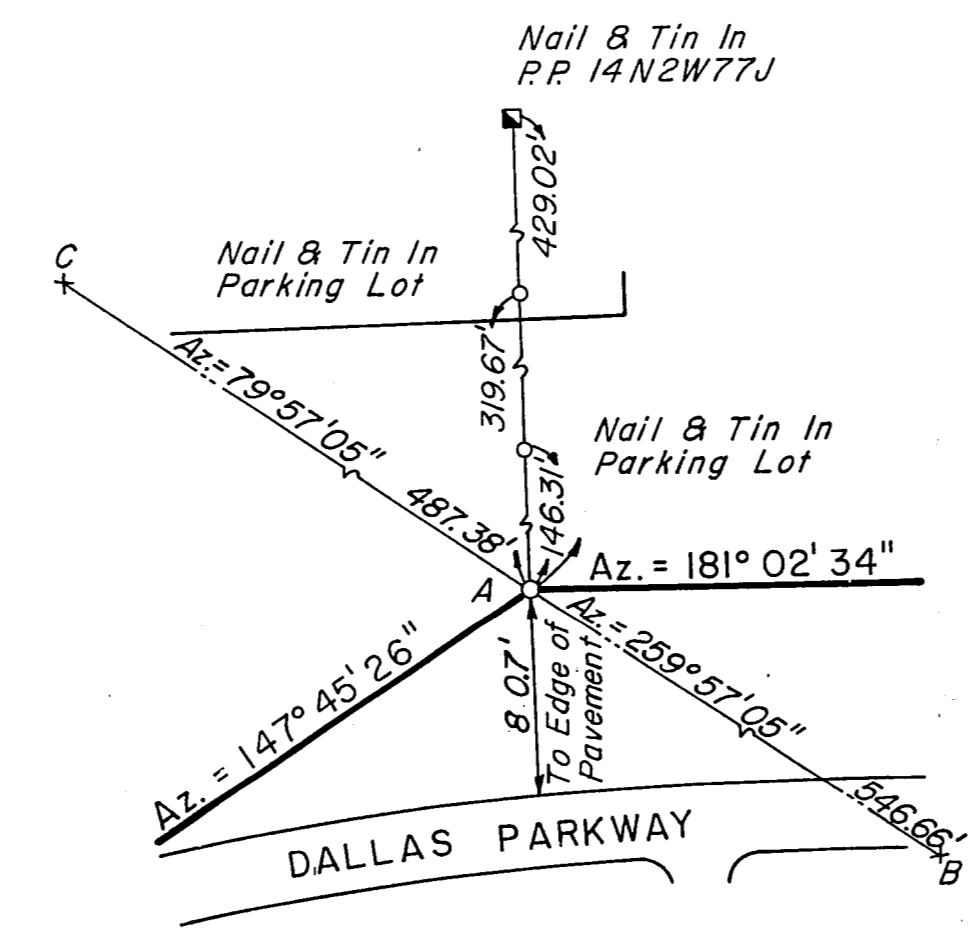
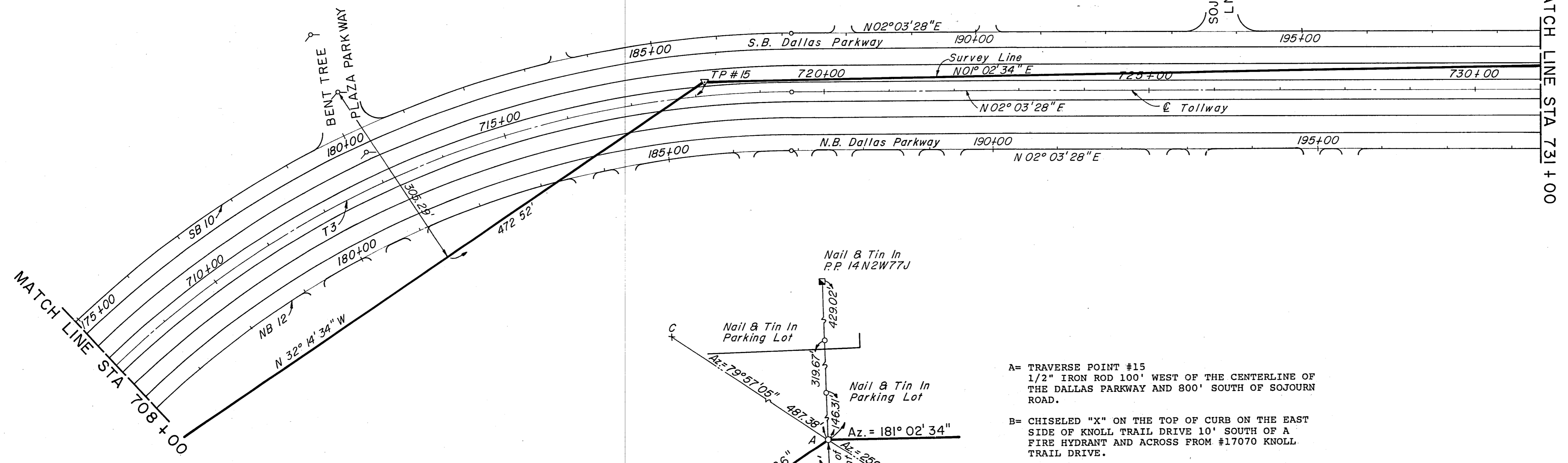
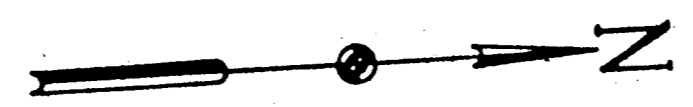


NOTES:  
 1. Refer to plan-profile sheets for additional alignment details.



- A= TRAVERSE POINT #14  
1/2" IRON ROD SET 60' WEST OF DALLAS PARKWAY AND OPPOSITE BUILDING 100 & 200 OF #16970 DALLAS PARKWAY.
- B= CHISELED "X" ON THE TOP OF CURB ON THE S.E. CORNER OF PARKING LOT AT THE CORNER OF ADDISON ROAD AND SIR LANCELOT AT #16775 ADDISON ROAD.
- C= CHISELED "X" ON THE TOP OF CURB 10' EAST OF THE S.W. CORNER OF A PARKING LOT FOR THE POLITICAL RESEARCH INC. BUILDING AT #16850 DALLAS PARKWAY.

TRAVERSE PT. #14  
 N 477539.623  
 E 2206693.948



- A= TRAVERSE POINT #15  
1/2" IRON ROD 100' WEST OF THE CENTERLINE OF THE DALLAS PARKWAY AND 800' SOUTH OF SOJOURN ROAD.
- B= CHISELED "X" ON THE TOP OF CURB ON THE EAST SIDE OF KNOLL TRAIL DRIVE 10' SOUTH OF A FIRE HYDRANT AND ACROSS FROM #17070 KNOLL TRAIL DRIVE.
- C= CHISELED "X" ON THE TOP OF CURB ON THE WEST SIDE OF ADDISON ROAD AT #16835 ADDISON ROAD.

TRAVERSE PT. #15  
 N 478799.664  
 E 2205899.146

NO.	REVISION	BY	DATE
TEXAS TURNPIKE AUTHORITY DALLAS NORTH TOLLWAY			
GEOMETRIC CONTROLS & TRAVERSE TIES STA 685 + 00 TO STA 731 + 00			
<b>Gibbs &amp; Hill, Inc.</b> ENGINEERS DESIGNERS CONSTRUCTORS DALLAS			SECTION VII
DRAWN	VER	DATE 7/3/84	DESIGNED DWG DATE 6/29/84
CHECKED	REF	DATE 7/19/84	SCALE 1"=100'
CONTRACT NO. DNT-115 SHEET C2 OF C3			