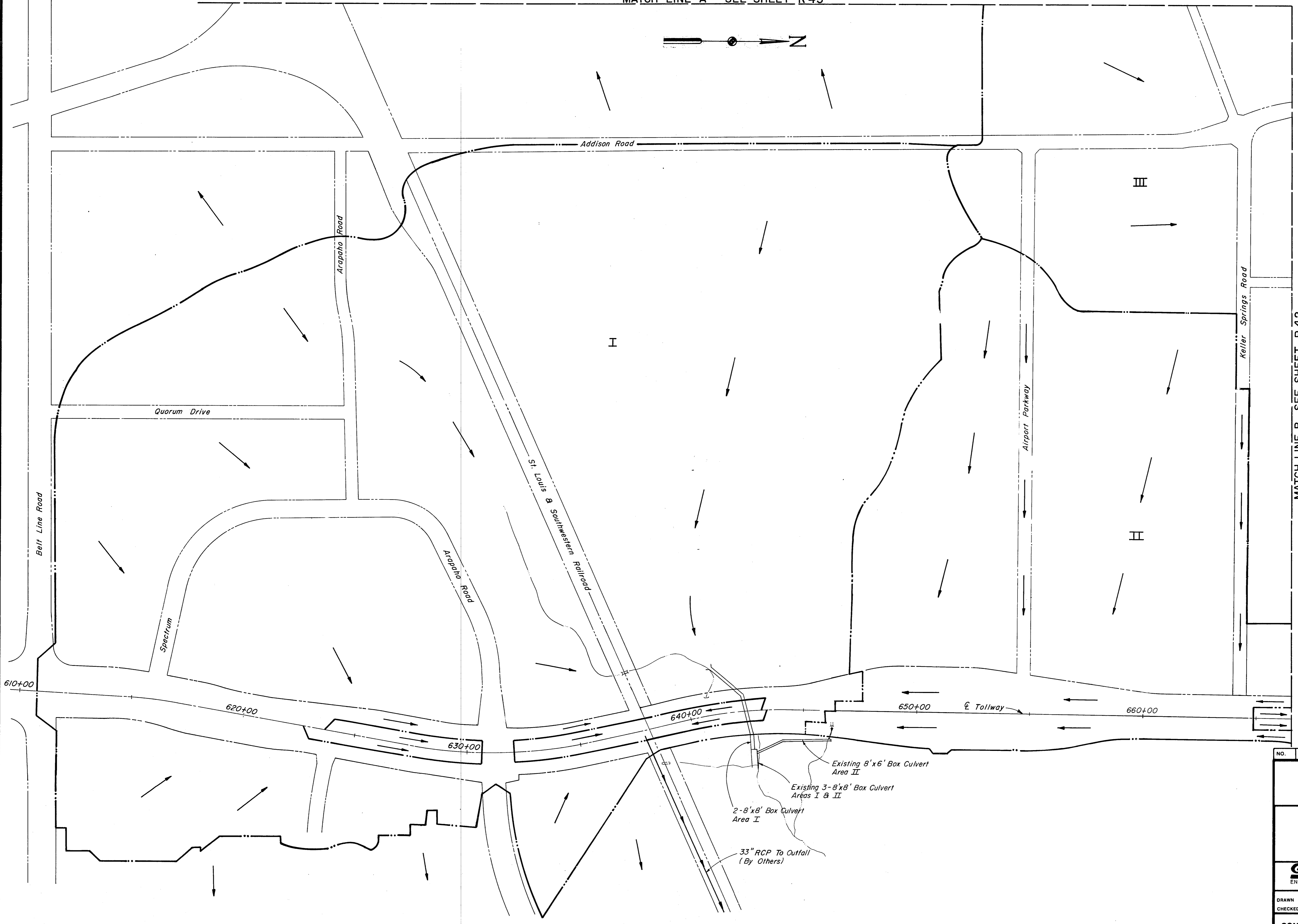
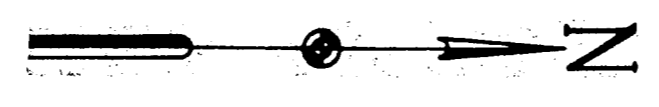


MATCH LINE A SEE SHEET R 43



MATCH LINE B SEE SHEET R 42

Existing 8' x 6' Box Culvert Area II
Existing 3'-8' x 8' Box Culvert Areas I & II
2-8' x 8' Box Culvert Area I
33" RCP To Outfall (By Others)

NO.	REVISION	BY	DATE
TEXAS TURNPIKE AUTHORITY DALLAS NORTH TOLLWAY			
DRAINAGE AREA MAP			
Gibbs & Hill, Inc. ENGINEERS DESIGNERS CONSTRUCTORS DALLAS			SECTION VII
DRAWN <i>CJB</i>	DATE <i>4/18/83</i>	DESIGNED <i>KJ</i>	DATE <i>4/15/83</i>
CHECKED <i>DWC</i>	DATE <i>5/8/84</i>	SCALE <i>1" = 200'</i>	
CONTRACT NO. DNT-115 SHEET R 41 OF R 85			