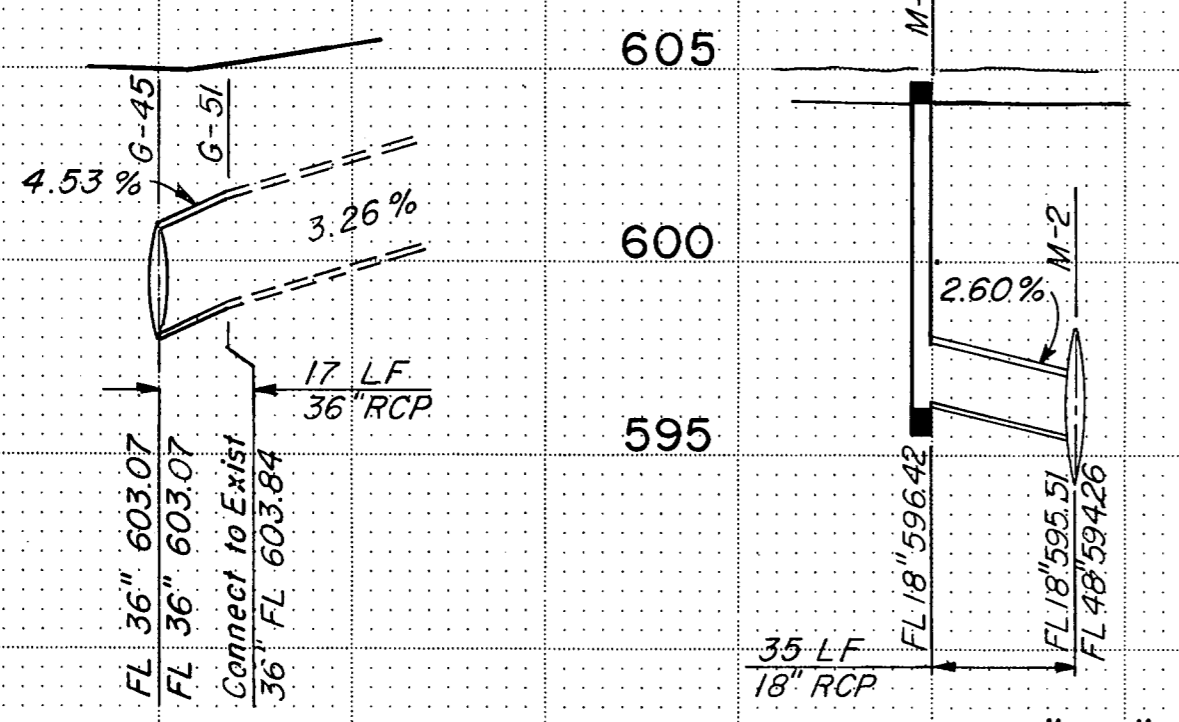
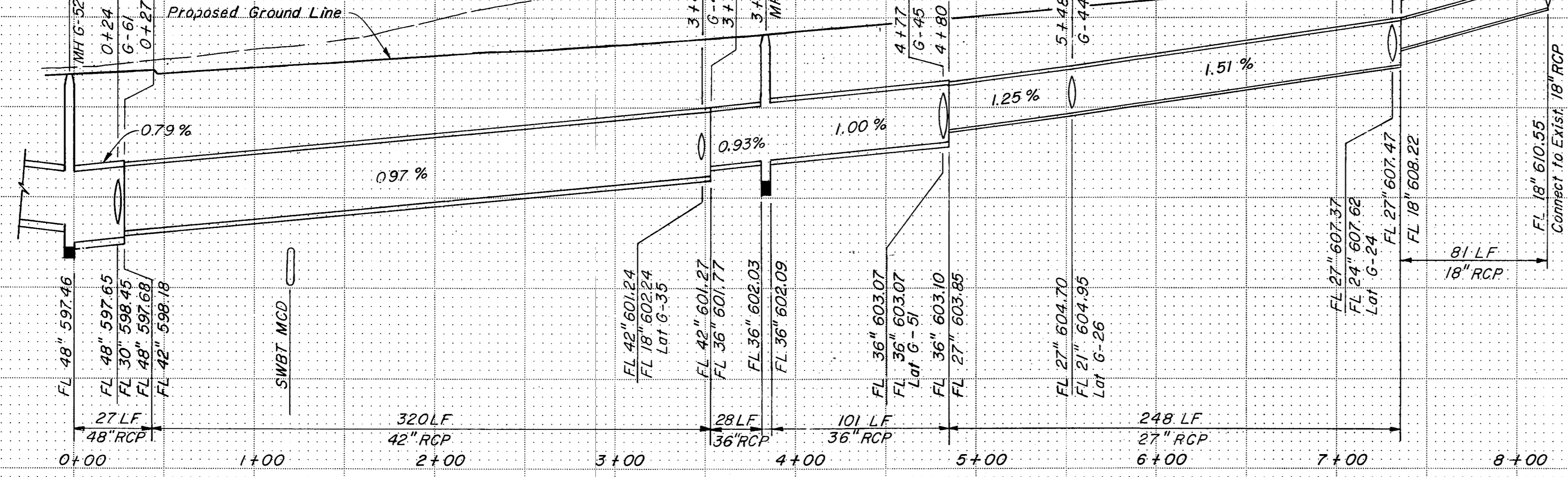


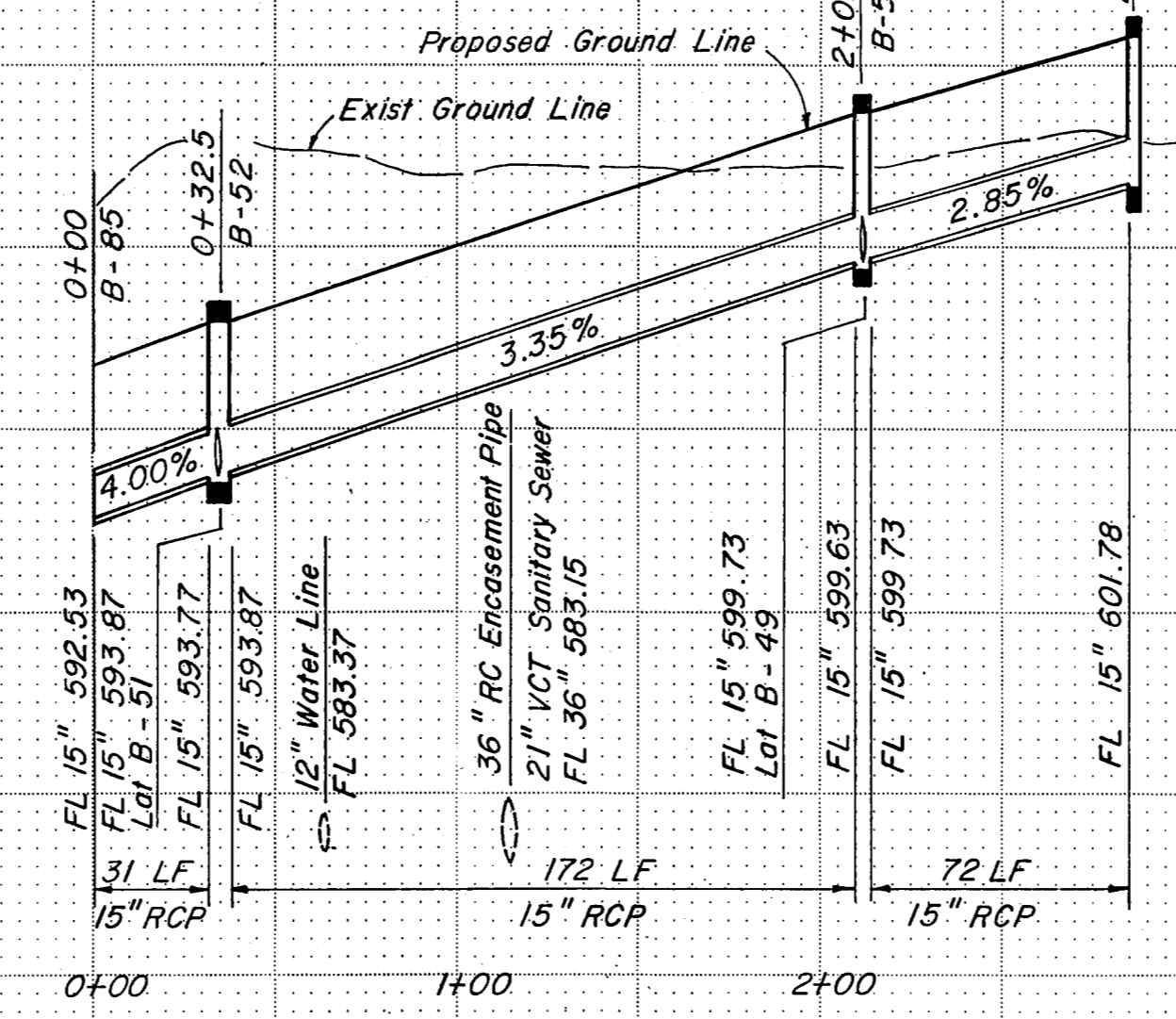
LINE "G"



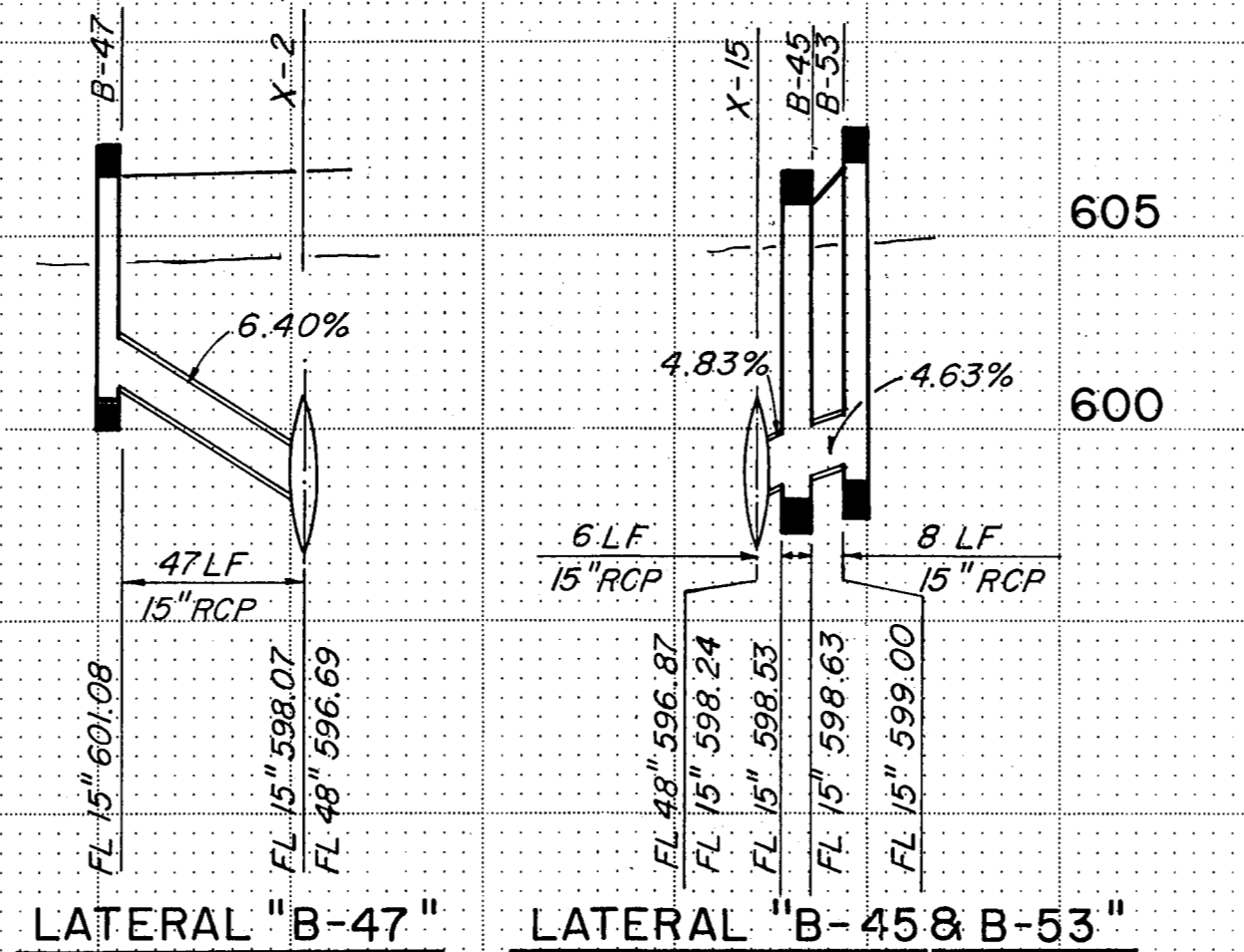
LATERAL "G-51"



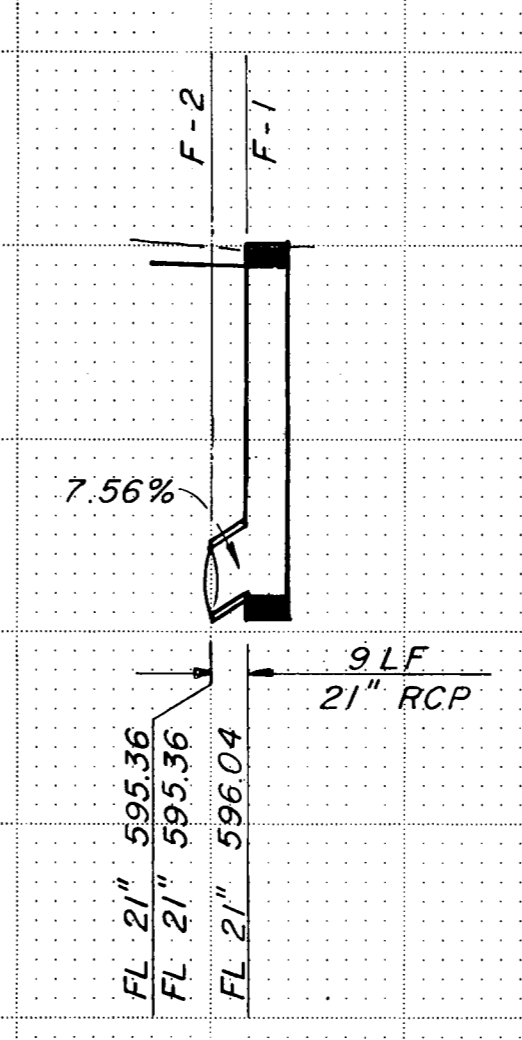
LINE "G-2"



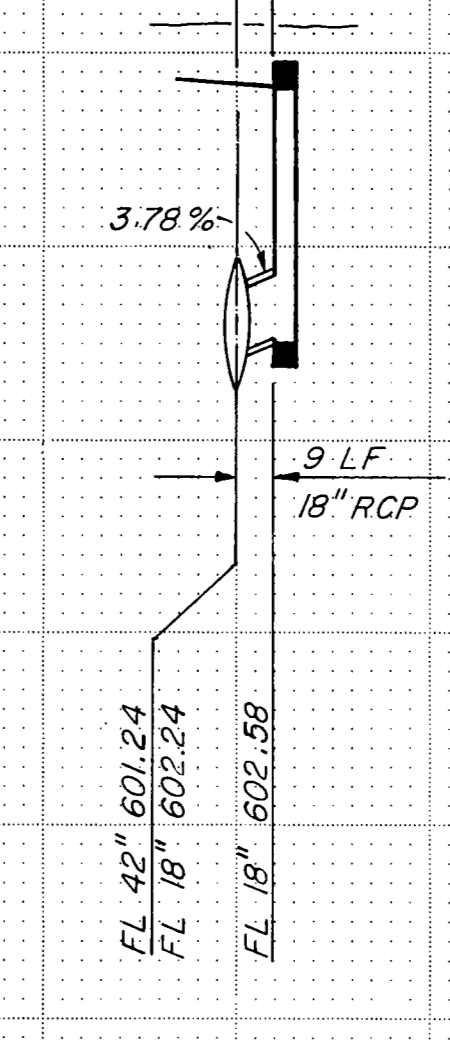
LINE "B-4"



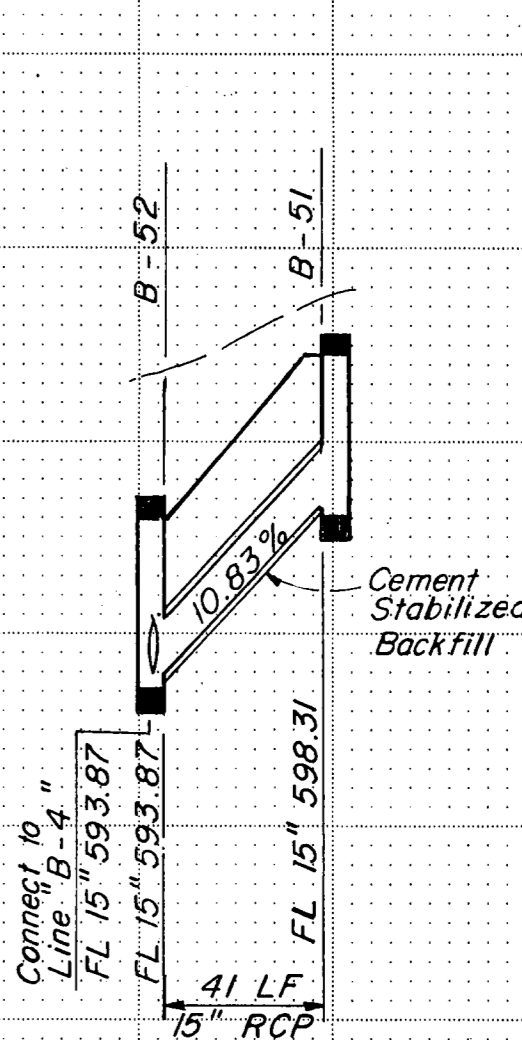
LATERAL "B-47" LATERAL "B-45 & B-53" LATERAL "B-49"



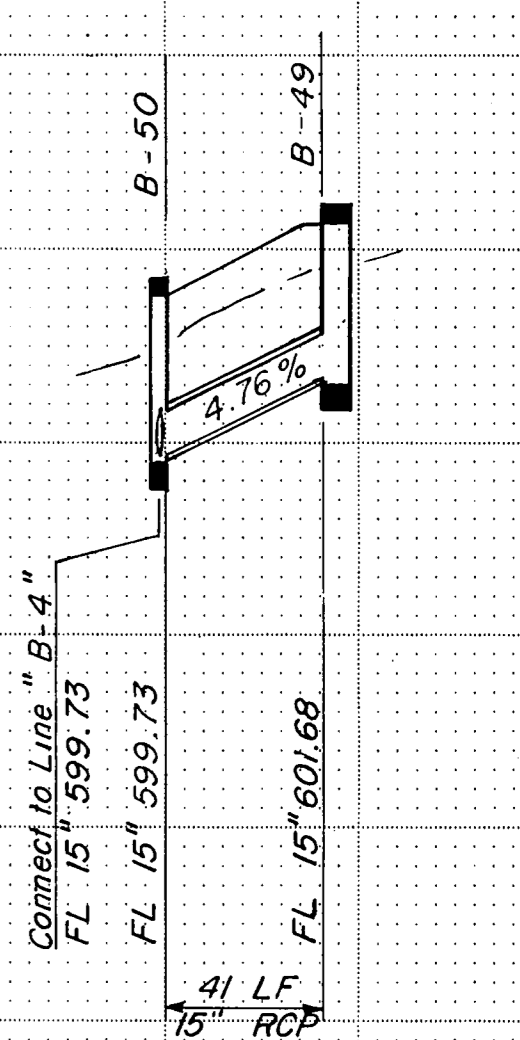
LATERAL "F-1"



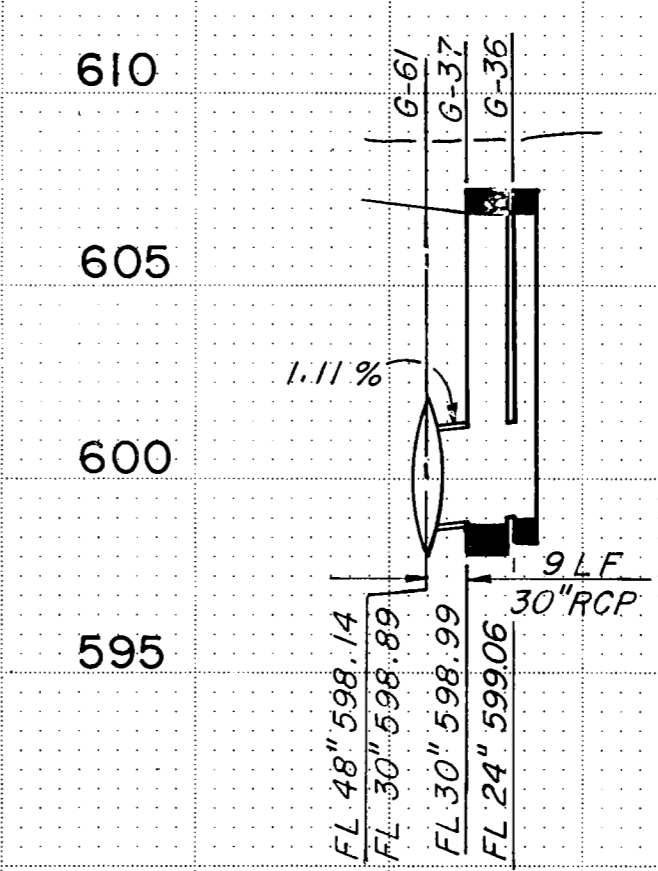
LATERAL "G-35"



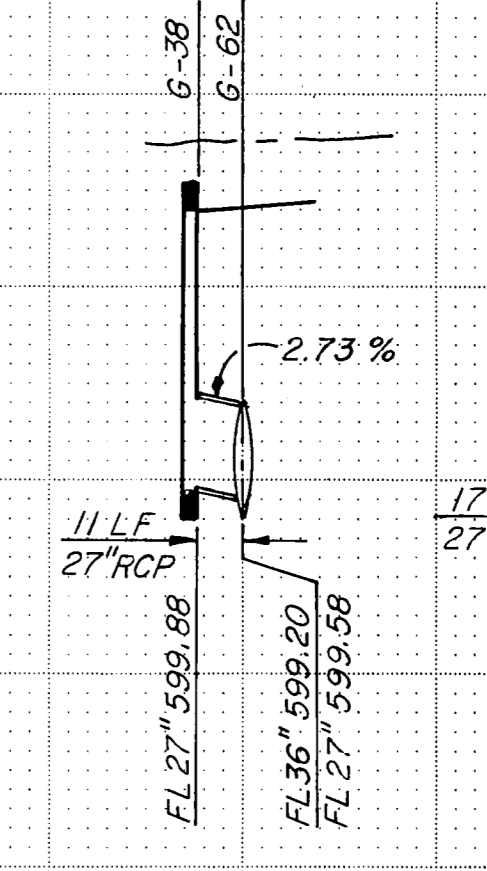
LATERAL "B-51"



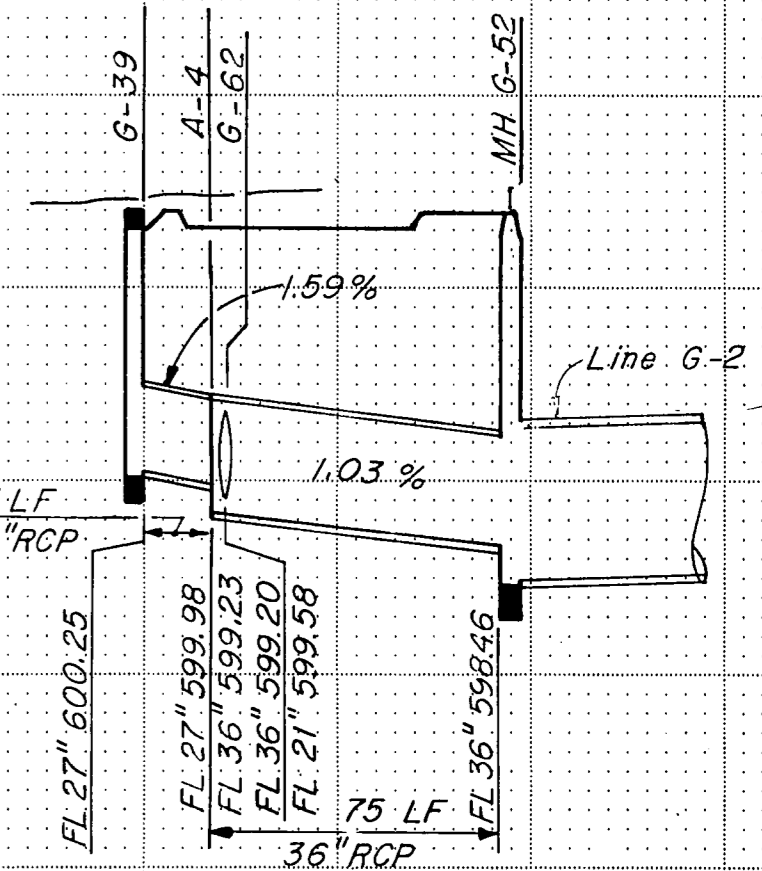
LATERAL "B-49"



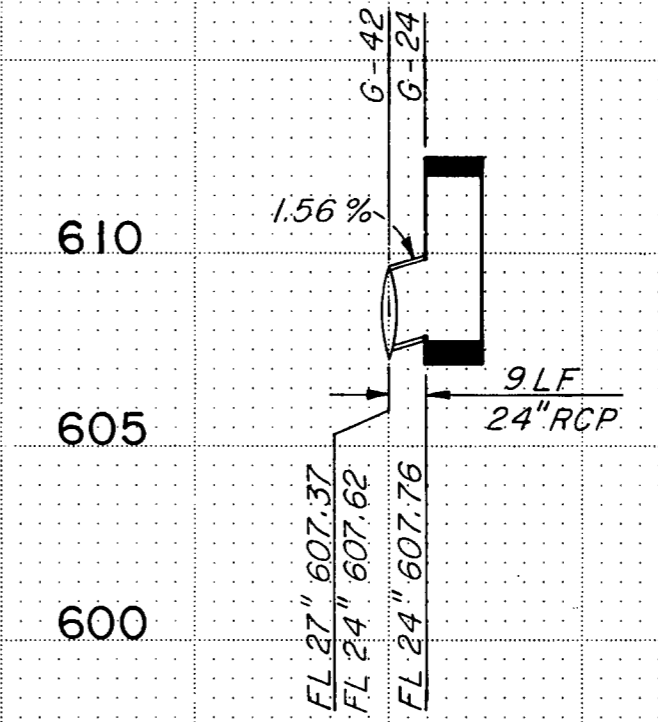
LATERAL "G-37"



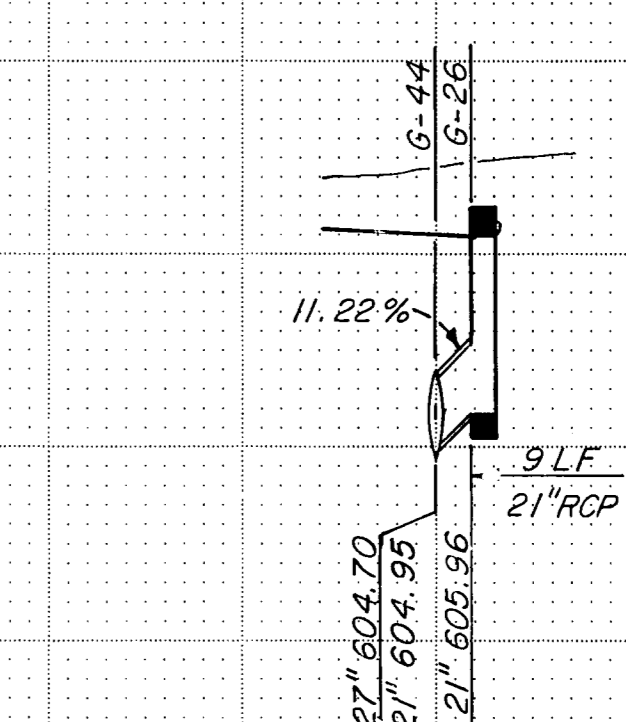
LATERAL "G-38"



LATERAL "G-39"



LATERAL "G-24"



LATERAL "G-26"

NOTES:
1. Refer to Sheet R74 for depth of cement stabilized backfill.

STORM SEWER LINE: "G", "G-2", "B-4"
LATERAL: "B-45 & B-53", "B-49", "B-51", "B-47", "F-1", "G-24", "G-26", "G-35", "G-37", "G-38", "G-39", "G-51", "M-1"

NO.		REVISION		BY	DATE
TEXAS TURNPIKE AUTHORITY DALLAS NORTH TOLLWAY					
STORM SEWER PROFILES					
Gibbs & Hill, Inc.					
MADE	AELT	DATE	1/84	TRACED	AELT
CHECKED	MGB	DATE	7/84	SCALE	1"=50'H 1"=5'V
CONTRACT NO. DNT-115 SHEET R50 OF R85					