

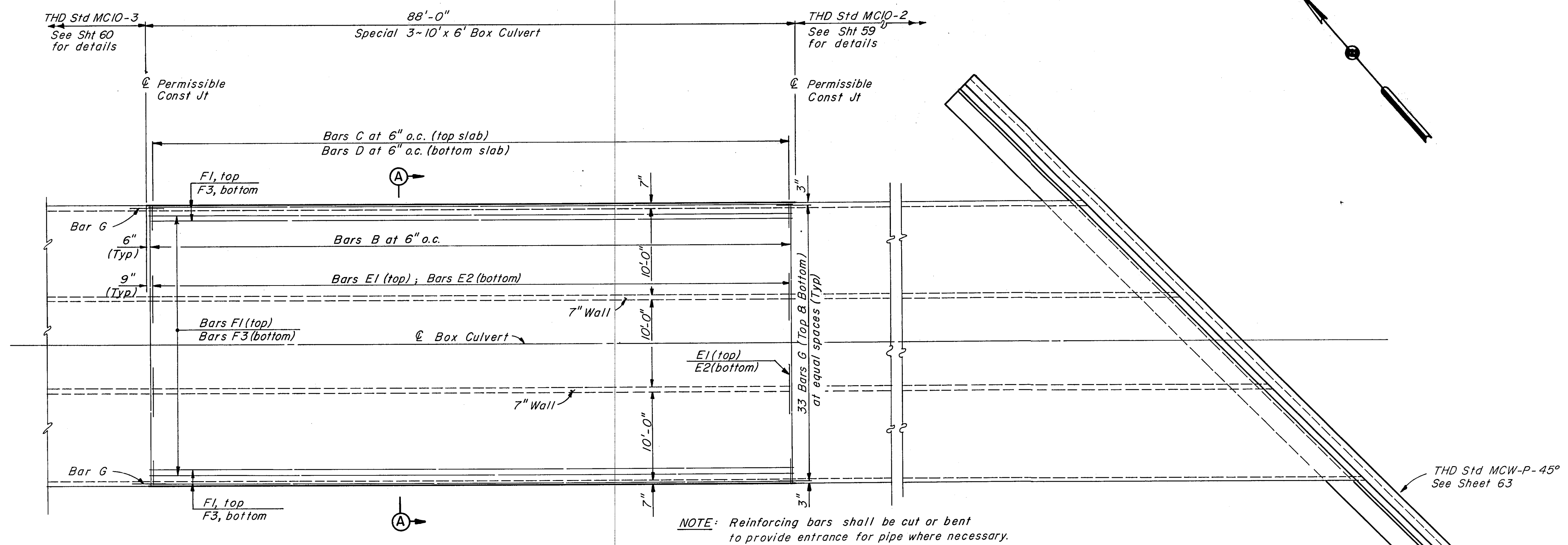
TABLE OF REINFORCING STEEL

BAR	TYPE	SIZE	SPACING	NO.	LENGTH	WEIGHT
B	Str	#5	6"	350	32'-0"	11682
C	Bent	#5	6"	350	9'-5"	3438
D	Str	#6	6"	350	5'-1"	2672
E1	Str	#6	6"	348	5'-8"	2962
E2	Str	#6	5 1/2"	380	5'-8"	3234
F1	Str	#4	~	35	89'-4"	2089
F2	Str	#4	9"	32	89'-4"	1910
F3	Str	#4	~	35	89'-4"	2089
M	Str	#4	15"	144	5'-11"	569
Y	Bent	#4	12"	176	3'-11"	460
Z	Bent	#4	12"	176	13'-5"	1577
G	Str	#4	12"	132	4'-0"	353

ESTIMATED QUANTITY SUMMARY

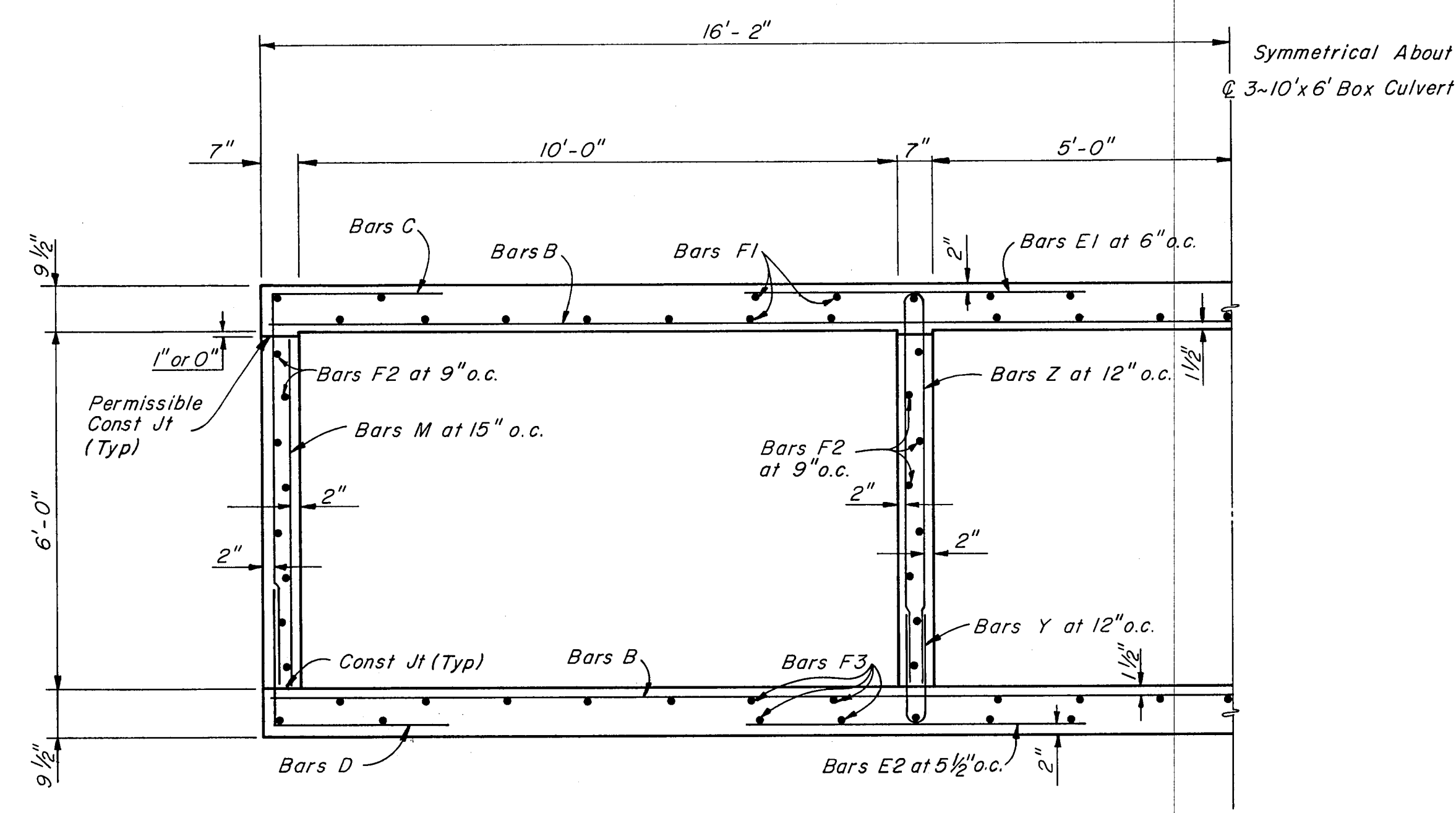
ITEM NO.	DESCRIPTION	UNIT	QUANTITY
* 421	CLASS C CONCRETE	CY	212.5
* 440	REINFORCING STEEL	Lbs	33,035

■ Bar length includes one-1'-6" lap.  
 \* Quantities are for Contractor's information only.

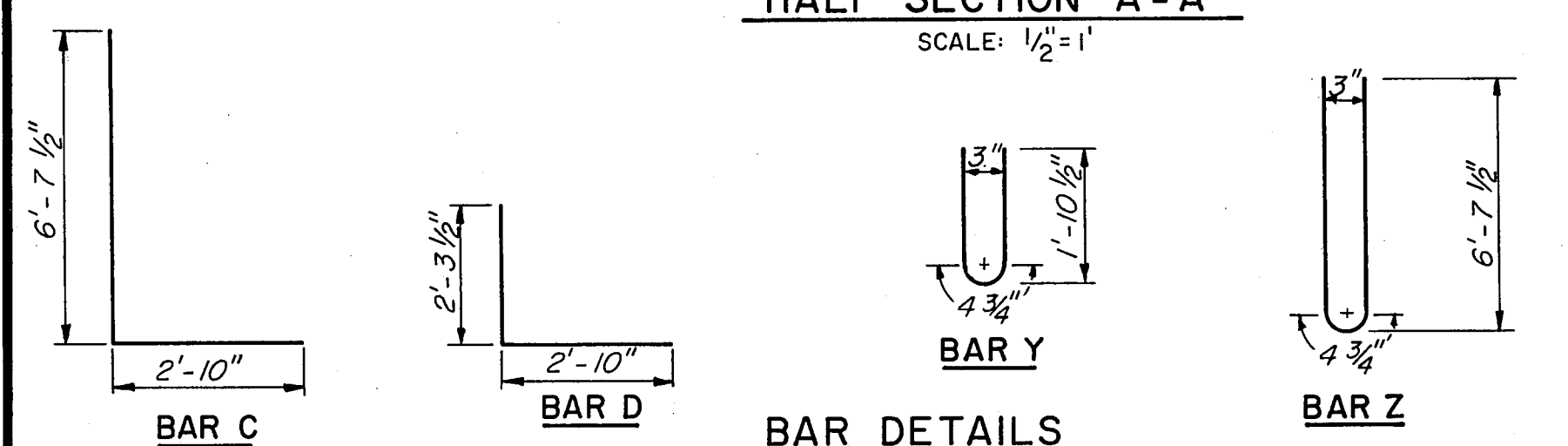


NOTE: Reinforcing bars shall be cut or bent to provide entrance for pipe where necessary.

PLAN  
 SCALE: 1/8"=1'



HALF SECTION A-A  
 SCALE: 1/2"=1'



NO.	REVISION	BY	DATE
TEXAS TURNPIKE AUTHORITY DALLAS NORTH TOLLWAY SPECIAL BOX CULVERT DETAILS STA 678 + 20			
<b>Gibbs &amp; Hill, Inc.</b> ENGINEERS DESIGNERS CONSTRUCTORS DALLAS			SECTION VII
DRAWN	VER	DATE	2-6-84
CHECKED	REF	DATE	2-6-84
DESIGNED	HS	DATE	2-1-84
SCALE	As Shown		
CONTRACT NO. DNT-115 SHEET R71 OF R85			