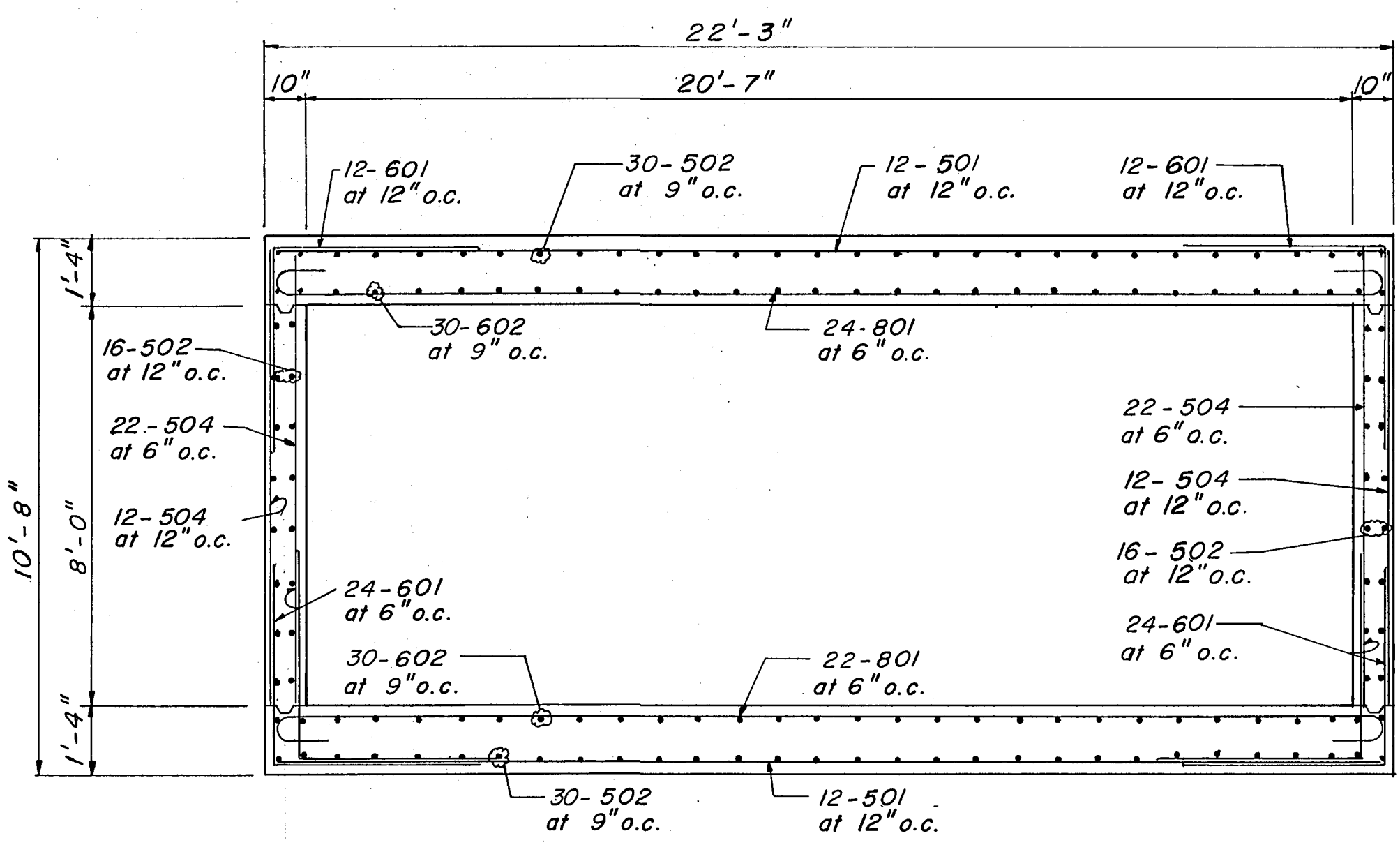
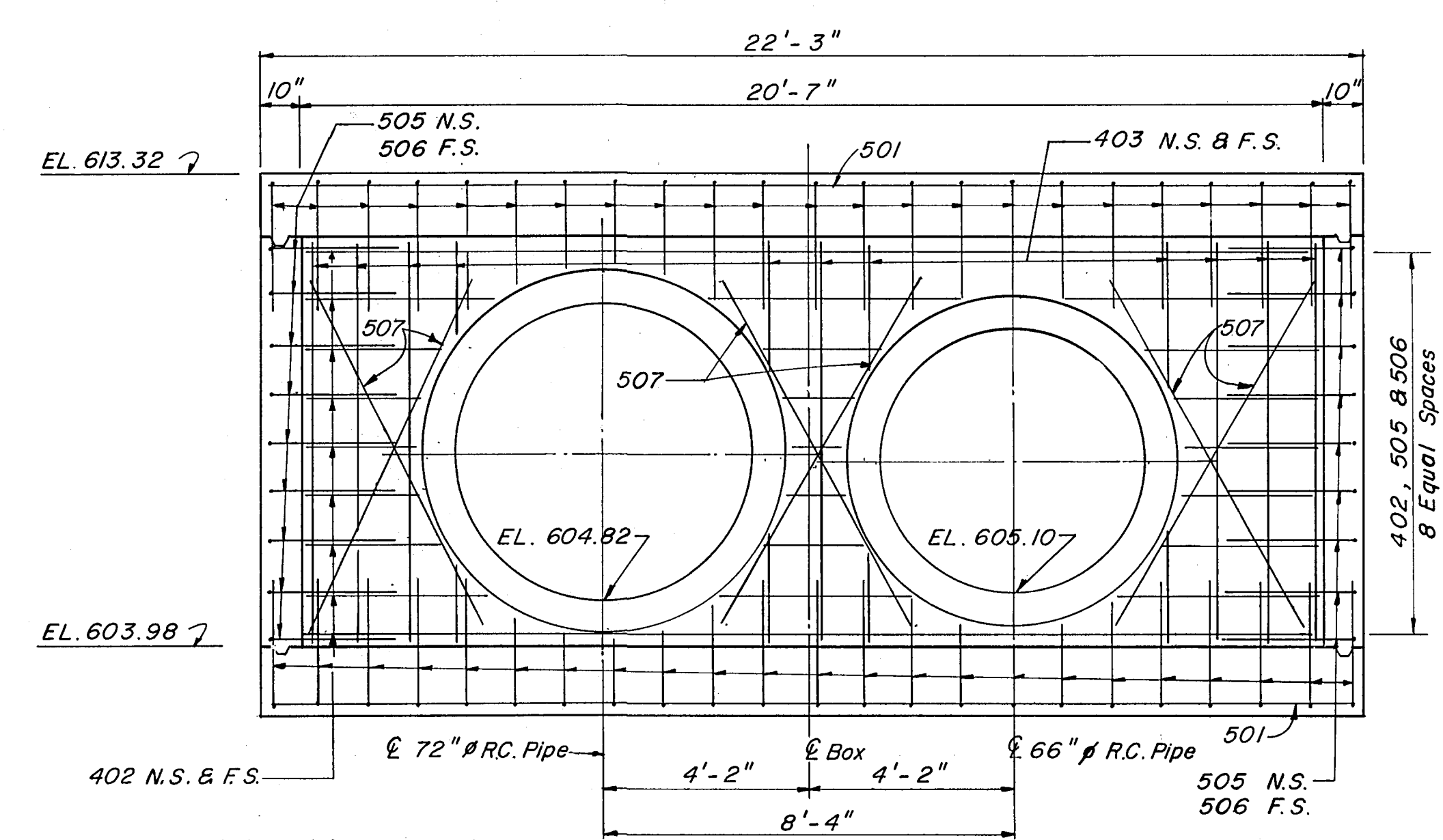


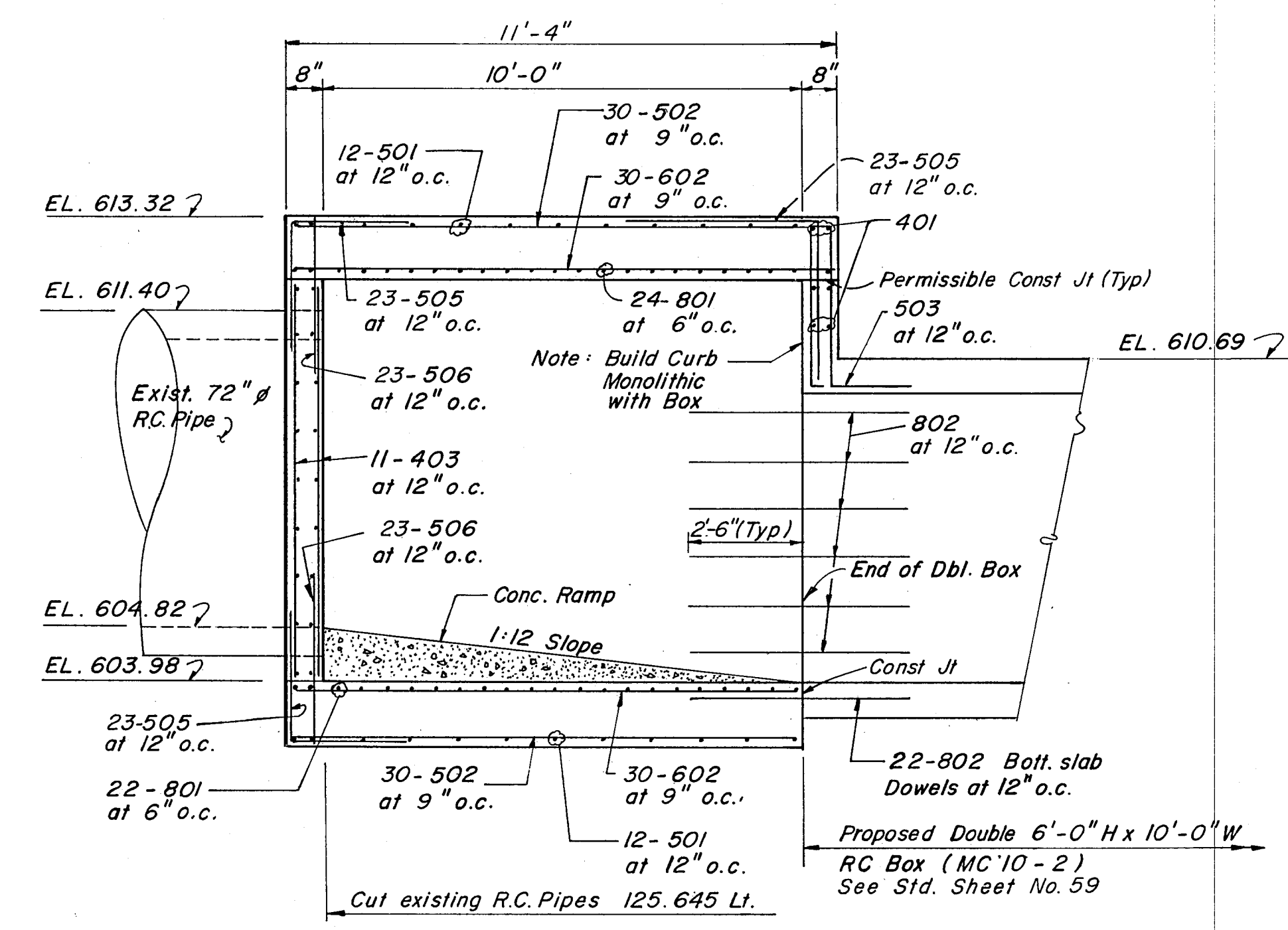
**SLAB PLAN**  
SCALE: 3/8" = 1'-0"



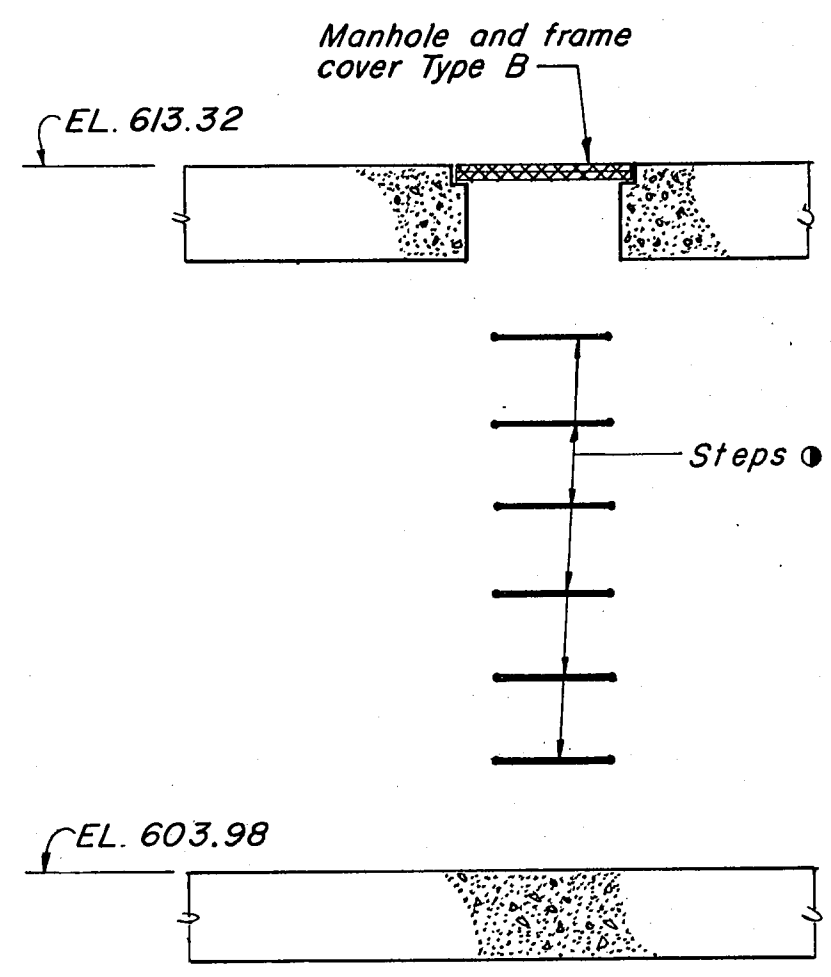
**SECTION B-B**  
SCALE: 3/8" = 1'-0"



**ELEVATION (AT WEST END OF BOX)**  
SCALE: 3/8" = 1'-0"

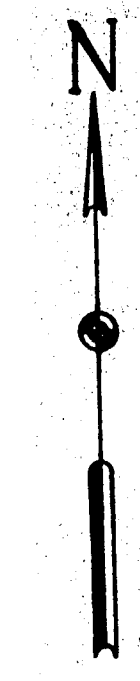


**SECTION A-A**  
SCALE: 3/8" = 1'-0"



**SECTION C-C**  
SCALE: 3/8" = 1'-0"

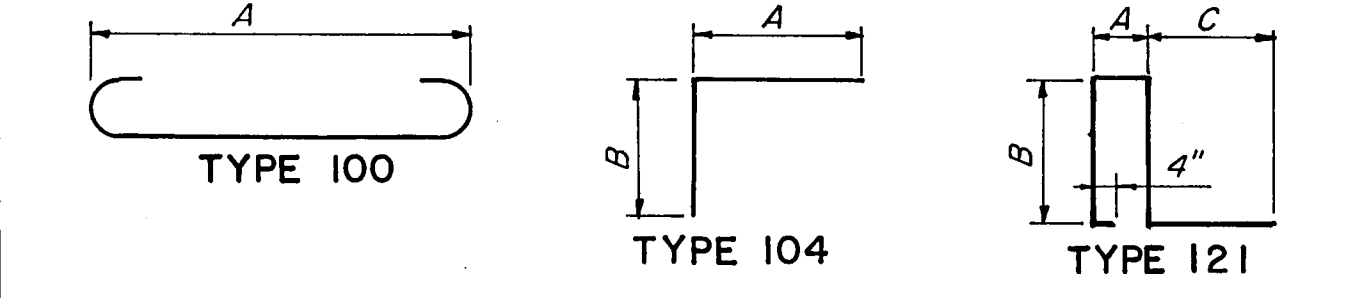
NOTE: Steps for Junction Box shall be placed at intervals of 16 inches as directed by the Engineer in Charge and shall conform to Bass and Hayes Foundry, Inc. Standard Manhole Pattern No. 90 or equal.



**BILL OF REINFORCING STEEL**

MARK	NO	LENGTH	TYPE	DIMENSIONS				WEIGHT
				A	B	C	D or R	
401	6	21'-6"	Str.					86
402	18	20'-5"	Str.					246
403	22	7'-9"	Str.					114
501	24	22'-0"	Str.					551
502	92	11'-1"	Str.					1063
503	22	8'-6"	121	0'-5"	3'-0"	1'-9"		195
504	68	9'-2"	Str.					650
505	87	5'-0"	104	2'-6"	2'-6"			453
506	64	3'-0"	Str.					201
507	12	9'-6"	Str.					119
601	72	8'-0"	104	4'-0"	4'-0"			865
602	60	11'-1"	Str.					999
801	46	24'-0"	100	22'-0"				2948
802	34	5'-0"	Str.					454
Total Lbs.								8944

**BAR BENDING DIAGRAMS**



Note: Bar Dimensions are given out to out of Bar. Diameters are given to inside of Curve.

**ESTIMATED QUANTITY SUMMARY**

ITEM NO.	DESCRIPTION	UNIT	QUANTITY
* 421	Concrete - Class C	CY	33.7
* 440	Reinforcing Steel	Lbs.	8944
* 471	Manhole & Frame Cover - Type B	Ea.	1

NOTES:  
 \* Quantities are for Contractor's information only.  
 Concrete to be Class C.  
 Reinforcing Steel to Conform to ASTM - A-615 Grade 60.  
 All exposed corners to be chamfered 3/4".  
 All reinforcing steel shall have a minimum cover of 1 1/2 inches.

NO.	REVISION	BY	DATE
<b>TEXAS TURNPIKE AUTHORITY</b> <b>DALLAS NORTH TOLLWAY</b> <b>JUNCTION BOX DETAILS</b> <b>STA 678 + 20</b>			
<b>Gibbs &amp; Hill, Inc.</b> <small>ENGINEERS DESIGNERS CONSTRUCTORS</small> <small>DALLAS</small>			<b>SECTION VII</b>
DRAWN	DATE	DESIGNED	DATE
MAV	1/9/84	HS	1/4/84
CHECKED	DATE	SCALE	
HS	1/31/84	As Shown	
<b>CONTRACT NO. DNT-115 SHEET R72 OF R85</b>			