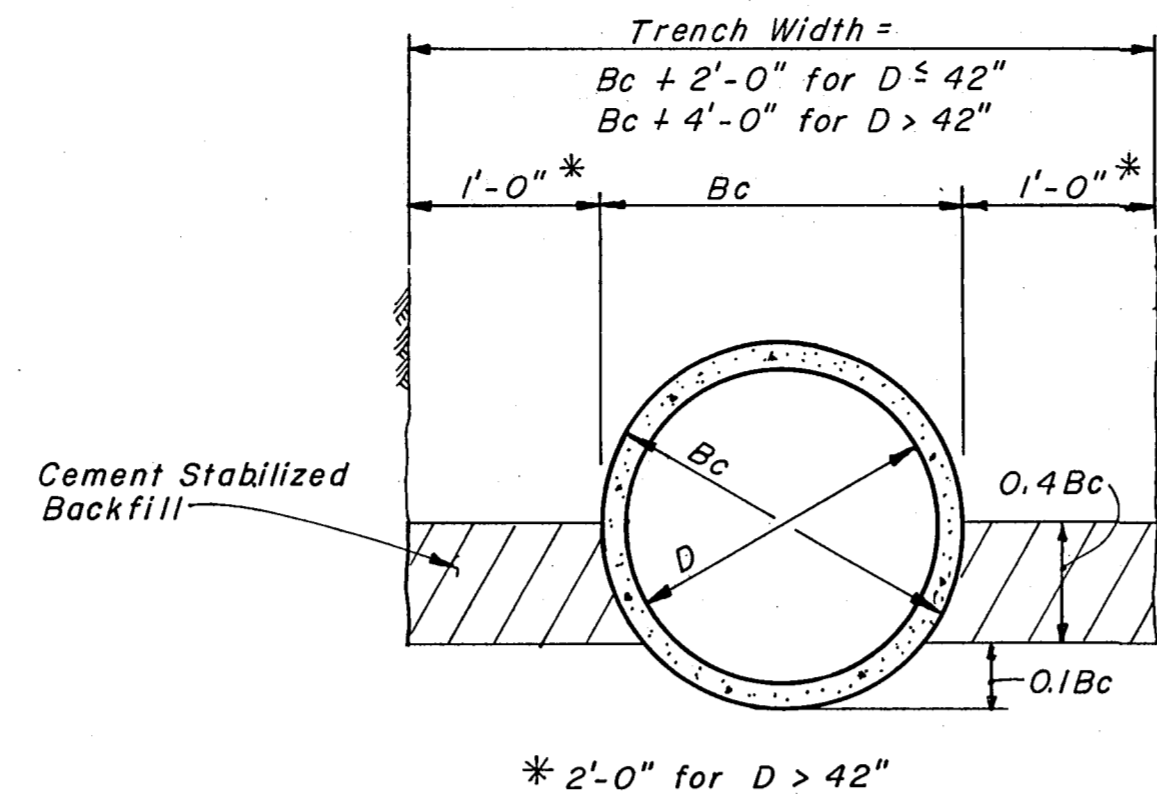


SLOTTED DRAIN DETAIL FOR REINFORCED CONCRETE PAVEMENT

NOTES: Slotted drain is manufactured in 20' lengths. Installations should be multiples of 20' or half-length sections of 10'. Slotted drains shall be connected to storm drain laterals by standard bends, connecting bands and the required length and size of corrugated metal pipe. The extra concrete for the thickened pavement shall be included in the cost of the drain. Paving details shown are for use with 6" deep grate on slotted drain. Heel plate shall be installed according to manufacturer's recommendations.



CEMENT STABILIZED BACKFILL

LOCATIONS OF MEDIAN MOUNTED LIGHT POLES

40 FT. MOUNTING HEIGHT	
639+82	693+28
642+14	695+78
644+46	698+28
646+78	700+78
655+78	703+28
658+28	705+78
660+78	707+92
663+28	710+06
665+78	712+20
668+28	714+34
670+78	716+48
673+28	718+62
675+78	720+78
678+28	723+28
680+78	725+78
682+78	728+28
684+78	730+78
686+78	733+28
688+78	735+78
690+78	

LOCATIONS OF GROUND MOUNTED LIGHT POLES

MAINLINE TERMINATION

25 FT. MOUNTING HEIGHT	
734+50	NORTHBOUND
737+09	SOUTHBOUND
738+40	SOUTHBOUND

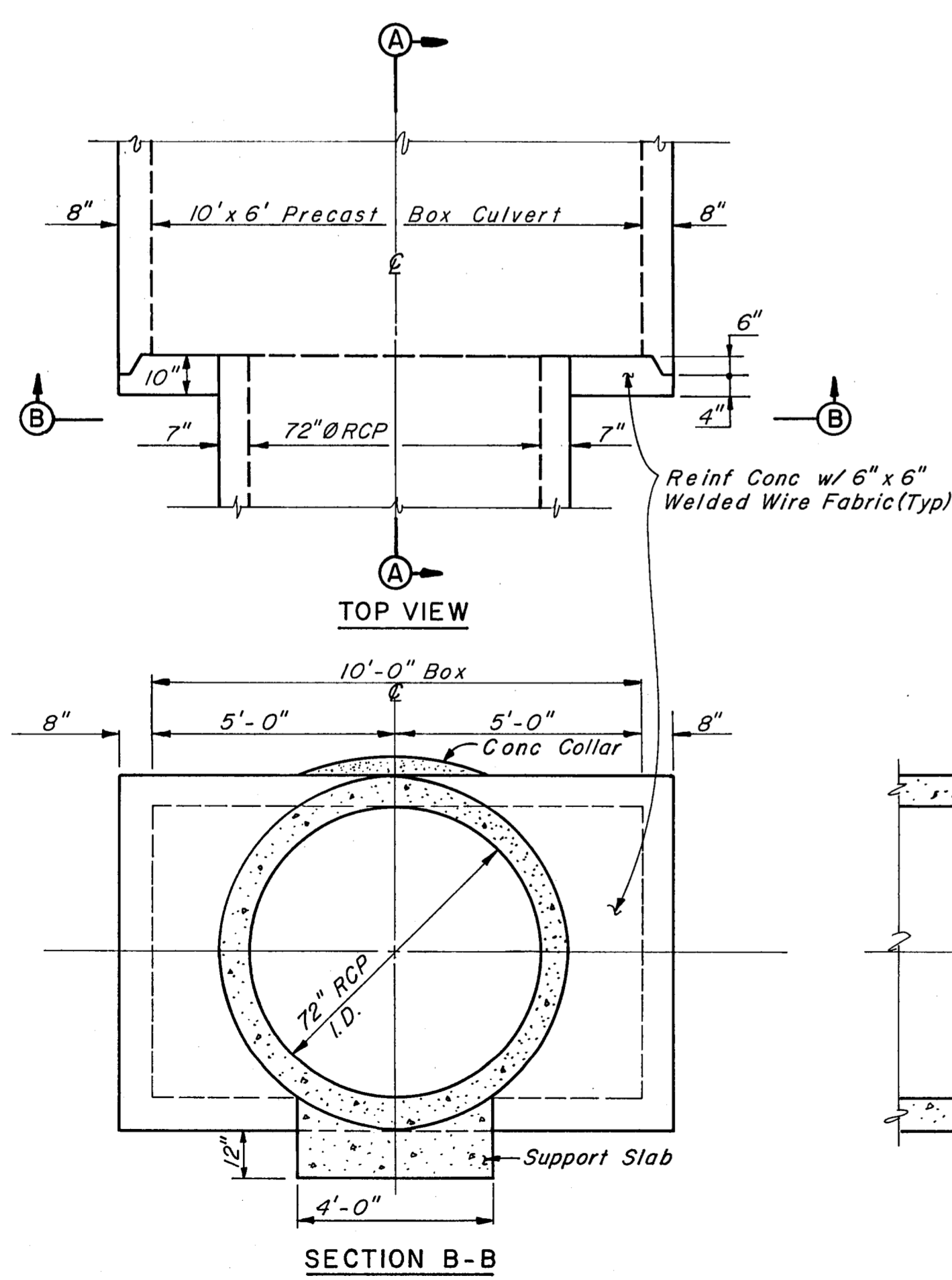
MAIN TOLL PLAZA

35.0 FT. MOUNTING HEIGHT	
NORTHBOUND:	SOUTHBOUND:
648+49*	648+49*
650+19*	650+19*
652+37*	652+37*
654+07*	654+07*
3+04	3+15

* WITH 2 FLOOD LIGHTS

NOTE: SEE STANDARD DRAWING NO. 32 FOR DETAILS OF MEDIAN MOUNTED LIGHT POLE LOCATIONS. MEDIAN LIGHT POLE LOCATIONS ARE SHOWN ONLY TO INDICATE LOCATIONS OF TYPE 2 CONCRETE TRAFFIC BARRIER. LIGHT POLES WILL BE INSTALLED BY OTHERS.

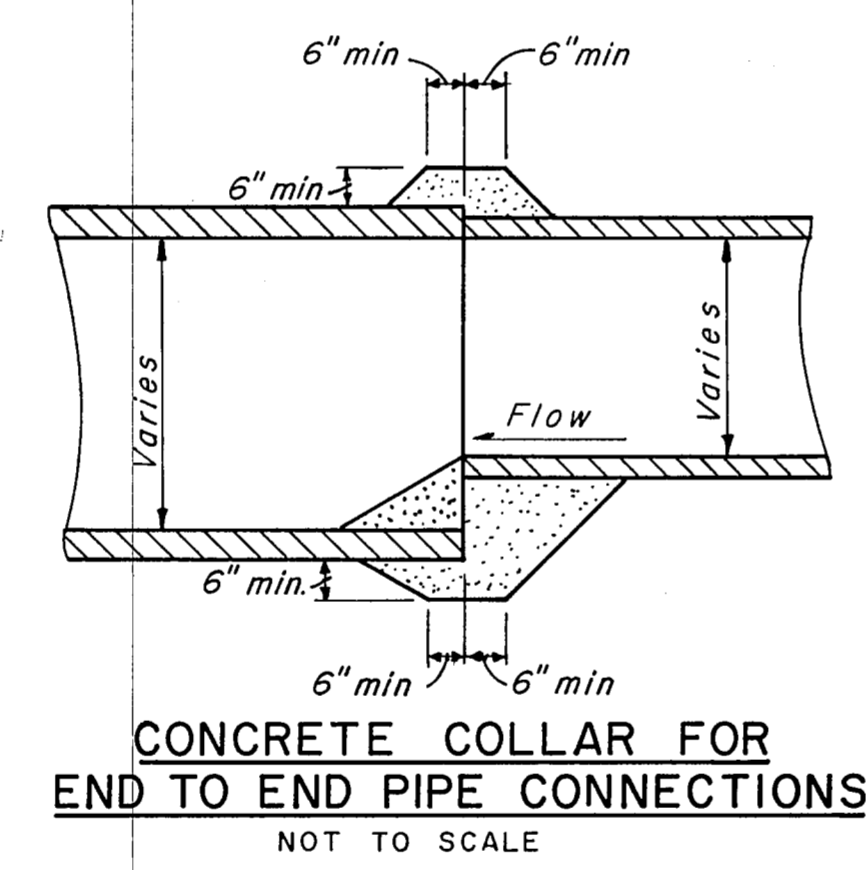
NOTE: LOCATIONS OF GROUND MOUNTED LIGHT POLES ARE SUPPLIED FOR CONTRACTOR'S INFORMATION ONLY. INSTALLATION WILL BE BY OTHERS.



PIPE TO BOX CULVERT CONNECTION

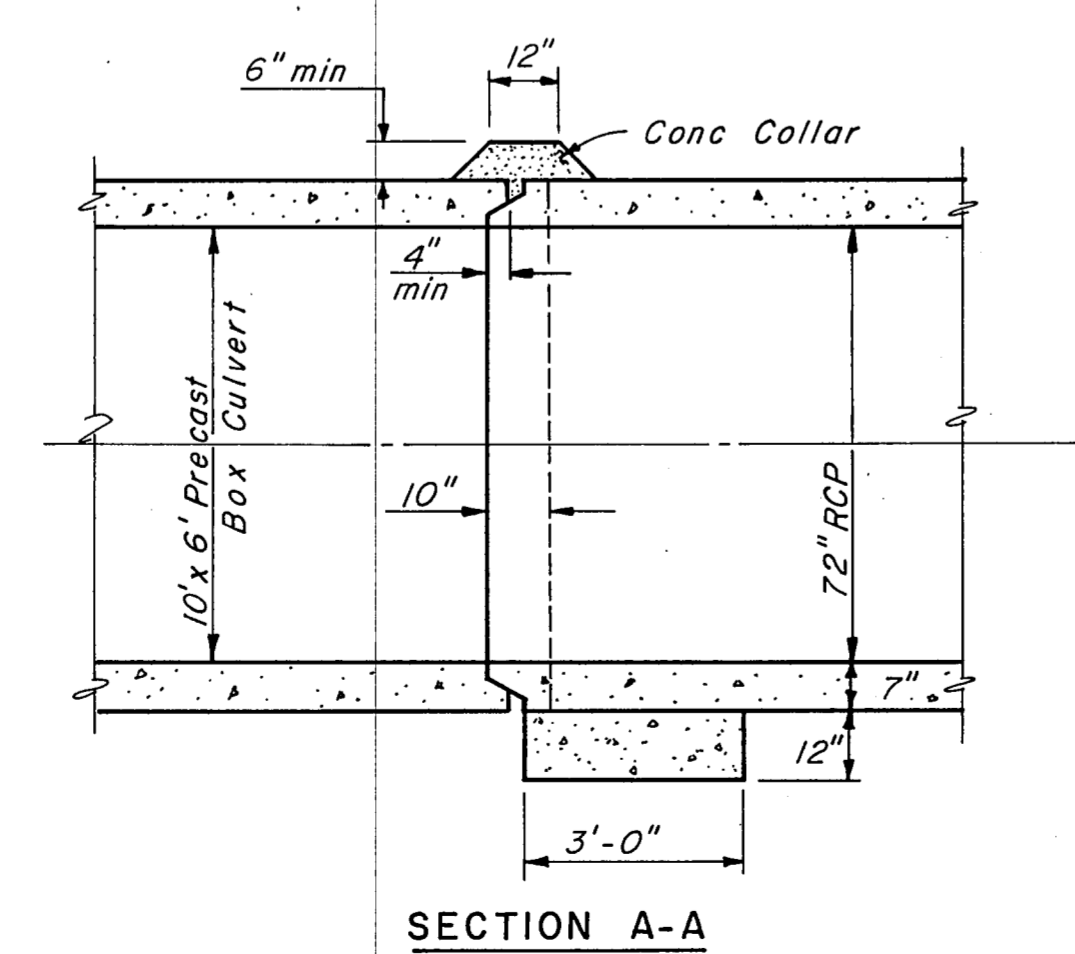
SCALE: 3/8" = 1'-0"

Note: See Sheets R10 & R58 For Location



CONCRETE COLLAR FOR END TO END PIPE CONNECTIONS

NOT TO SCALE



SECTION A-A

NO.	REVISION	BY	DATE
TEXAS TURNPIKE AUTHORITY DALLAS NORTH TOLLWAY			
MISCELLANEOUS DETAILS DRAINAGE & LIGHTING			
Gibbs & Hill, Inc. ENGINEERS DESIGNERS CONSTRUCTORS DALLAS			SECTION VII
DRAWN	VER	DATE	4/21/84
DESIGNED	DWC	DATE	4/19/84
CHECKED	DWC	DATE	5/8/84
SCALE		As Shown	
CONTRACT NO. DNT-115 SHEET R74 OF R85			