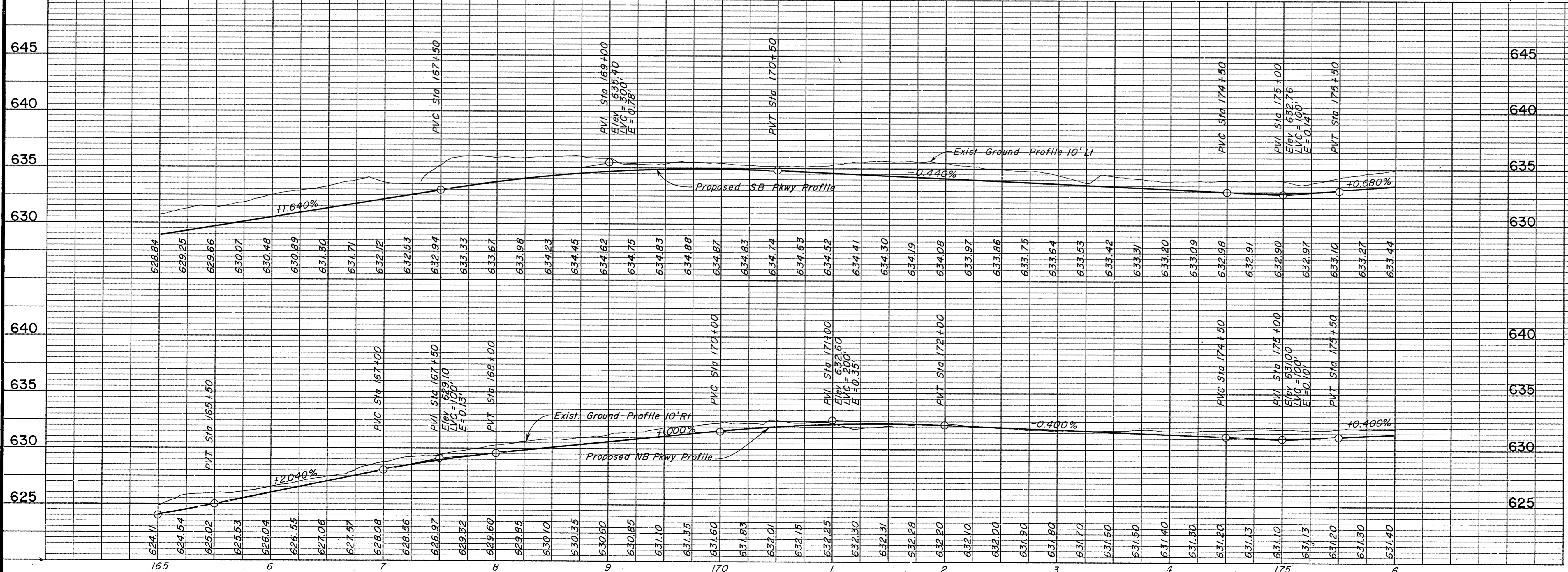


LEGEND

- Drainage Structures to be constructed under Phases I & II
- Drainage Structures to be constructed under Phase III
- Existing Drainage Structures

See Sheet R36 for Definition of Phases I, II, and III

Bench Mark #10
Chiseled "L" on center of inlet on west side on Knoll Trail Drive, 1850' north of Westgrove Drive, 20' south of power pole (#14N 2W 68) and 400' east of Dallas Parkway.
Elevation: 630.40



NOTES:

- See Sheet R21 for Tollway Plan & Profile.
- See Sheets W11 - W12 for Retaining Wall Details
- See the following Sheets for Storm Sewer Profiles:

Line	Sheet
K	R59
P	R57

4. For Slopes See Cross Sections.

ASBUILT PLANS

As Built	C.B.		
Deleted Inter K21	MGB 4/11/85		
Revised Storm Sewer Line "K" Alignment	MGB 3/14/85		
NO.	REVISION	BY	DATE

TEXAS TURNPIKE AUTHORITY
DALLAS NORTH TOLLWAY

PAVING AND GRADING
DALLAS PARKWAY
STA 165+00 TO STA 176+00

Gibbs & Hill, Inc.
ENGINEERS DESIGNERS CONSTRUCTORS
DALLAS

SECTION VII

DRAWN CJB DATE 4/5/83 DESIGNED DWC DATE 4/1/83
CHECKED DWC DATE 5/7/84 SCALE 1"=50' Hor. 1"=5' Vert

CONTRACT NO. DNT-115 SHEET R11 OF R85