

Curve KS-N7
PI Sta 10 + 6477.7
N 475479.702
E 2208244.252
Δ = 2°30'17"
D = 4°01'30"
R = 1423.54'
T = 31.12'
L = 62.23'

Curve KS-N8
PI Sta 14 + 0149.9
N 475794.785
E 2208212.039
Δ = 2°26'40"
D = 2343.83'
T = 201.30'
L = 401.61'

Curve KS-N9
PI Sta 17 + 136.47
N 476118.291
E 2208121.382
Δ = 16°36'33"
D = 6°12'37"
R = 922.61'
T = 134.67'
L = 267.45'

Curve T 2A
PI Sta 678 + 10.96
N 475652.180
E 2208198.000
Δ = 16°37'26"
D = 2°30'00"
R = 2291.83'
T = 334.83'
L = 664.95'

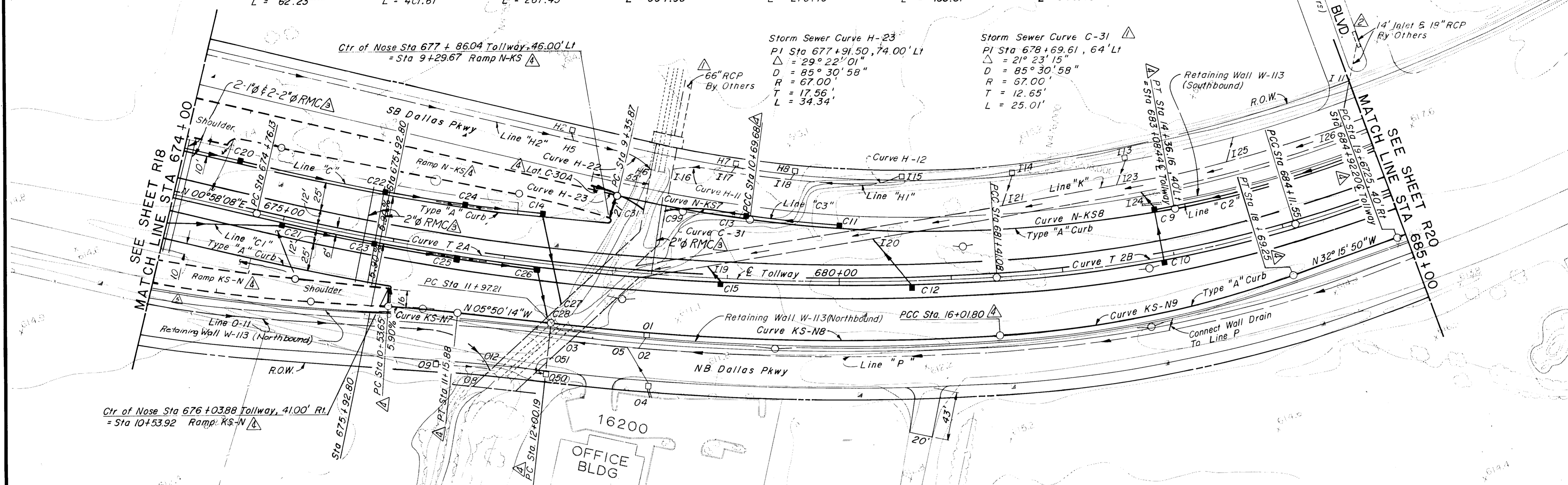
Curve T 2B
PI Sta 682 + 76.95
N 476105.410
E 2208070.988
Δ = 13°31'23"
D = 3°00'00"
R = 1145.92'
T = 135.86'
L = 270.46'

Curve N-KS7
PI Sta 10 + 02.85
N 475694.783
E 2208110.207
Δ = 6°46'28"
D = 5°03'46"
R = 1131.70'
T = 66.98'
L = 133.81'

Curve N-KS8
PI Sta 12 + 54.21
N 475945.009
E 2208084.765
Δ = 16°37'13"
D = 04832.06"
R = 1263.38'
T = 184.53'
L = 366.48'

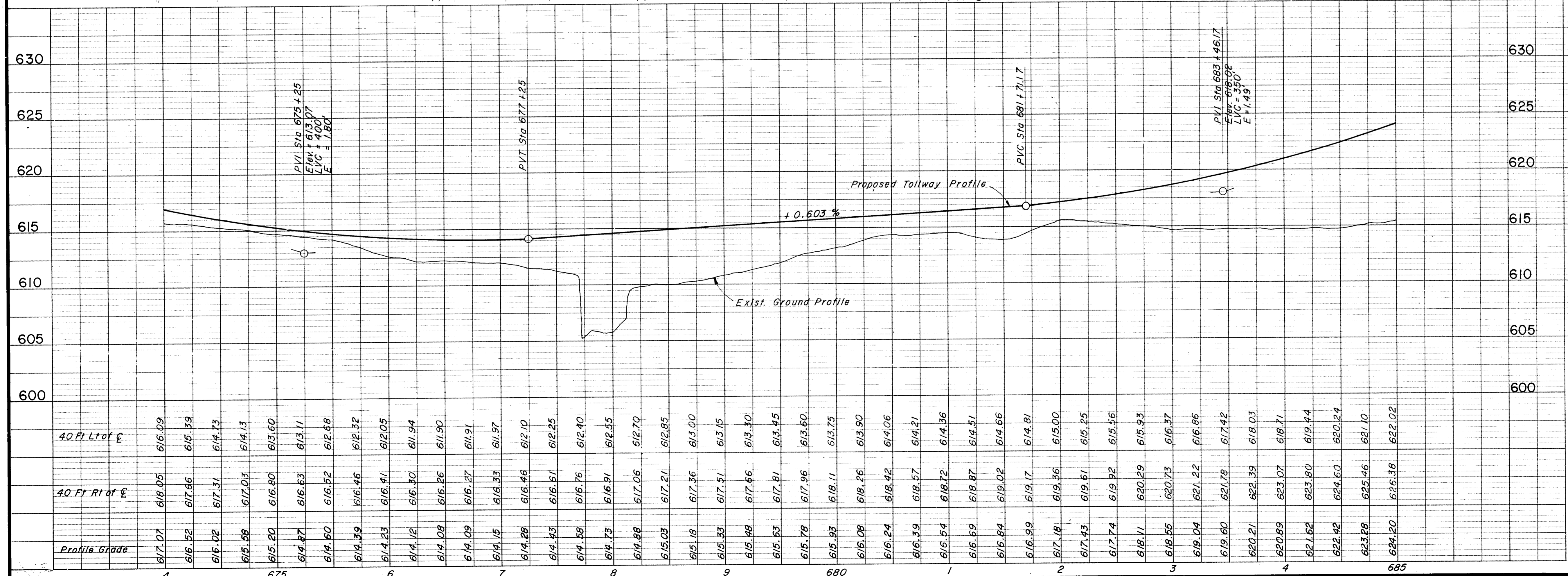
Storm Sewer Curve H-23
PI Sta 677 + 91.50, 74.00' Lt
Δ = 29°22'01"
D = 85°30'58"
R = 67.00'
T = 17.56'
L = 34.34'

Storm Sewer Curve C-31
PI Sta 678 + 69.61, 64' Lt
Δ = 21°23'15"
D = 85°30'58"
R = 67.00'
T = 12.65'
L = 25.01'



LEGEND
 Drainage Structures to be constructed under Phase III
 Drainage Structures constructed under Phase I & II
 Existing Drainage Structures
 See Sheet R35 for Definition of Phases I, II, & III.

Bench Mark #9
Chiseled "a" on northeast corner of 2nd inlet on south side of Westgrove Drive, 500' west of Dallas Parkway.
Elevation: 620.80



NOTES:
 1. See Sheet R9 for Dallas Parkway Plan & Profile for Removals.
 2. See Sheets R70 - R72 for Box Culvert Details.
 3. See Sheets R30 - R31 for Ramp Paving Plans.
 4. See the following Sheets for Storm Sewer Profiles:

| Line | Sheet |
|-------|-------|
| C, C1 | R 55 |
| C3 | R 56 |
| K | R 38 |
| C2 | R 53 |

 5. See Sheets W6 - W8 for Reinforcing Wall Details.
 6. For Shoulder and Median Barrier Details See Typical Sections.

ASBUILT PLANS

| | | |
|--|-----|---------|
| AsBuilt | PJ | 3-8-88 |
| Revise Ramps | GMO | 7-1-86 |
| Added Conduit | JTK | 2-20-86 |
| Replaced Inlet I-II with Inlet and Lateral By Others | MGB | 2-7-85 |
| Junction Box Widened and 2-10'x6' Conc Box Extended to Match | MGB | 2-7-85 |

TEXAS TURNPIKE AUTHORITY
DALLAS NORTH TOLLWAY
 PAVING AND GRADING
 TOLLWAY
 STA 674+00 TO STA 685+00
Gibbs & Hill, Inc.
 ENGINEERS DESIGNERS CONSTRUCTORS
 DALLAS
SECTION VII
 DRAWN VER DATE 9-14-83 DESIGNED DWC DATE 8-29-83
 CHECKED DWC DATE 5-4-84 SCALE 1"=50' Hor 1"=5' Vert
 CONTRACT NO. DNT-115 SHEET R19 OF R85