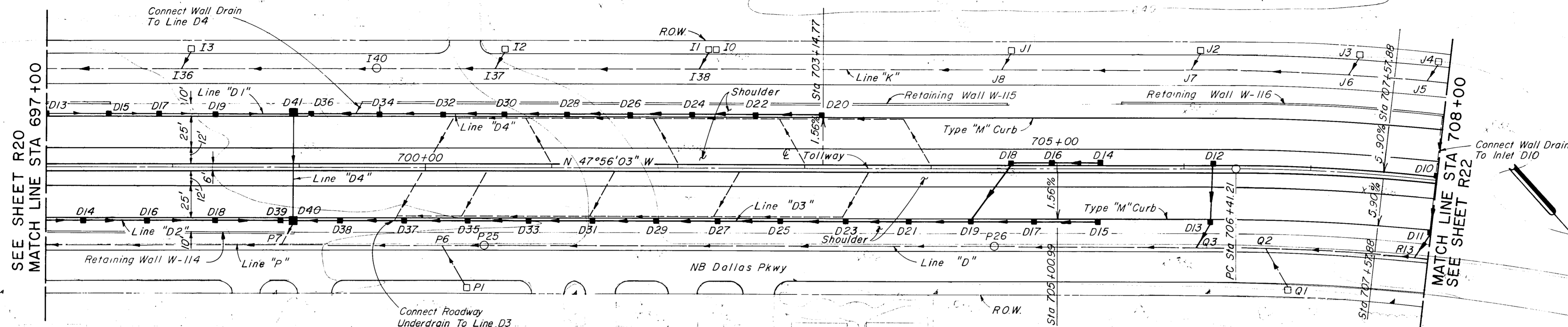


TWO BENT TREE TOWER
16479



CROWN CENTRE
16816

POLITICAL RESEARCH
16850

16910

16950

BENT TREE TERRACES
16970

16990

LEGEND

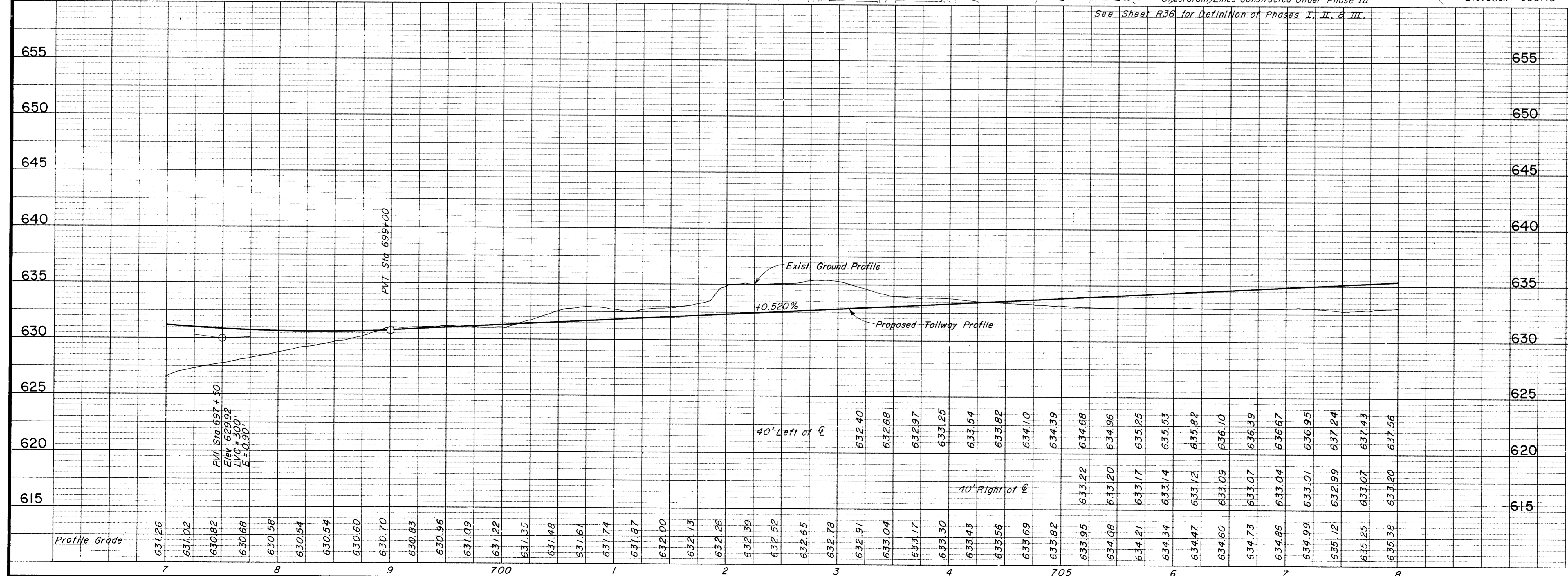
- Drainage Structures to be constructed under Phase III
- Drainage Structures constructed under Phase I & II
- Existing Drainage Structures
- Underdrain Lines Constructed Under Phase III

See Sheet R36 for Definition of Phases I, II, & III.

Bench Mark #10
Chiseled "o" on center of inlet on west side on Knoll Trail Drive, 1850' north of Westgrove Drive, 20' south of power pole (#14N 2W 68) and 400' east of Dallas Parkway.
Elevation: 630.40

- NOTES:
- See Sheet R11 for Dallas Parkway Plan & Profile for Removals.
 - See Sheets W11 - W12 for Retaining Wall Details.
 - See Sheets R62 - R63 for Storm Sewer Profiles.
 - For Shoulder and Median Barrier Details See Typical Sections.

ASBUILT PLANS



NO.	REVISION	BY	DATE
TEXAS TURNPIKE AUTHORITY DALLAS NORTH TOLLWAY			
PAVING AND GRADING TOLLWAY STA 697+00 TO STA 708+00			
Gibbs & Hill, Inc. <small>ENGINEERS DESIGNERS CONSTRUCTORS DALLAS</small>			SECTION VII
<small>DRAWN</small> VER <small>CHECKED</small> DW	<small>DATE</small> 7/8/83 <small>DATE</small> 5/4/84	<small>DESIGNED</small> DW <small>DATE</small> 6/30/83	<small>SCALE</small> 1"=50' Hor 1"=5' Vert
CONTRACT NO. DNT-115 SHEET R21 OF R85			