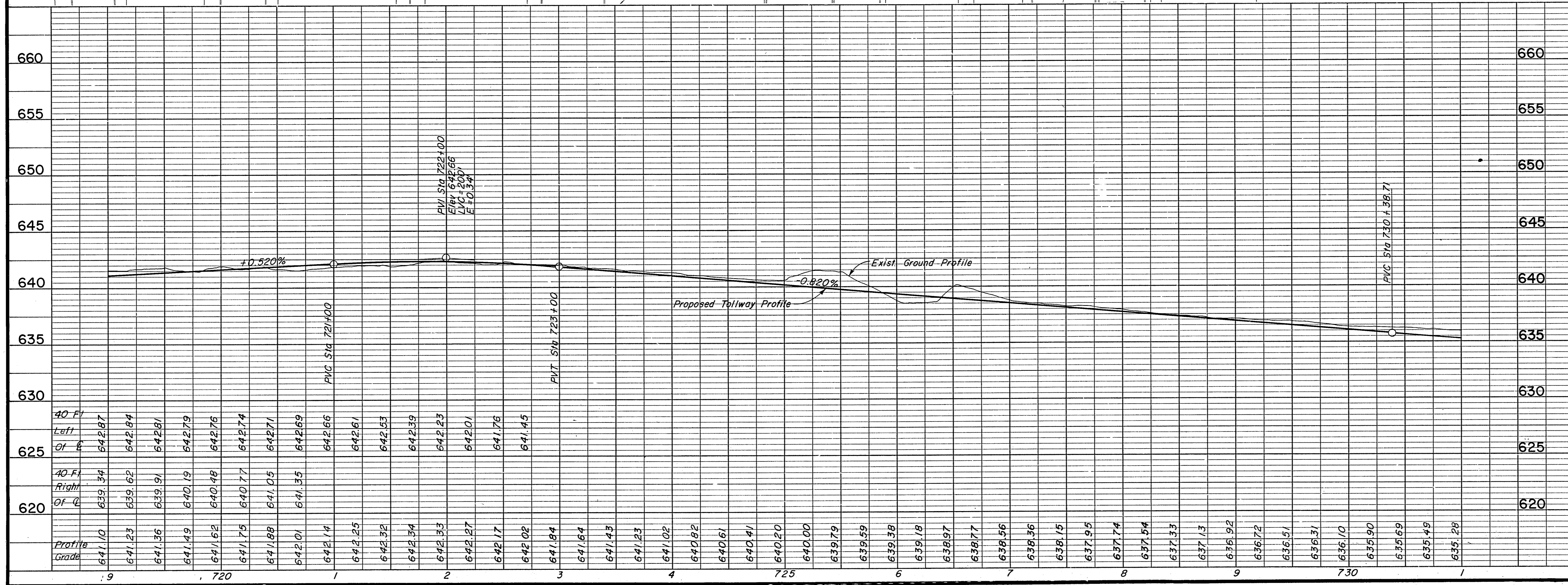


**LEGEND**

- Drainage Structures to be constructed under Phase III
- Drainage Structures constructed under Phase I & II
- Existing Drainage Structures

See Sheet R37 for Definition of Phase I, II, and III.

**Bench Mark #11**  
 Chiseled "a" on the back of curb at the southwest corner of a handicap ramp in the parking lot of the Wylain Building, 275' south of Knoll Trail Drive and 125' east of Dallas Parkway.  
 Elevation: 636.26



- NOTES**
- See Sheet R13 for Dallas Parkway Plan & Profile for Removals.
  - See the following Sheets for Storm Sewer Profiles:
 

Line	Sheet
D	R 62
E, E2	R 63
  - For Shoulder and Median Barrier Details See Typical Sections.

**ASBUILT PLANS**

NO.	REVISION	BY	DATE
<b>TEXAS TURNPIKE AUTHORITY</b>			
<b>DALLAS NORTH TOLLWAY</b>			
<b>PAVING AND GRADING</b>			
<b>TOLLWAY</b>			
<b>STA 719+00 TO STA 731+00</b>			
<b>Gibbs &amp; Hill, Inc.</b>			<b>SECTION VII</b>
<small>ENGINEERS DESIGNERS CONSTRUCTORS DALLAS</small>			
<small>DRAWN</small> VER	<small>DATE</small> 7/8/83	<small>DESIGNED</small> DWC	<small>DATE</small> 6/30/83
<small>CHECKED</small> DWC	<small>DATE</small> 5/4/84	<small>SCALE</small> 1"=50' Hor. 1"=5' Vert.	
<b>CONTRACT NO. DNT-115 SHEET R23 OF R85</b>			