

CURVE TM-S 4
 PI Sta 9+79.490
 N 481222.811
 E 2205949.271
 $\Delta = 8^\circ 12' 54.7''$
 $D = 5^\circ 00' 00.0''$
 $R = 1145.916'$
 $T = 82.293'$
 $L = 164.304'$

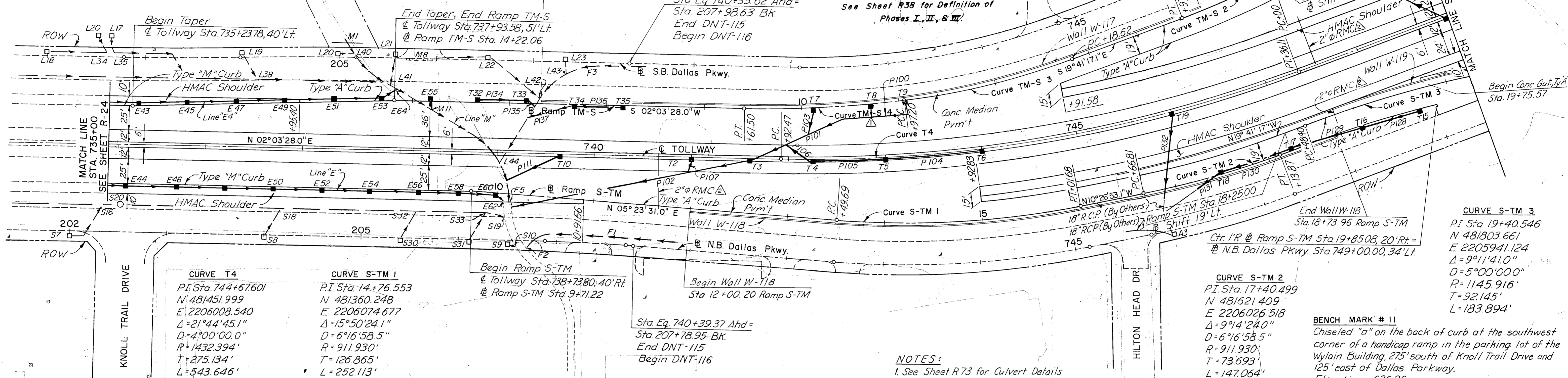
CURVE TM-S 3
 PI Sta 8+08.324
 N 481393.819
 E 2205930.823
 $\Delta = 13^\circ 31' 50.4''$
 $D = 7^\circ 34' 36.6''$
 $R = 756.198'$
 $T = 89.707'$
 $L = 178.580'$

CURVE TM-S 2
 PI Sta 5+48.952
 N 481638.108
 E 2205843.412
 $\Delta = 5^\circ 52' 09.0''$
 $D = 6^\circ 00' 00.0''$
 $R = 954.930'$
 $T = 48.952'$
 $L = 97.819'$

End Wall W-119
 Sta. 4+27.59 Ramp TM-S
 Ctr. I/R @ Ramp TM-S Sta 5+00.00
 @ S.B. Dallas Pkwy Sta 747+00.00, 34' RT.

LEGEND

- Drainage Structures to be constructed under Phase III
 - Drainage Structures constructed under Phase I & II
 - Existing Drainage Structures
- See Sheet R38 for Definition of Phases I, II, & III.



CURVE T4
 PI Sta 744+67601
 N 481451.999
 E 2206008.540
 $\Delta = 21^\circ 44' 45.1''$
 $D = 4^\circ 00' 00.0''$
 $R = 1432.394'$
 $T = 275.134'$
 $L = 543.646'$

CURVE S-TM 1
 PI Sta 14+76.553
 N 481360.248
 E 2206074.677
 $\Delta = 15^\circ 50' 24.1''$
 $D = 6^\circ 16' 58.5''$
 $R = 911.930'$
 $T = 126.865'$
 $L = 252.113'$

CURVE S-TM 2
 PI Sta 17+40.499
 N 481521.409
 E 2206026.518
 $\Delta = 9^\circ 14' 24.0''$
 $D = 6^\circ 16' 58.5''$
 $R = 911.930'$
 $T = 73.693'$
 $L = 147.064'$

CURVE S-TM 3
 PI Sta 19+40.546
 N 481803.661
 E 2205941.124
 $\Delta = 9^\circ 11' 41.0''$
 $D = 5^\circ 00' 00.0''$
 $R = 1145.916'$
 $T = 92.145'$
 $L = 183.894'$

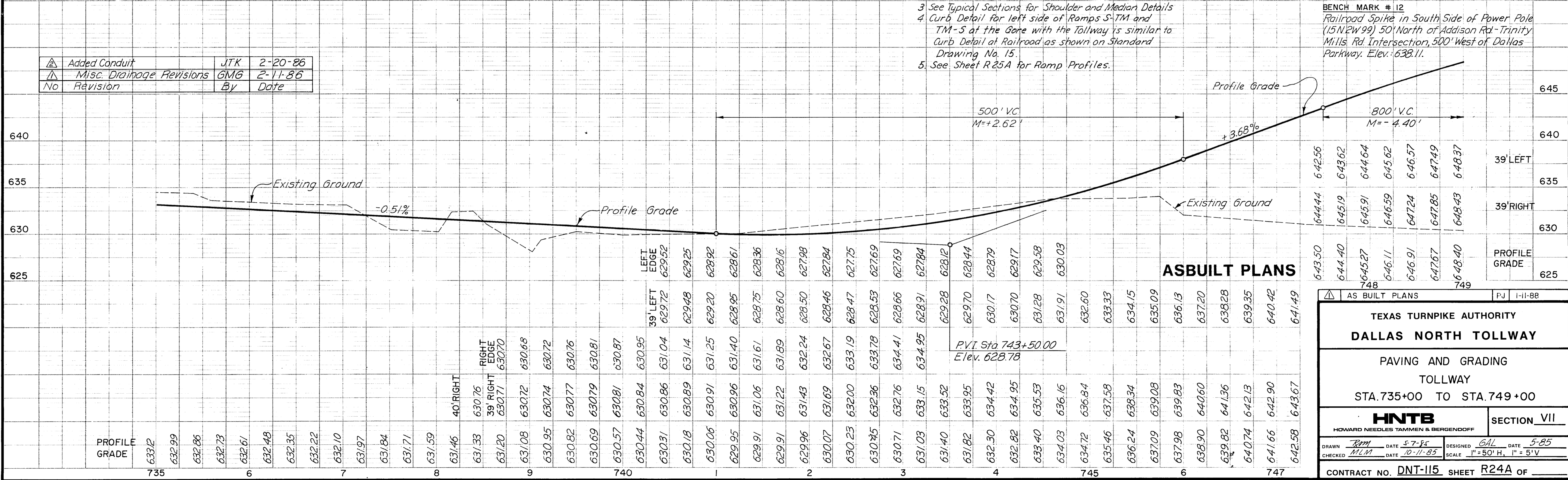
NOTES:

1. See Sheet R 73 for Culvert Details
2. See Sheet R 65 & R 67A for Storm Sewer Profiles.
3. See Typical Sections for Shoulder and Median Details
4. Curb Detail for left side of Ramps S-TM and TM-S at the Gate with the Tollway is similar to Curb Detail at Railroad as shown on Standard Drawing No. 15.
5. See Sheet R 25A for Ramp Profiles.

BENCH MARK # 11
 Chiseled "a" on the back of curb at the southwest corner of a handicap ramp in the parking lot of the Wylain Building, 275' south of Knoll Trail Drive and 125' east of Dallas Parkway. Elevation 636.26.

BENCH MARK # 12
 Railroad Spike in South Side of Power Pole (15N2W99) 50' North of Addison Rd - Trinity Mills Rd Intersection, 500' West of Dallas Parkway. Elev: 638.11.

▲	Added Conduit	JTK	2-20-86
▲	Misc. Drainage Revisions	GMG	2-11-86
No	Revision	By	Date



ASBUILT PLANS

STATION	LEFT EDGE	RIGHT EDGE	PROF. GRADE
735	629.72	630.76	633.12
736	629.72	630.76	632.99
737	629.72	630.76	632.86
738	629.72	630.76	632.73
739	629.72	630.76	632.61
740	629.72	630.76	632.48
741	629.72	630.76	632.35
742	629.72	630.76	632.22
743	629.72	630.76	632.10
744	629.72	630.76	631.97
745	629.72	630.76	631.84
746	629.72	630.76	631.71
747	629.72	630.76	631.59
748	629.72	630.76	631.46
749	629.72	630.76	631.33
750	629.72	630.76	631.20
751	629.72	630.76	631.08
752	629.72	630.76	630.95
753	629.72	630.76	630.82
754	629.72	630.76	630.69
755	629.72	630.76	630.57
756	629.72	630.76	630.44
757	629.72	630.76	630.31
758	629.72	630.76	630.18
759	629.72	630.76	630.06
760	629.72	630.76	629.95
761	629.72	630.76	629.82
762	629.72	630.76	629.69
763	629.72	630.76	629.57
764	629.72	630.76	629.44
765	629.72	630.76	629.31
766	629.72	630.76	629.18
767	629.72	630.76	629.06
768	629.72	630.76	628.95
769	629.72	630.76	628.82
770	629.72	630.76	628.70
771	629.72	630.76	628.57
772	629.72	630.76	628.44
773	629.72	630.76	628.31
774	629.72	630.76	628.18
775	629.72	630.76	628.06
776	629.72	630.76	627.93
777	629.72	630.76	627.80
778	629.72	630.76	627.67
779	629.72	630.76	627.54
780	629.72	630.76	627.41
781	629.72	630.76	627.28
782	629.72	630.76	627.15
783	629.72	630.76	627.02
784	629.72	630.76	626.89
785	629.72	630.76	626.76
786	629.72	630.76	626.63
787	629.72	630.76	626.50
788	629.72	630.76	626.37
789	629.72	630.76	626.24
790	629.72	630.76	626.11
791	629.72	630.76	625.98
792	629.72	630.76	625.85
793	629.72	630.76	625.72
794	629.72	630.76	625.59
795	629.72	630.76	625.46
796	629.72	630.76	625.33
797	629.72	630.76	625.20
798	629.72	630.76	625.07
799	629.72	630.76	624.94
800	629.72	630.76	624.81
801	629.72	630.76	624.68
802	629.72	630.76	624.55
803	629.72	630.76	624.42
804	629.72	630.76	624.29
805	629.72	630.76	624.16
806	629.72	630.76	624.03
807	629.72	630.76	623.90
808	629.72	630.76	623.77
809	629.72	630.76	623.64
810	629.72	630.76	623.51
811	629.72	630.76	623.38
812	629.72	630.76	623.25
813	629.72	630.76	623.12
814	629.72	630.76	622.99
815	629.72	630.76	622.86
816	629.72	630.76	622.73
817	629.72	630.76	622.60
818	629.72	630.76	622.47
819	629.72	630.76	622.34
820	629.72	630.76	622.21
821	629.72	630.76	622.08
822	629.72	630.76	621.95
823	629.72	630.76	621.82
824	629.72	630.76	621.69
825	629.72	630.76	621.56
826	629.72	630.76	621.43
827	629.72	630.76	621.30
828	629.72	630.76	621.17
829	629.72	630.76	621.04
830	629.72	630.76	620.91
831	629.72	630.76	620.78
832	629.72	630.76	620.65
833	629.72	630.76	620.52
834	629.72	630.76	620.39
835	629.72	630.76	620.26
836	629.72	630.76	620.13
837	629.72	630.76	620.00
838	629.72	630.76	619.87
839	629.72	630.76	619.74
840	629.72	630.76	619.61
841	629.72	630.76	619.48
842	629.72	630.76	619.35
843	629.72	630.76	619.22
844	629.72	630.76	619.09
845	629.72	630.76	618.96
846	629.72	630.76	618.83
847	629.72	630.76	618.70
848	629.72	630.76	618.57
849	629.72	630.76	618.44
850	629.72	630.76	618.31
851	629.72	630.76	618.18
852	629.72	630.76	618.05
853	629.72	630.76	617.92
854	629.72	630.76	617.79
855	629.72	630.76	617.66
856	629.72	630.76	617.53
857	629.72	630.76	617.40
858	629.72	630.76	617.27
859	629.72	630.76	617.14
860	629.72	630.76	617.01
861	629.72	630.76	616.88
862	629.72	630.76	616.75
863	629.72	630.76	616.62
864	629.72	630.76	616.49
865	629.72	630.76	616.36
866	629.72	630.76	616.23
867	629.72	630.76	616.10
868	629.72	630.76	615.97
869	629.72	630.76	615.84
870	629.72	630.76	615.71
871	629.72	630.76	615.58
872	629.72	630.76	615.45
873	629.72	630.76	615.32
874	629.72	630.76	615.19
875	629.72	630.76	615.06
876	629.72	630.76	614.93
877	629.72	630.76	614.80
878	629.72	630.76	614.67
879	629.72	630.76	614.54
880	629.72	630.76	614.41
881	629.72	630.76	614.28
882	629.72	630.76	614.15
883	629.72	630.76	614.02
884	629.72	630.76	613.89
885	629.72	630.76	613.76
886	629.72	630.76	613.63
887	629.72	630.76	613.50
888	629.72	630.76	613.37
889	629.72	630.76	613.24
890	629.72	630.76	613.11
891	629.72	630.76	612.98
892	629.72	630.76	612.85
893	629.72	630.76	612.72
894	629.72	630.76	612.59
895	629.72	630.76	612.46
896	629.72	630.76	612.33
897	629.72	630.76	612.20
898	629.72	630.76	612.07
899	629.72	630.76	611.94
900	629.72	630.76	611.81

AS BUILT PLANS PJ I-II-88

TEXAS TURNPIKE AUTHORITY
DALLAS NORTH TOLLWAY
 PAVING AND GRADING
 TOLLWAY
 STA. 735+00 TO STA. 749+00

HNTB
 HOWARD NEEDLES TAMMEN & BERGENDOFF

SECTION VII

DRAWN *RJM* DATE 5-7-85 DESIGNED *GAL* DATE 5-85
 CHECKED *MLM* DATE 10-11-85 SCALE 1"=50' H, 1"=5' V

CONTRACT NO. DNT-115 SHEET R24A OF