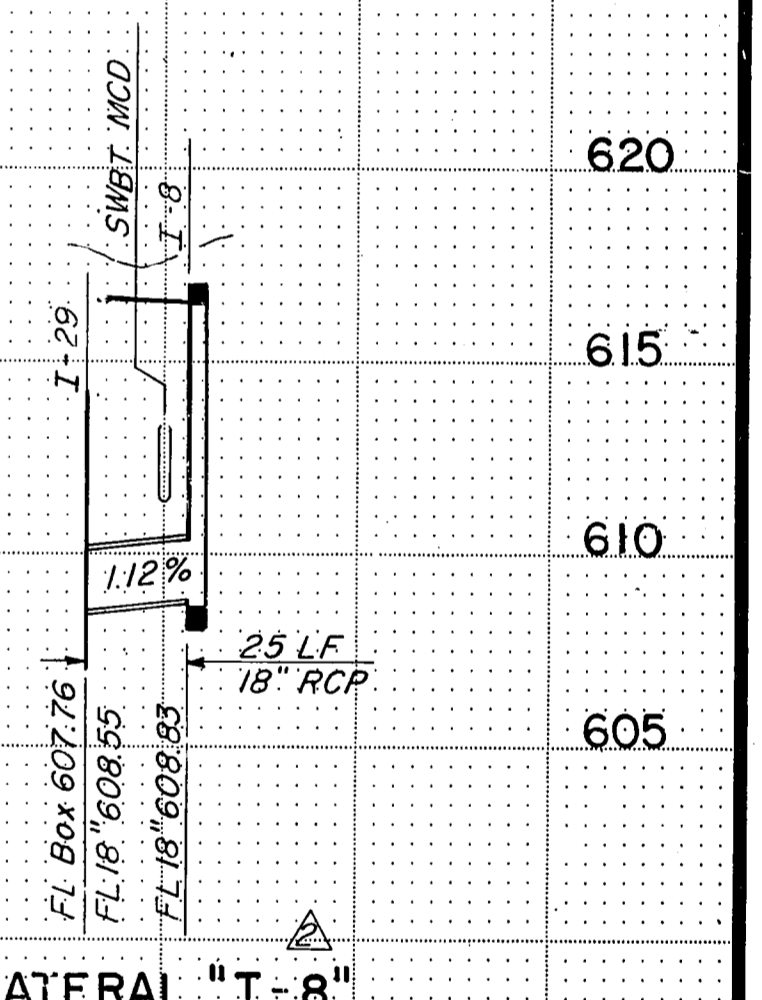
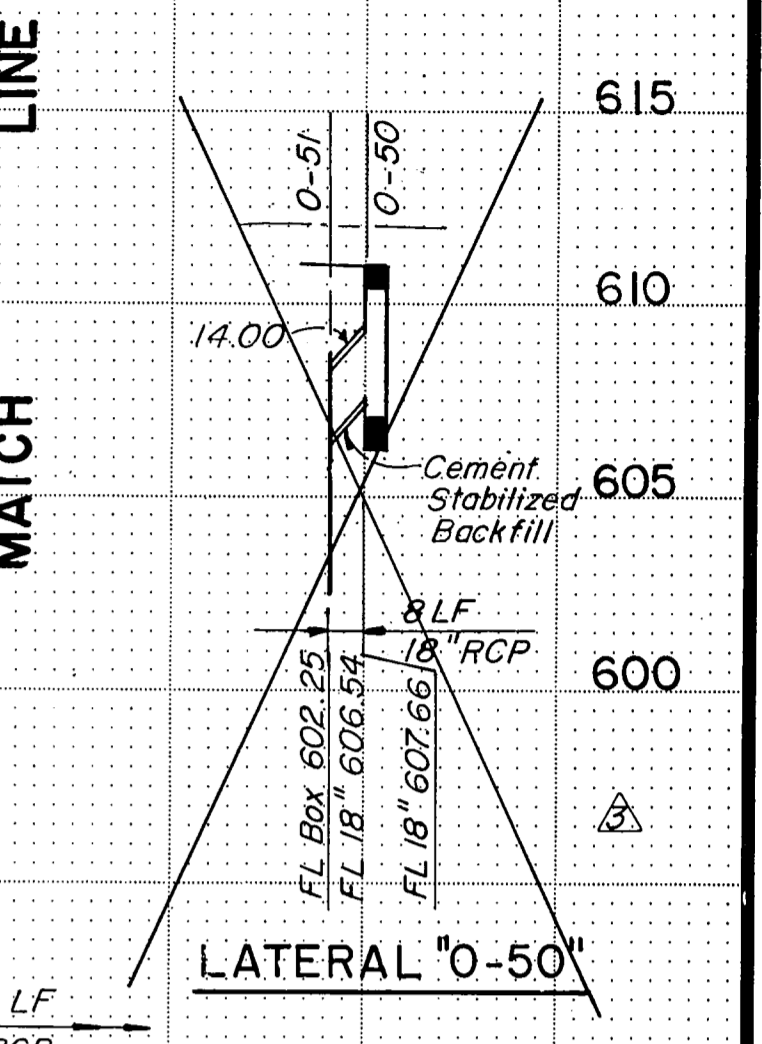
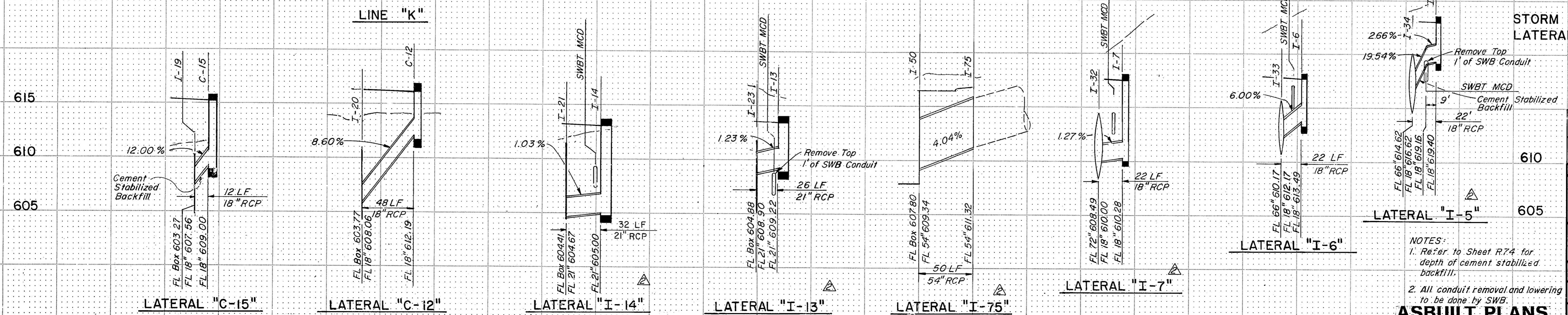
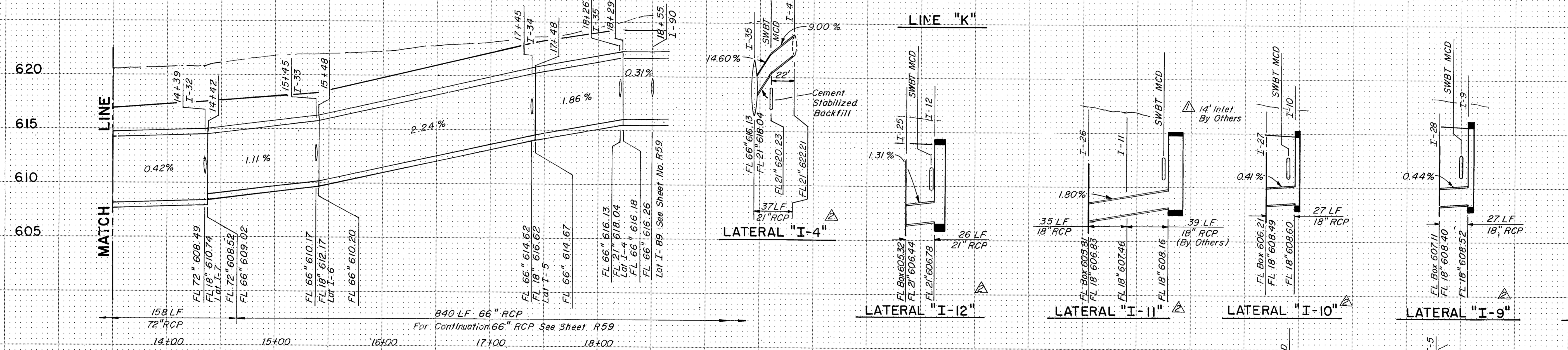
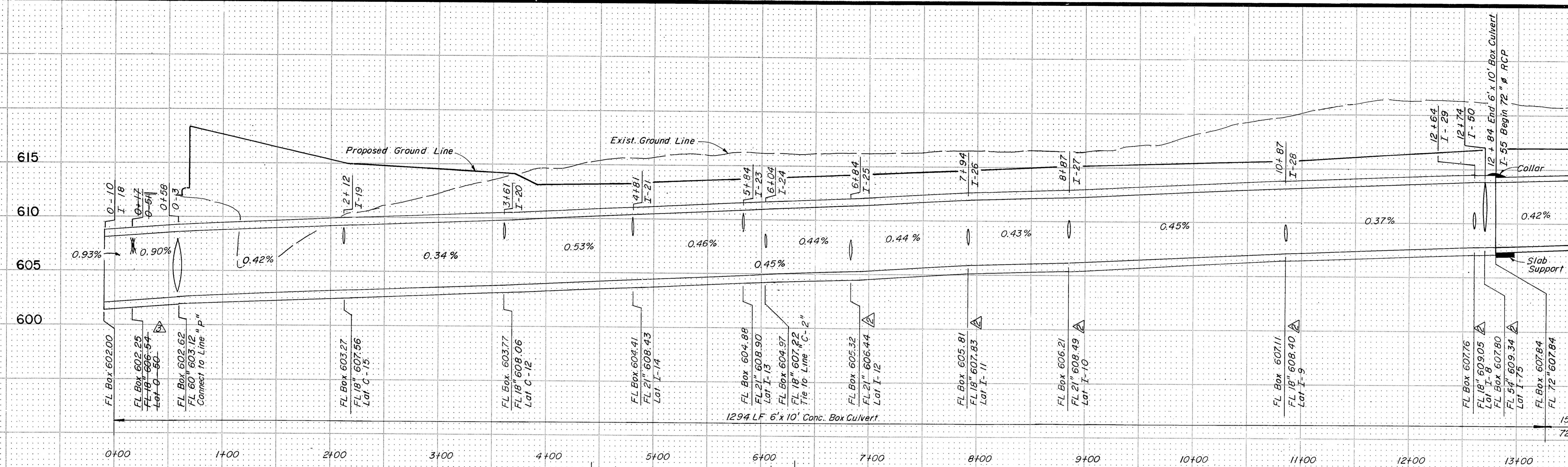


Change Cross-Slope on N. B. Dallas Parkway		MGB	5-16-86
NO.	REVISION	BY	DATE



STORM SEWER LINE: "K"  
 LATERALS: "C-12", "C-15", "I-4", "I-5", "I-6", "I-7", "I-8", "I-9", "I-10", "I-11", "I-12", "I-13", "I-14", "I-75", "O-50", etc.

Revised Due SWB Utility Conflict	MGB	3-14-85
Inlet I-11 Replaced By Inlet By Others	MGB	2-8-85

TEXAS TURNPIKE AUTHORITY  
 DALLAS NORTH TOLLWAY

STORM SEWER PROFILES

**Gibbs & Hill, Inc.**

MADE AELT DATE 12/83 TRACED GWK DATE 12/83  
 CHECKED REW DATE 4/84 SCALE 1"=50'H 1"=5'V

CONTRACT NO. DNT-115 SHEET R58 OF R85

NOTES:  
 1. Refer to Sheet R74 for depth of cement stabilized backfill.  
 2. All conduit removal and lowering to be done by SWB.