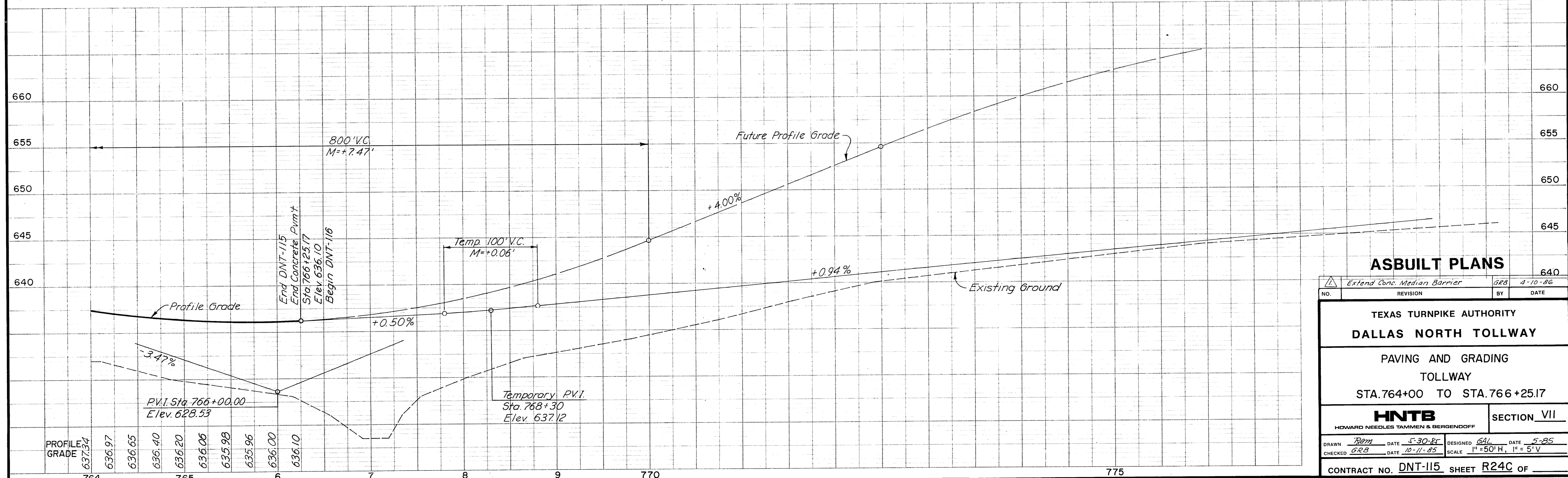


- Notes:
1. See Typical Sections for shoulder and median details.
  2. 6' wide concrete shall extend from Sta. 765+25.17 to Sta. 778+00 for anchorage of the concrete median barrier and terminal section.
  3. Terminal median barrier shall be constructed with a light standard support located at sta. 767+55. See Standard Drawings 31A and 32 for details.

**BENCH MARK # 13**  
 Railroad Spike in West Side of 5th Power Pole (15N 1W 211) In Line, 800' South of Frankford Road, 400' East of Dallas Parkway  
 Elevation: 635.56.



**ASBUILT PLANS**

NO.	REVISION	BY	DATE
1	Extend Conc. Median Barrier	GRB	4-10-86

TEXAS TURNPIKE AUTHORITY  
 DALLAS NORTH TOLLWAY  
 PAVING AND GRADING  
 TOLLWAY  
 STA. 764+00 TO STA. 766+25.17

**HNTB**  
 HOWARD NEEDLES TAMMEN & BERGENDOFF

SECTION VII

DRAWN	DATE	DESIGNED	DATE
GRB	5-30-85	GRB	5-85
CHECKED	DATE	SCALE	
GRB	10-11-85	1" = 50' H, 1" = 5' V	

CONTRACT NO. **DNT-115** SHEET **R24C** OF