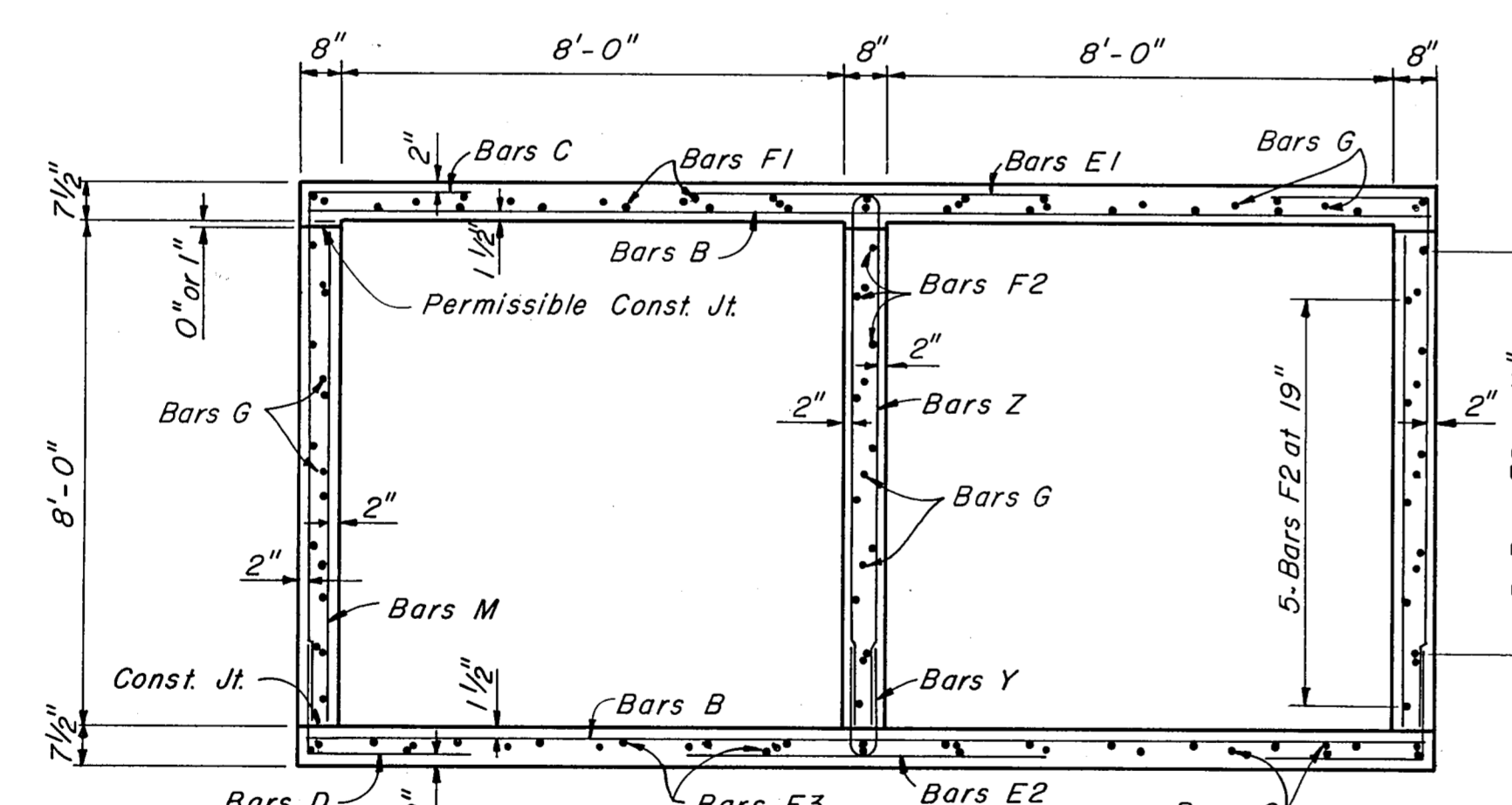
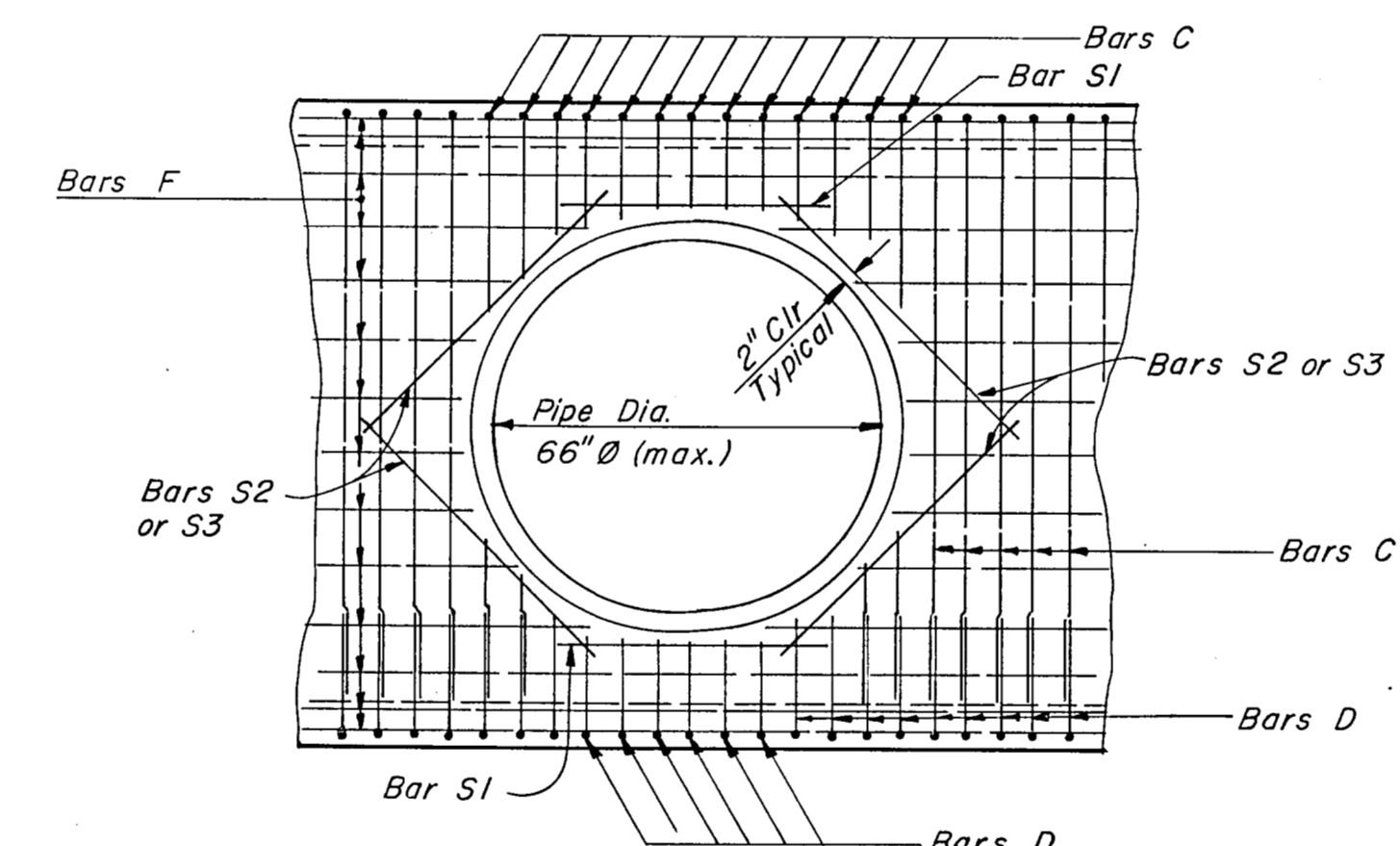


PLAN  
SCALE: 1/4"=1'-0"

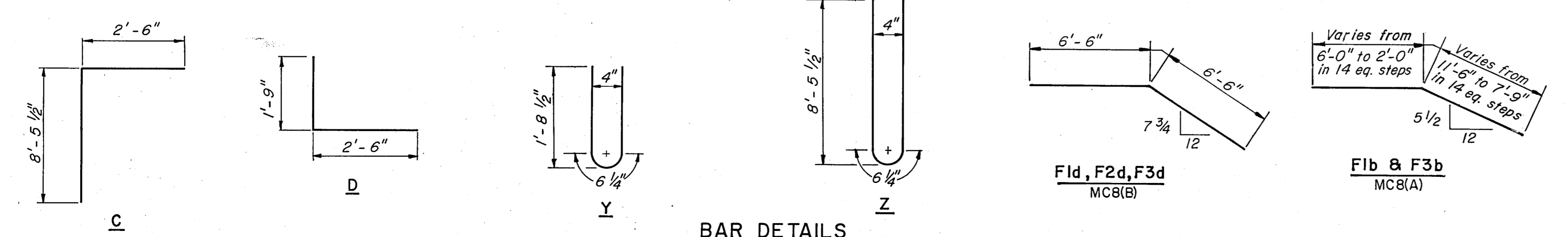


SECTION A-A  
SCALE: 3/8"=1'-0"



NOTES:  
1. Bars shall be cut to provide 2" clearance from outside diameter of pipe.  
2. See Sheet R68 for pipe entrance locations

TYPICAL PIPE ENTRANCE DETAIL  
NOT TO SCALE



BAR DETAILS

SPECIAL MC8(B)							SPECIAL MC8(A)						
BAR	TYPE	SIZE	SPACING	NO.	LENGTH	WEIGHT	BAR	TYPE	SIZE	SPACING	NO.	LENGTH	WEIGHT
B1	Str	#6	6"	266	17'-8"	7060	B1	Str	#6	6"	406	17'-8"	10775
B2	Str	#6	~	4	16'-8"	100	B6	Str	#6	~	6	16'-6"	149
B3	Str	#6	~	4	16'-0"	96	B7	Str	#6	~	8	15'-0"	180
B4	Str	#6	~	4	15'-0"	90	B8	Str	#6	~	12	11'-6"	207
B5	Str	#6	~	24	12'-8"	457	C	Bent	#5	6"	420	10'-11"	4782
C	Bent	#5	6"	284	10'-11"	3234	D	Bent	#5	6"	420	4'-3"	2681
E1	Str	#6	6"	152	5'-8"	1294	E1	Str	#6	6"	211	5'-8"	1797
E2	Str	#6	6"	152	5'-8"	1294	E2	Str	#6	6"	211	5'-8"	1797
F1c	Str	#4	~	21	24'-0"	337	F1a	Str	#4	~	21	94'-3"	1322
F1d	Bent	#4	~	21	13'-0"	182	F1b	Bent	#4	19"	21	13'-8" Avg	192
F1e	Str	#4	~	21	40'-6"	568	F2a	Str	#4	~	30	94'-3"	1889
F2c	Str	#4	~	30	24'-0"	481	F2b	Bent	#4	~	30	13'-8" Avg	274
F2d	Bent	#4	19"	30	13'-0"	261	F3a	Str	#4	~	21	94'-3"	1322
F2e	Str	#4	~	30	40'-6"	812	F3b	Bent	#4	~	21	13'-8" Avg	192
F3c	Str	#4	~	19	24'-0"	305	G	Str	#5	17 1/2"	41	4'-0"	171
F3d	Bent	#4	~	19	13'-0"	165	M	Str	#4	18"	141	7'-11"	746
F3e	Str	#4	~	19	40'-6"	514	Y	Bent	#4	12"	106	3'-7"	254
G	Str	#5	17 1/2"	82	4'-0"	342	Z	Bent	#4	12"	106	17'-1"	1210
M	Str	#4	18"	96	7'-11"	508	S1	Str	#4	~	2	4'-0"	5
Y	Bent	#4	12"	71	3'-7"	170	S2	Str	#4	~	4	4'-9"	13
Z	Bent	#4	12"	71	17'-1"	810	S3	Str	#4	~	4	5'-0"	13
S3	Str	#4	~	8	5'-0"	27							
ITEM NO.	DESCRIPTION	UNIT	QUANTITY	ITEM NO.	DESCRIPTION	UNIT	QUANTITY						
* 421	CLASS C CONCRETE	CY	99.8	* 421	CLASS C CONCRETE	CY	149.4						
* 440	REINFORCING STEEL	LB	20,366	* 440	REINFORCING STEEL	LB	29,971						

\* Quantities are for Contractor's information only.  
□ Bar length includes 1'-1"-6" lap.

**ASBUILT PLANS**

NO.	REVISION	BY	DATE
TEXAS TURNPIKE AUTHORITY <b>DALLAS NORTH TOLLWAY</b>			
SPECIAL BOX CULVERT DETAILS STA 642+50			
<b>Gibbs &amp; Hill, Inc.</b> ENGINEERS DESIGNERS CONSTRUCTORS DALLAS			SECTION VII
DRAWN	VER	DATE	12-19-83
DESIGNED	LSRa	DATE	6-3-83
CHECKED	REF	DATE	12-30-83
SCALE	As Shown		
CONTRACT NO. DNT-115 SHEET R69 OF R85			