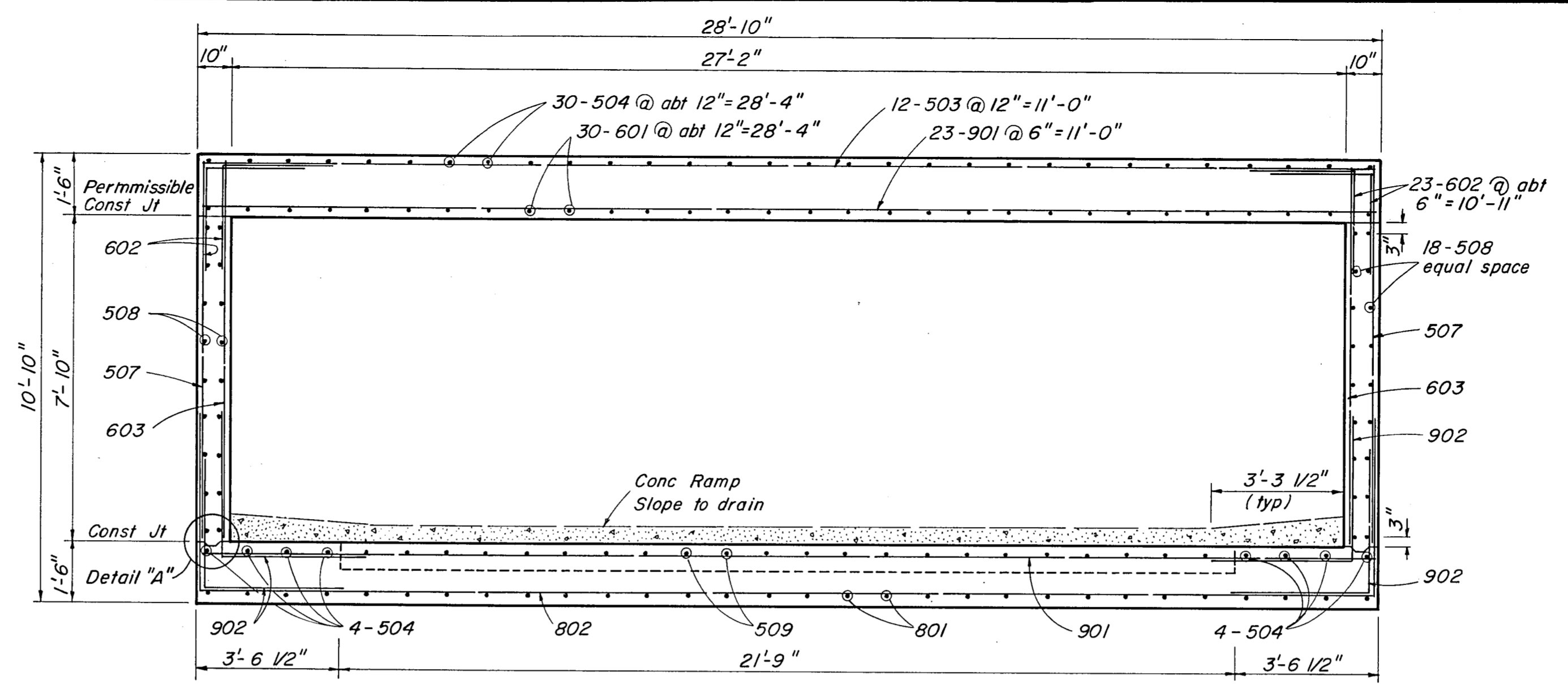
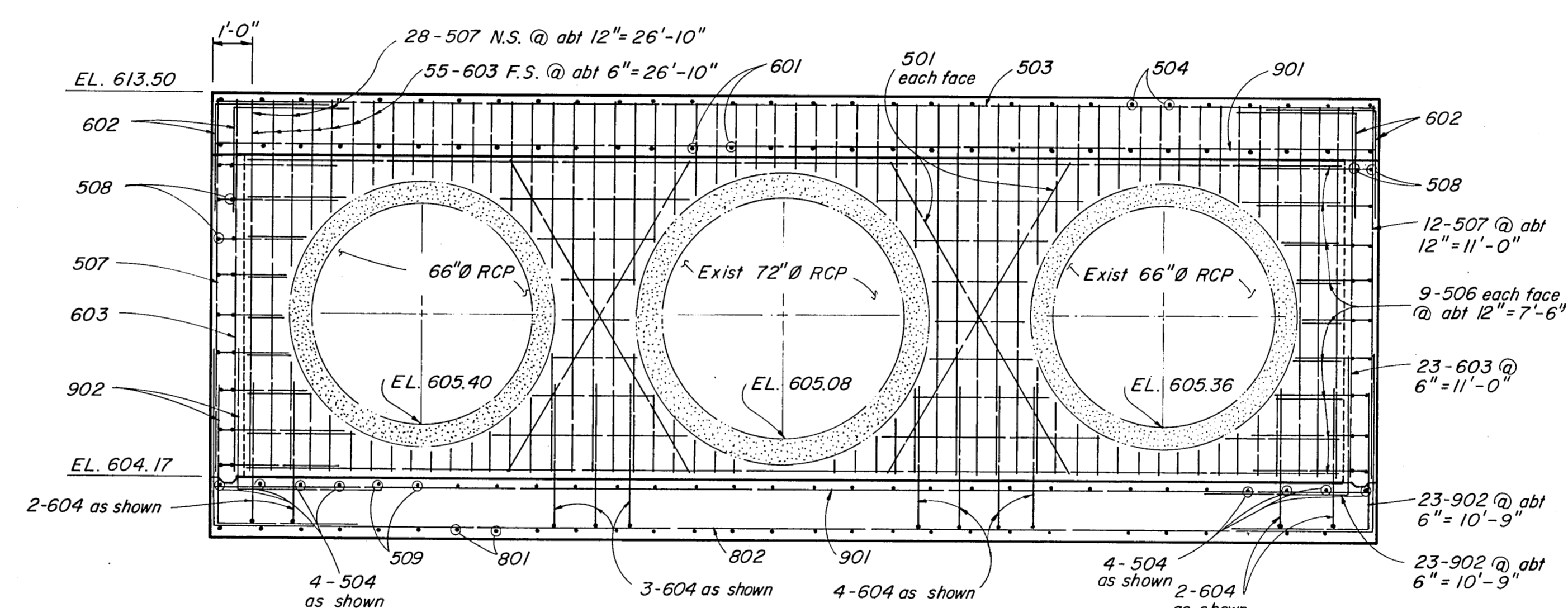


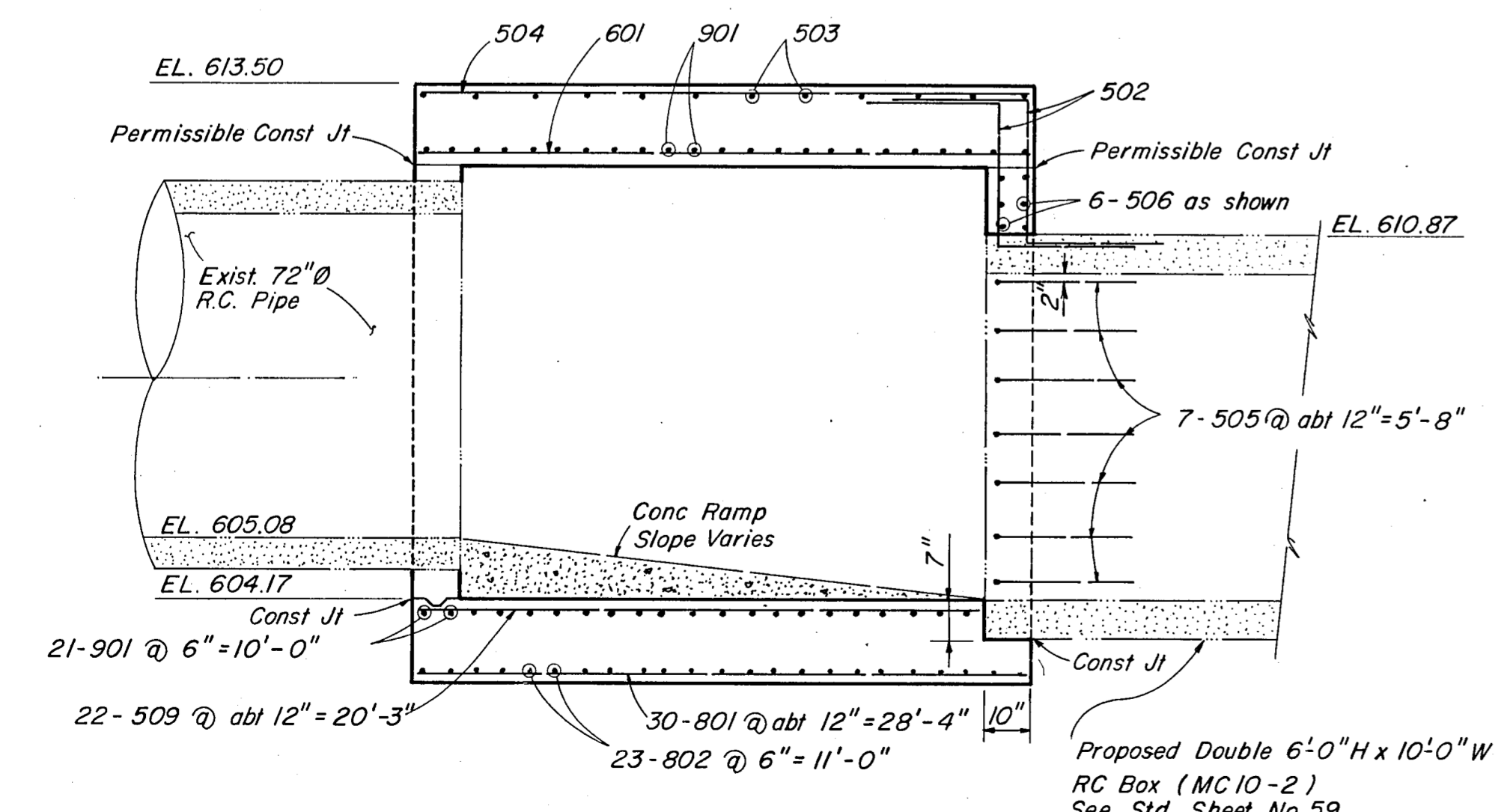
PLAN
SCALE: 3/8"=1'-0"



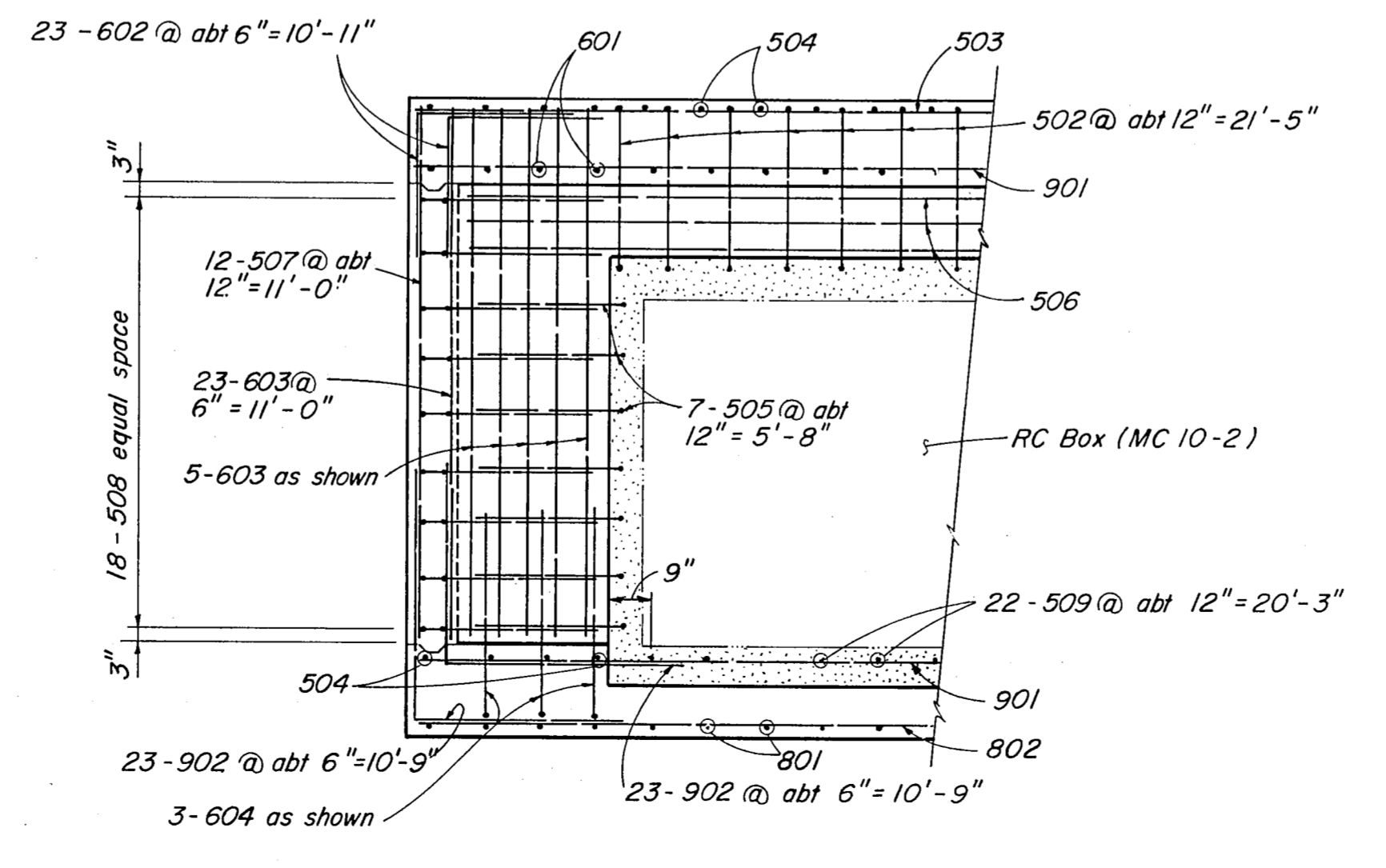
SECTION A-A
SCALE: 3/8"=1'-0"



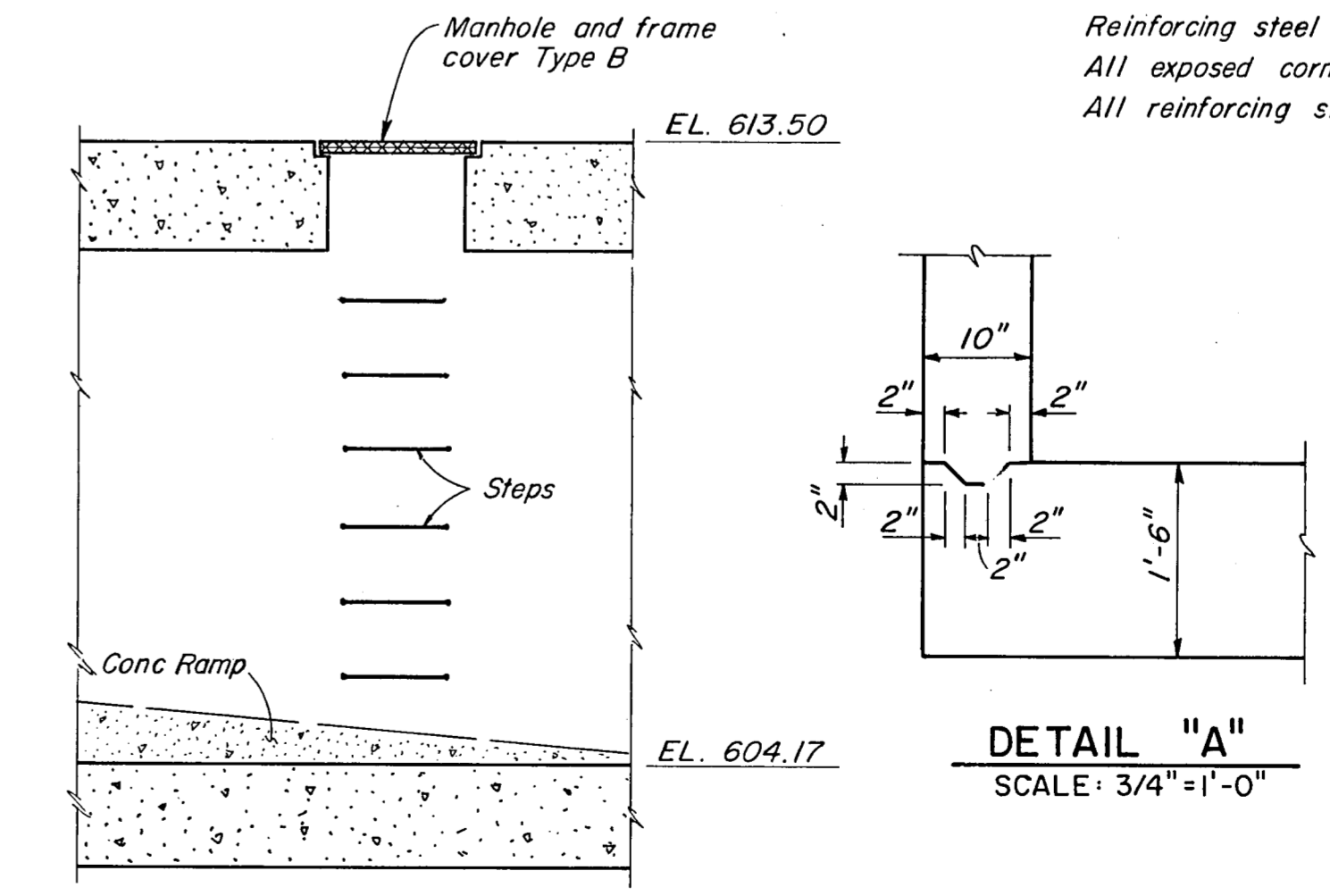
ELEVATION (AT WEST END OF BOX)
SCALE: 3/8"=1'-0"



SECTION B-B
SCALE: 3/8"=1'-0"



SECTION C-C
SCALE: 3/8"=1'-0"

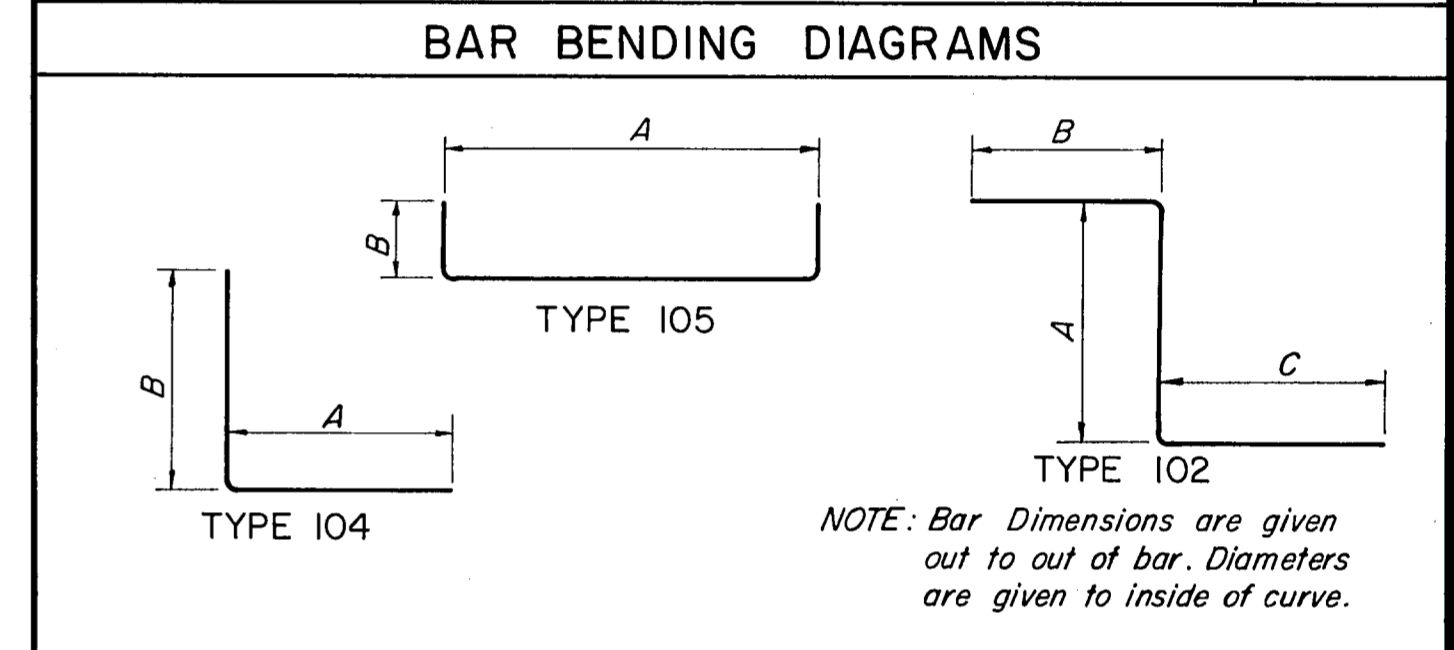


SECTION D-D
SCALE: 3/8"=1'-0"

DETAIL "A"
SCALE: 3/4"=1'-0"

NOTE: Steps for Junction Box shall be placed at intervals of 16 inches as directed by the Engineer in charge and shall conform to Bass and Hayes Foundry, Inc. Standard Manhole Pattern No. 90 or equal.

BILL OF REINFORCING STEEL							
MARK	NO	LENGTH	TYPE	DIMENSIONS			WEIGHT
				A	B	C D or R	
501	8	9'-0"	Str				75
502	23	7'-9"	102	2'-9"	2'-6"	2'-6"	186
503	12	28'-7"	Str				358
504	38	11'-1"	Str				439
505	14	5'-0"	104	2'-6"	2'-6"		73
506	24	26'-11"	Str				674
507	52	9'-1"	Str				493
508	36	13'-6"	105	11'-0"	2'-6"		507
509	22	10'-3"	Str				235
601	30	11'-1"	Str				499
602	46	5'-0"	104	2'-6"	2'-6"		345
603	111	9'-1"	Str				1514
604	17	7'-0"	104	3'-6"	3'-6"		178
801	30	11'-1"	Str				887
802	23	37'-7"	105	28'-7"	4'-6"		2308
901	44	28'-7"	Str				4276
902	92	9'-0"	104	4'-6"	4'-6"		2816
Total Lbs							15,863



ESTIMATED QUANTITY SUMMARY			
ITEM NO.	DESCRIPTION	UNIT	QUANTITY
* 421	Concrete - Class C	CY	46.5
* 440	Reinforcing Steel	Lbs	15,863
* 471	Manhole & Frame Cover - Type B	Ea	1
464	66" Diameter RCP Class III	LF	12

NOTES:
 * Quantities are for Contractor's information only.
 Concrete to be class C.
 Reinforcing steel to conform to ASTM - A 615 Grade 60.
 All exposed corners to be chamfered 3/4".
 All reinforcing steel shall have a minimum cover of 1/2".

ASBULT PLANS

NO.	REVISION	BY	DATE
-----	----------	----	------

**TEXAS TURNPIKE AUTHORITY
DALLAS NORTH TOLLWAY**

**JUNCTION BOX DETAILS
STA 678 + 20**

Gibbs & Hill, Inc.
ENGINEERS DESIGNERS CONSTRUCTORS

SECTION VII

DRAWN <i>ELB</i>	DATE <i>2/14/85</i>	DESIGNED <i>REF</i>	DATE <i>2/1/85</i>
CHECKED <i>MGB</i>	DATE <i>3/4/85</i>	SCALE <i>As Shown</i>	

CONTRACT NO. **DNT-107** SHEET **R 72** OF **R 85**