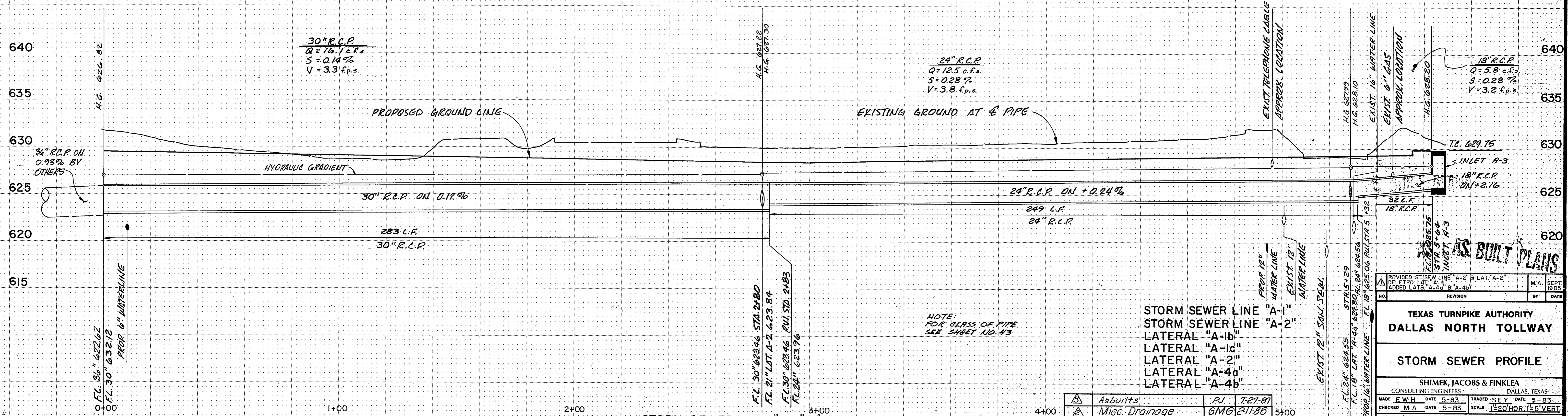


STORM SEWER LINE "A-1" LATERAL "A-1b" LATERAL "A-1c" LATERAL "A-2" LATERAL "A-4a" LATERAL "A-4b"

Note: See sheet R-67A of DNT-115 for connecting pipe



STORM SEWER LINE "A-2"

NOTE: FOR CLASS OF PIPE SEE SHEET NO. 43

STORM SEWER LINE "A-1"
 STORM SEWER LINE "A-2"
 LATERAL "A-1b"
 LATERAL "A-1c"
 LATERAL "A-2"
 LATERAL "A-4a"
 LATERAL "A-4b"

Asbuilts	RJ	7-27-87
Misc. Drainage	GMG	2/11/86
No. Revision	By	Date

REVISIONS

No.	REVISION	BY	DATE
1	REVISED ST. SEW. LINE "A-2" B. LAT. "A-2"		
2	DELETED LATERALS "A-4a" & "A-4b"		
3	ADDED LATERALS "A-4a" & "A-4b"		

MADE E.W.H. DATE 5-83 TRACED S.E.Y. DATE 5-83
 CHECKED M.A. DATE 5-83 SCALE 1"=20' HOR. 1"=5' VERT.

TEXAS TURNPIKE AUTHORITY
 DALLAS NORTH TOLLWAY
 STORM SEWER PROFILE

SHIMEK, JACOBS & FINKLEA
 CONSULTING ENGINEERS DALLAS, TEXAS.

1 OF 16 CONTRACT NO. DNT 116 SHEET 45 OF 96